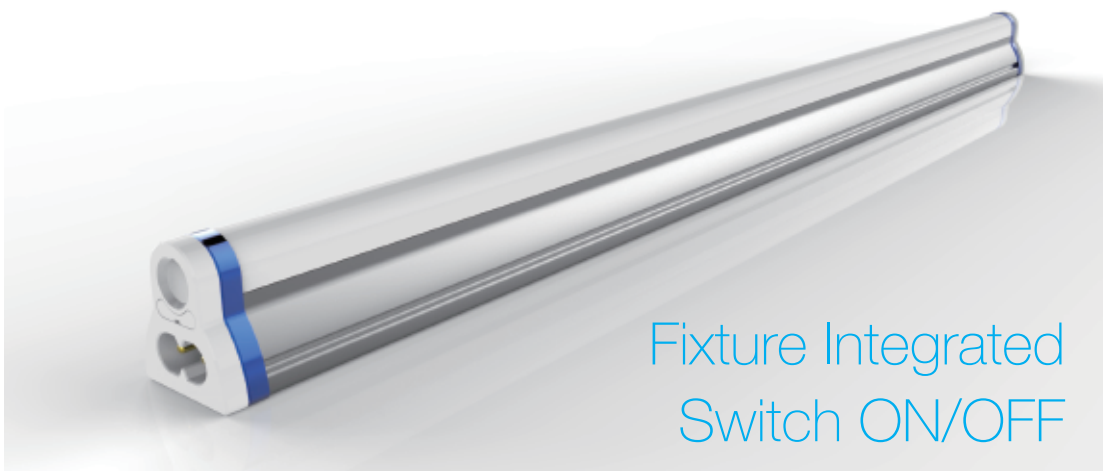




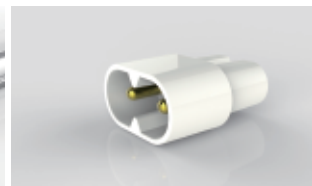
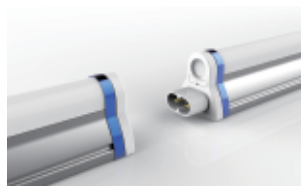
Shenzhen Ruizi Light Electricity Technology Co. Ltd

Fixture Integrated T5 LED TUBE SPEC

T5-AE



Fixture Integrated
Switch ON/OFF





■ Matters needing attention

- Before installing the lighting fixtures, please read this instruction manual carefully.
- The lighting fixtures should be installed, connected and tested by a certified installer based on the local regulations.
- Lamps should always be installed or replaced with care.
- Please check local voltage in accordance with the product requirements before using the product.
- Relamping only can be done when the power is off and the lamp is completely cooled down.
- When a lamp is to be cleaned, make the power off and let it cool down completely. Clean the fixture with a soft cloth and a standard PH neutral detergent. Stainless steel finishing should be maintained regularly.
- Misuse of, or changes to the fixture shall nullify the guarantee.
- Don't cover the fixtures with flammable materials.
- Exclusively replaced by the manufacturer or his service agent or the similar qualified person in order to avoid a hazard.

■ S/N Rules

S/N:ABCDEFX

1 2 3 4 5 6

EX:T5-AEK09301100000X

1 2 3 4 5 6

- 1 Model
- 2 PC Lens : K=Frosted T=Clear
- 3 Power : 9=9W 11=11W 15=15W 18=18W 22=22W 24=24W
- 4 Color Range : 30=WW(3000K) 40=NW(4000K) 50=DW(5000K)
65=CW(6500K)
- 5 Date : 11=2011 Year 03=March
- 6 Quantity : 00001-99999PCS

■ Temperature Characteristics T-ambient 25°C

Temperature

Operating -20~+40 °C
Storage -40~+85 °C

Humidity

Operating 10%-80%
Storage 10%-80%

■ Electrical Characteristics

Input Voltage: AC100~277V 50/60Hz
PF: ≥0.93 THD<20%
Power Efficiency: ≥0.87



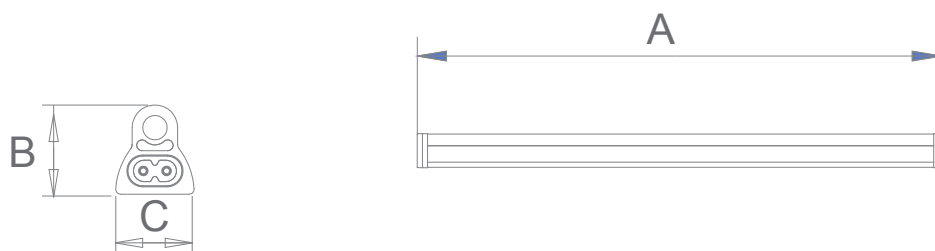
1. Features

- T5 fixture with driver integrated
- Fixture/batten integrated T5 LED tube can greatly save labor cost
- Quick installation and easy maintenance
- Aluminum PCB better heat dissipation than FR4
- Maximum efficacy and minimum glare
- High-tech optical design
- Isolating driver inside

2. Application

COMMERCIAL LIGHTING	PUBLIC LIGHTING	INDUSTRIAL LIGHTING
Office	Residence	Factory
Supermarket	Library	Warehouse
Hotel	Hospitals	etc
Exhibition hall	School	
etc	MTR station	
	Bus station	
	Airport	

3. Product Dimension



Model NO.	Size A(mm)	Size B(mm)	Size C(mm)
T5-AE/600mm	565	33	29
T5-AE/900mm	869	33	29
T5-AE/1200mm	1174	33	29
T5-AE/1500mm	1475	33	29



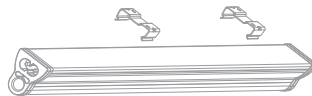
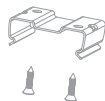
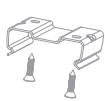
4. Optical Characteristics

Model NO.	power (w)	High efficiency		Standard efficiency		CRI	Beam Angle
		Lumens	Lm/W	Lumens	Lm/W		
T5-AE/600mm	11	1650	150	1430	130	>80	120°
T5-AE/900mm	17	2250	150	2210	130	>80	120°
T5-AE/1200mm	20	3000	150	2600	130	>80	120°
T5-AE/1500mm	24	3600	150	3120	130	>80	120°
T5-AE /1500mm	30	4500	150	3900	130	>80	120°

Note:

CCT Range WW(3000K) NW(4000K) DW(5000K) CW(6500K)
 Frosted cover is 10lm/w less than clear cover

5. Installation



1. Fix the clips according to tube length

2. Push tube into the clips

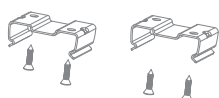
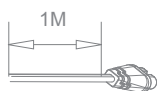
3. Connect power wire

■ The maximum number of series for linkable

Input Voltage	T5 Length(mm)	Max Qty
100VAC	600	10
100VAC	900	8
100VAC	1200	7
100VAC	1500	6

Input Voltage	T5 Length(mm)	Max Qty
230VAC	600	20
230VAC	900	16
230VAC	1200	14
230VAC	1500	12

■



Clip , Screw

Power Cable

Standard Accessories



Switch



Linkable cable

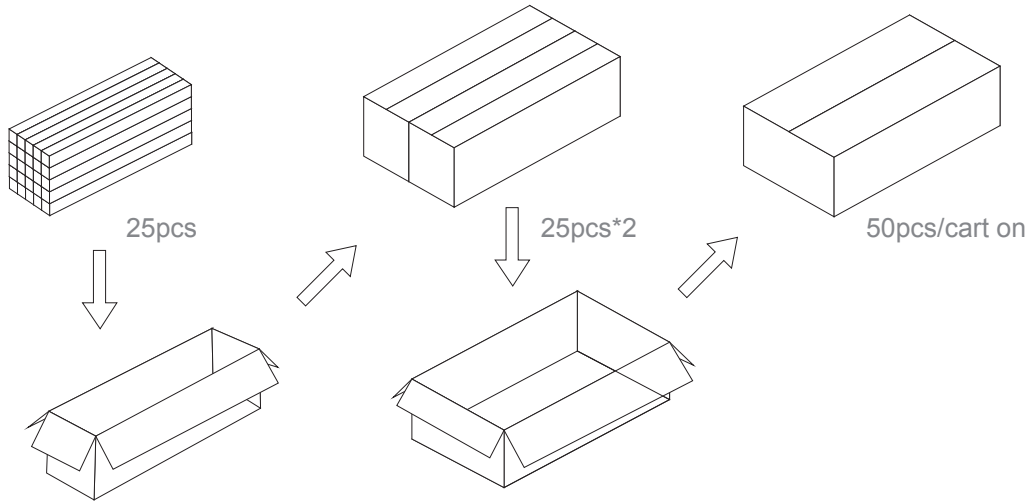


quickly connector

Optional Accessories



6.Packaging



Length	Type	Singal Box	Pcs/ctn	N.W.	G.W./ctn(kg)	Meas(cm)
600mm	TUBE	1	50	260	19.6	73*47*27
900mm	TUBE	1	50	292	22.7	103*47*27
1200mm	TUBE	1	50	390	29.7	133*47*27
1500mm	TUBE	1	50	454	35	163*47*27

7.Attention

This specification is for reference only,we reserve the right to change without notice.If you need the updated info,please contact local distributors or visit our website at <http://www.ervan.cn>