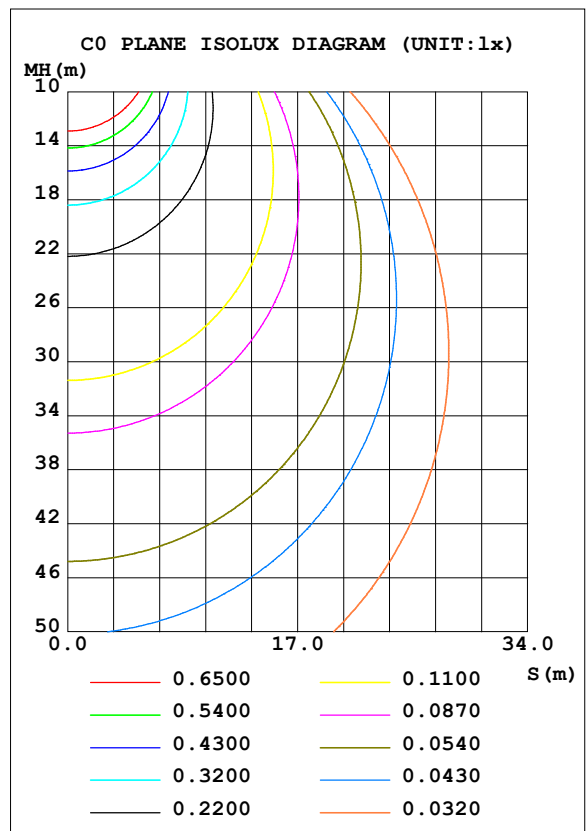
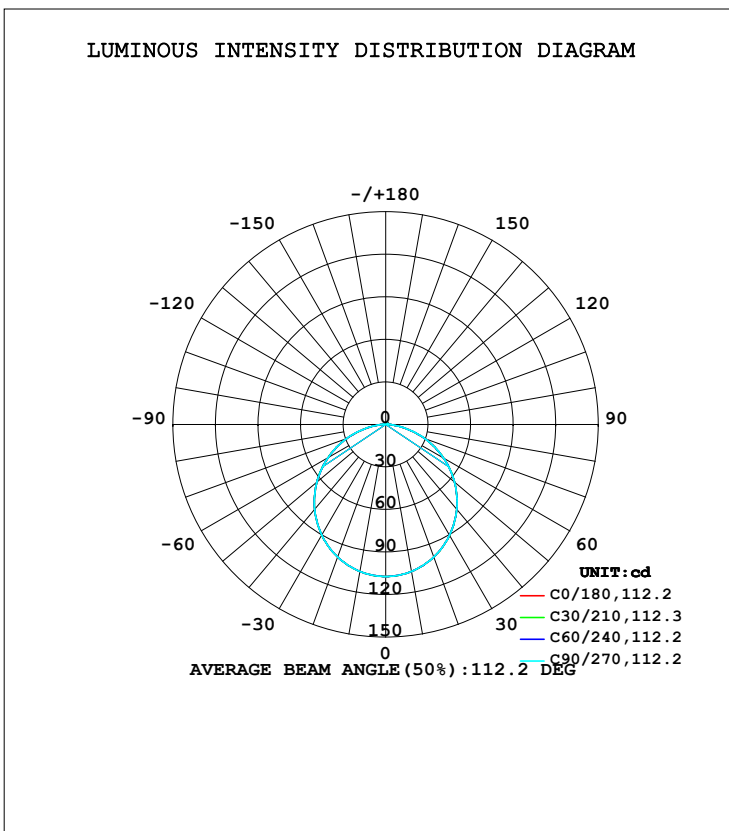


LUMINAIRE PHOTOMETRIC TEST REPORT

Test:U:0V I:0A P:0W PF:0 Freq:0Hz Lamp Flux:314.145x1 lm		
NAME: E02-3W-4000K	TYPE:	WEIGHT:
SPEC.:	DIM.:	SERIAL No.:
MFR.: ERVAN	SUR.:	Shielding Angle:

DATA OF LAMP		PHOTOMETRIC DATA			
MODEL		I _{max} (cd)	107.3	S/MH (C0/180)	1.25
NOMINAL POWER (W)	3	LOR (%)	100.0	S/MH (C90/270)	1.25
RATED VOLTAGE (V)	230	TOTAL FLUX (lm)	314.14	η UP, DN (C0-180)	1.2, 48.8
NOMINAL FLUX (lm)	314.145	CIE CLASS	DIRECT	η UP, DN (C180-360)	1.2, 48.8
LAMPS INSIDE	1	η up (%)	2.4	CIBSE SHR NOM	1.25
TEST VOLTAGE (V)	230	η down (%)	97.6	CIBSE SHR MAX	1.35



C Range: 0 - 360DEG
 C Interval: 15.0DEG
 Test Speed: HIGH
 Temperature: 25.3DEG
 Operators: QC
 Test Date: 2021-03-04

γ Range: 0 - 180DEG
 γ Interval: 1.0DEG
 Test System: EVERFINE GO-2000A_V1 SYSTEM V2.0.362
 Humidity: 53.0%
 Test Distance: 10.530m [K=1.0000]
 Remarks:

ZONAL FLUX DIAGRAM

ZONAL FLUX DIAGRAM:

γ	C0	C45	C90	C135	C180	C225	C270	C315	γ	Φ zone	Φ total	%lum, lamp
10	105.3	105.3	105.3	105.3	105.3	105.3	105.3	105.3	0- 10	10.15	10.15	3.23,3.23
20	99.49	99.49	99.47	99.49	99.49	99.49	99.47	99.49	10- 20	29.03	39.18	12.5,12.5
30	90.22	90.25	90.21	90.25	90.22	90.25	90.21	90.25	20- 30	43.91	83.08	26.4,26.4
40	78.05	78.06	78.02	78.06	78.05	78.06	78.02	78.06	30- 40	52.85	135.9	43.3,43.3
50	63.48	63.51	63.47	63.51	63.48	63.51	63.47	63.51	40- 50	54.80	190.7	60.7,60.7
60	47.06	47.10	47.10	47.10	47.06	47.10	47.10	47.10	50- 60	49.60	240.3	76.5,76.5
70	29.41	29.44	29.48	29.44	29.41	29.44	29.48	29.44	60- 70	37.95	278.3	88.6,88.6
80	12.13	12.15	12.22	12.15	12.13	12.15	12.22	12.15	70- 80	21.75	300.0	95.5,95.5
90	2.149	2.105	2.196	2.105	2.149	2.105	2.196	2.105	80- 90	6.606	306.6	97.6,97.6
100	1.250	1.212	1.173	1.212	1.250	1.212	1.173	1.212	90-100	1.627	308.3	98.1,98.1
110	1.218	1.151	0.9924	1.151	1.218	1.151	0.9924	1.151	100-110	1.224	309.5	98.5,98.5
120	1.239	1.079	1.007	1.079	1.239	1.079	1.007	1.079	110-120	1.095	310.6	98.9,98.9
130	1.228	1.155	1.101	1.155	1.228	1.155	1.101	1.155	120-130	1.008	311.6	99.2,99.2
140	1.214	1.164	1.119	1.164	1.214	1.164	1.119	1.164	130-140	0.8957	312.5	99.5,99.5
150	1.193	1.140	1.123	1.140	1.193	1.140	1.123	1.140	140-150	0.7292	313.2	99.7,99.7
160	1.132	1.119	1.087	1.119	1.132	1.119	1.087	1.119	150-160	0.5305	313.7	99.9,99.9
170	1.006	1.016	0.9998	1.016	1.006	1.016	0.9998	1.016	160-170	0.3090	314.0	100,100
180	1.021	1.028	1.029	1.028	1.021	1.028	1.029	1.028	170-180	0.0965	314.1	100,100
DEG	LUMINOUS INTENSITY:cd									UNIT:lm		

Conical surface Flux(90deg): 163.54 lm

%lum = 52.1%
%lamp = 52.1%

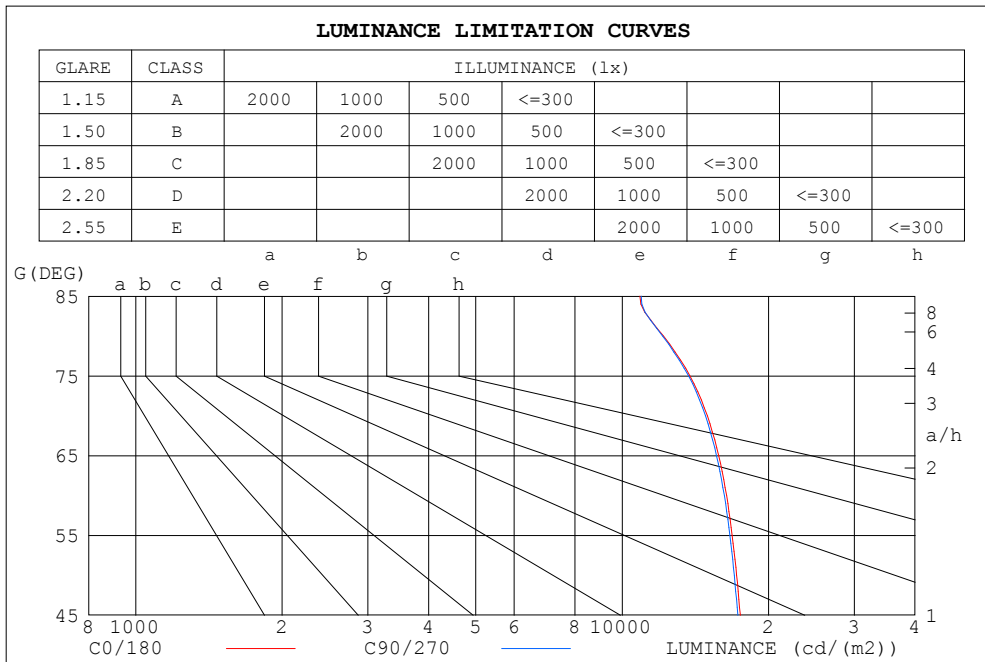
Conical surface Flux(120deg): 240.32 lm

%lum = 76.5%
%lamp = 76.5%

C Range: 0 - 360DEG
C Interval: 15.0DEG
Test Speed: HIGH
Temperature:25.3DEG
Operators:QC
Test Date:2021-03-04

γ Range: 0 - 180DEG
γ Interval: 1.0DEG
Test System:EVERFINE GO-2000A_V1 SYSTEM V2.0.362
Humidity:53.0%
Test Distance:10.530m [K=1.0000]
Remarks:

LUMINANCE LIMITATION CURVES



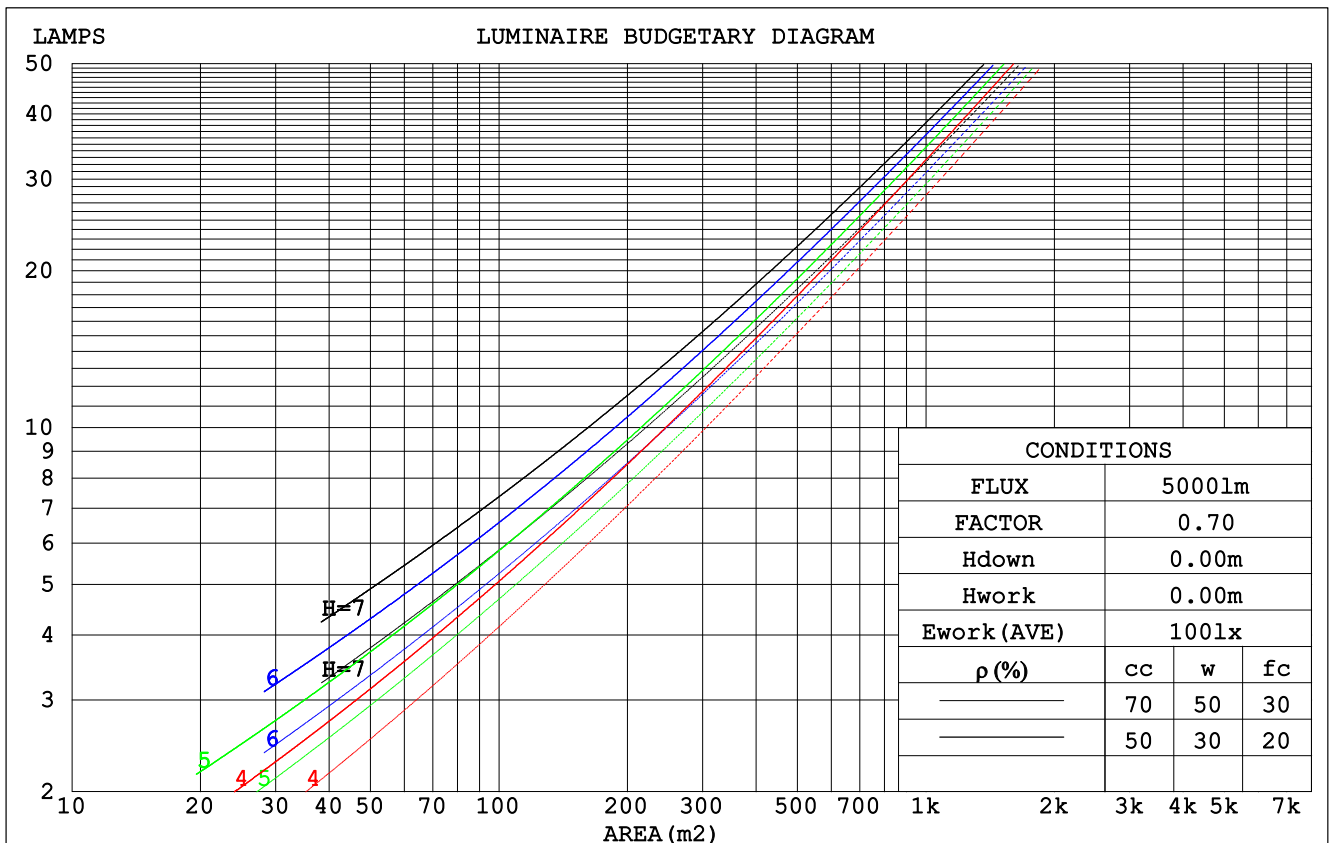
LUMINANCE cd/(m2)		
G (DEG)	C0/180	C90/270
85	10872	10951
80	12160	12111
75	13786	13690
70	14971	14838
65	15789	15628
60	16388	16215
55	16836	16655
50	17194	16998
45	17490	17292

C Range: 0 - 360DEG
 C Interval: 15.0DEG
 Test Speed: HIGH
 Temperature: 25.3DEG
 Operators: QC
 Test Date: 2021-03-04

γ Range: 0 - 180DEG
 γ Interval: 1.0DEG
 Test System: EVERFINE GO-2000A_V1 SYSTEM V2.0.362
 Humidity: 53.0%
 Test Distance: 10.530m [K=1.0000]
 Remarks:

CU AND LUMINAIRE BUDGETARY ESTIMATE DIAGRAM

ρ_{cc}	80%			70%			50%			30%			10%			0
ρ_w	50%	30%	10%	50%	30%	10%	50%	30%	10%	50%	30%	10%	50%	30%	10%	0
ρ_{fc}	20%			20%			20%			20%			20%			0
RCR	RCR:Room Cavity Ratio						Coefficients of Utilization(CU)									
0.0	1.18	1.18	1.18	1.15	1.15	1.15	1.10	1.10	1.10	1.05	1.05	1.05	.00	.00	.00	.98
1.0	1.03	.99	.95	1.01	.97	.93	.96	.93	.90	.92	.89	.87	.88	.86	.84	.81
2.0	.90	.83	.77	.88	.81	.76	.84	.78	.74	.80	.76	.72	.77	.73	.70	.68
3.0	.79	.71	.64	.77	.69	.63	.74	.67	.62	.71	.65	.60	.68	.63	.59	.57
4.0	.70	.61	.54	.68	.60	.54	.65	.58	.53	.63	.57	.52	.60	.55	.51	.48
5.0	.62	.53	.47	.61	.52	.46	.59	.51	.45	.56	.50	.45	.54	.49	.44	.42
6.0	.56	.47	.41	.55	.46	.40	.53	.45	.40	.51	.44	.39	.49	.43	.39	.37
7.0	.51	.42	.36	.50	.41	.36	.48	.41	.35	.46	.40	.35	.45	.39	.34	.32
8.0	.46	.38	.32	.45	.37	.32	.44	.37	.31	.43	.36	.31	.41	.35	.31	.29
9.0	.42	.34	.29	.42	.34	.29	.40	.33	.28	.39	.33	.28	.38	.32	.28	.26
10.0	.39	.31	.26	.39	.31	.26	.37	.30	.26	.36	.30	.25	.35	.29	.25	.23



C Range: 0 - 360DEG
 C Interval: 15.0DEG
 Test Speed: HIGH
 Temperature:25.3DEG
 Operators:QC
 Test Date:2021-03-04

γ Range: 0 - 180DEG
 γ Interval: 1.0DEG
 Test System:EVERFINE GO-2000A_V1 SYSTEM V2.0.362
 Humidity:53.0%
 Test Distance:10.530m [K=1.0000]
 Remarks:

WEC AND CCEC

pcc	80%			70%			50%			30%			10%			0
pw	50%	30%	10%	50%	30%	10%	50%	30%	10%	50%	30%	10%	50%	30%	10%	0
pfc	20%			20%			20%			20%			20%			0
RCR	RCR:Room Cavity Ratio						Wall Exitance Coefficients(WEC)									
0.0																
1.0	.312	.177	.056	.304	.173	.055	.289	.166	.053	.276	.159	.051	.264	.153	.049	
2.0	.292	.160	.049	.285	.157	.048	.272	.151	.047	.260	.146	.046	.249	.141	.044	
3.0	.270	.144	.043	.264	.141	.043	.252	.137	.042	.242	.132	.041	.232	.128	.040	
4.0	.249	.129	.038	.244	.127	.038	.233	.124	.037	.224	.120	.036	.215	.117	.036	
5.0	.230	.117	.034	.225	.116	.034	.216	.112	.033	.208	.109	.033	.200	.107	.032	
6.0	.213	.107	.031	.209	.106	.030	.201	.103	.030	.193	.100	.029	.186	.098	.029	
7.0	.198	.098	.028	.195	.097	.028	.187	.095	.027	.180	.092	.027	.174	.090	.027	
8.0	.185	.091	.025	.182	.090	.025	.175	.088	.025	.169	.086	.025	.163	.084	.024	
9.0	.174	.084	.023	.170	.083	.023	.164	.081	.023	.159	.080	.023	.153	.078	.023	
10.0	.163	.078	.022	.160	.077	.022	.155	.076	.021	.150	.074	.021	.145	.073	.021	

pcc	80%			70%			50%			30%			10%			0
pw	50%	30%	10%	50%	30%	10%	50%	30%	10%	50%	30%	10%	50%	30%	10%	0
pfc	20%			20%			20%			20%			20%			0
RCR	RCR:Room Cavity Ratio						Ceiling Cavity Exitance Coefficients(CCEC)									
0.0	.209	.209	.209	.178	.178	.178	.122	.122	.122	.070	.070	.070	.022	.022	.022	
1.0	.199	.174	.153	.170	.150	.131	.116	.103	.091	.067	.060	.053	.021	.019	.017	
2.0	.191	.150	.116	.163	.129	.101	.112	.090	.070	.065	.052	.041	.021	.017	.013	
3.0	.183	.133	.093	.157	.115	.081	.108	.080	.056	.062	.047	.033	.020	.015	.011	
4.0	.175	.120	.077	.151	.103	.067	.104	.072	.047	.060	.042	.028	.019	.014	.009	
5.0	.168	.109	.066	.144	.095	.057	.099	.066	.041	.058	.039	.024	.019	.013	.008	
6.0	.161	.101	.058	.138	.087	.051	.095	.061	.036	.055	.036	.021	.018	.012	.007	
7.0	.154	.094	.052	.133	.082	.045	.092	.057	.032	.053	.034	.019	.017	.011	.006	
8.0	.148	.088	.048	.127	.077	.042	.088	.054	.029	.051	.032	.018	.017	.010	.006	
9.0	.142	.083	.044	.122	.072	.039	.085	.051	.027	.049	.030	.016	.016	.010	.005	
10.0	.136	.079	.041	.117	.069	.036	.081	.048	.026	.047	.029	.015	.015	.009	.005	

C Range: 0 - 360DEG
 C Interval: 15.0DEG
 Test Speed: HIGH
 Temperature:25.3DEG
 Operators:QC
 Test Date:2021-03-04

γ Range: 0 - 180DEG
 γ Interval: 1.0DEG
 Test System:EVERFINE GO-2000A_V1 SYSTEM V2.0.362
 Humidity:53.0%
 Test Distance:10.530m [K=1.0000]
 Remarks:

UGR(Unified Glare Rating) Table

ceiling/cavity	0.7	0.7	0.5	0.5	0.3	0.7	0.7	0.5	0.5	0.3
walls	0.5	0.3	0.5	0.3	0.3	0.5	0.3	0.5	0.3	0.3
working plane	0.2	0.2	0.2	0.2	0.2	0.2	0.2	0.2	0.2	0.2
Room dimensions	Viewed crosswise					Viewed endwise				
x = 2H y = 2H	26.6	28.0	26.9	28.3	28.5	26.5	28.0	26.8	28.3	28.5
3H	28.1	29.5	28.4	29.7	30.0	28.1	29.4	28.4	29.7	30.0
4H	28.7	30.0	29.0	30.3	30.6	28.7	30.0	29.0	30.3	30.6
6H	29.1	30.3	29.5	30.6	31.0	29.1	30.3	29.4	30.6	31.0
8H	29.2	30.4	29.6	30.7	31.1	29.2	30.4	29.6	30.7	31.1
12H	29.3	30.4	29.7	30.8	31.1	29.3	30.4	29.7	30.8	31.1
4H 2H	27.2	28.5	27.5	28.8	29.1	27.1	28.4	27.5	28.7	29.1
3H	28.9	30.0	29.3	30.3	30.7	28.8	30.0	29.2	30.3	30.7
4H	29.6	30.6	30.0	31.0	31.4	29.6	30.6	30.0	31.0	31.4
6H	30.1	31.0	30.6	31.4	31.9	30.1	31.0	30.5	31.4	31.8
8H	30.3	31.2	30.7	31.6	32.0	30.3	31.1	30.7	31.6	32.0
12H	30.4	31.2	30.9	31.6	32.1	30.4	31.2	30.9	31.6	32.1
8H 4H	29.8	30.7	30.3	31.1	31.5	29.8	30.7	30.3	31.1	31.5
6H	30.5	31.2	31.0	31.7	32.2	30.5	31.2	31.0	31.7	32.1
8H	30.8	31.4	31.3	31.9	32.4	30.8	31.4	31.3	31.9	32.4
12H	31.0	31.5	31.5	32.0	32.5	31.0	31.5	31.5	32.0	32.5
12H 4H	29.8	30.6	30.3	31.1	31.5	29.8	30.6	30.3	31.0	31.5
6H	30.6	31.2	31.1	31.7	32.2	30.6	31.2	31.1	31.7	32.2
8H	30.9	31.4	31.4	31.9	32.4	30.9	31.4	31.4	31.9	32.4
Variations with the observer position at spacings:										
S = 1.0H	+ 0.1 / - 0.2					+ 0.2 / - 0.2				
1.5H	+ 0.2 / - 0.3					+ 0.2 / - 0.3				
2.0H	+ 0.2 / - 0.3					+ 0.2 / - 0.3				

CIE Pub.117, 314.1 lm Total Lamp Luminous Flux Correct (8log(F/F0) = -4.0)

C Range: 0 - 360DEG
 C Interval: 15.0DEG
 Test Speed: HIGH
 Temperature:25.3DEG
 Operators:QC
 Test Date:2021-03-04

γ Range: 0 - 180DEG
 γ Interval: 1.0DEG
 Test System:EVERFINE GO-2000A_V1 SYSTEM V2.0.362
 Humidity:53.0%
 Test Distance:10.530m [K=1.0000]
 Remarks:

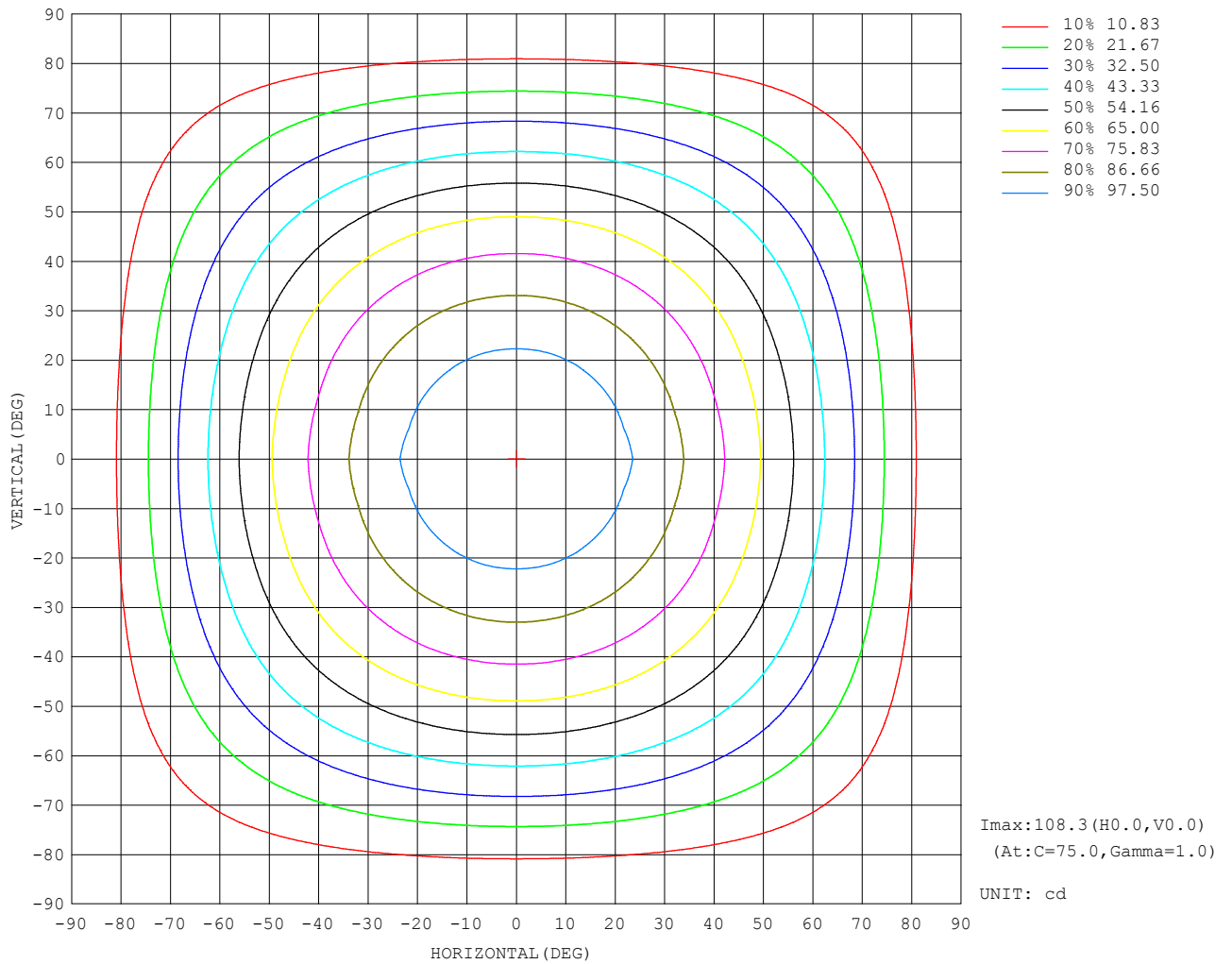
UTILIZATION FACTORS TABLE

REFLECTANCE										
Ceiling	0.8	0.8	0.8	0.7	0.7	0.7	0.5	0.5	0.5	0
Walls	0.7	0.5	0.3	0.7	0.5	0.3	0.7	0.5	0.3	0
Working plane	0.2	0.2	0.2	0.2	0.2	0.2	0.2	0.2	0.2	0
ROOM INDEX	UTILIZATION FACTORS (PERCENT) $k(RI) \times RCR = 5$									
$k = 0.60$	57	45	38	56	45	38	55	44	38	31
0.80	67	55	48	66	54	47	64	54	47	40
1.00	75	64	56	74	63	56	71	64	55	48
1.25	82	71	64	81	71	64	78	69	63	55
1.50	87	77	70	85	76	69	82	74	68	60
2.00	94	85	79	92	84	78	88	81	76	68
2.50	98	90	84	96	88	83	92	86	81	72
3.00	101	94	89	99	93	87	95	89	85	76
4.00	105	100	95	103	98	93	98	94	90	81
5.00	108	103	99	105	101	97	100	97	94	84
ROOM INDEX	UF (total)									Direct
According to DIN EN 13032-2 2004			Suspended				SHRNOM = 1.25			

C Range: 0 - 360DEG
 C Interval: 15.0DEG
 Test Speed: HIGH
 Temperature: 25.3DEG
 Operators: QC
 Test Date: 2021-03-04

γ Range: 0 - 180DEG
 γ Interval: 1.0DEG
 Test System: EVERFINE GO-2000A_V1 SYSTEM V2.0.362
 Humidity: 53.0%
 Test Distance: 10.530m [K=1.0000]
 Remarks:

ISOCANDELA DIAGRAM

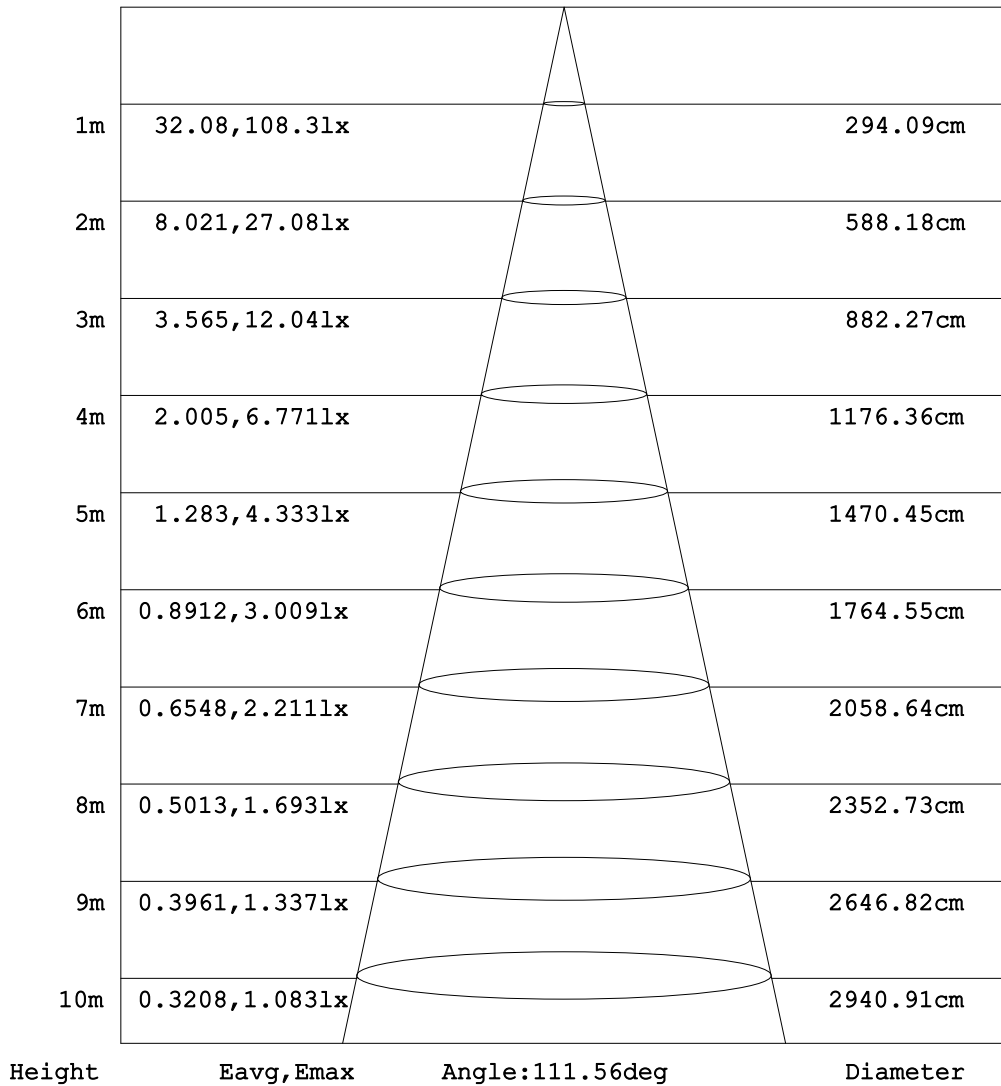


C Range: 0 - 360DEG
 C Interval: 15.0DEG
 Test Speed: HIGH
 Temperature: 25.3DEG
 Operators: QC
 Test Date: 2021-03-04

γ Range: 0 - 180DEG
 γ Interval: 1.0DEG
 Test System: EVERFINE GO-2000A_V1 SYSTEM V2.0.362
 Humidity: 53.0%
 Test Distance: 10.530m [K=1.0000]
 Remarks:

AAI Figure

Flux out:221.5 lm

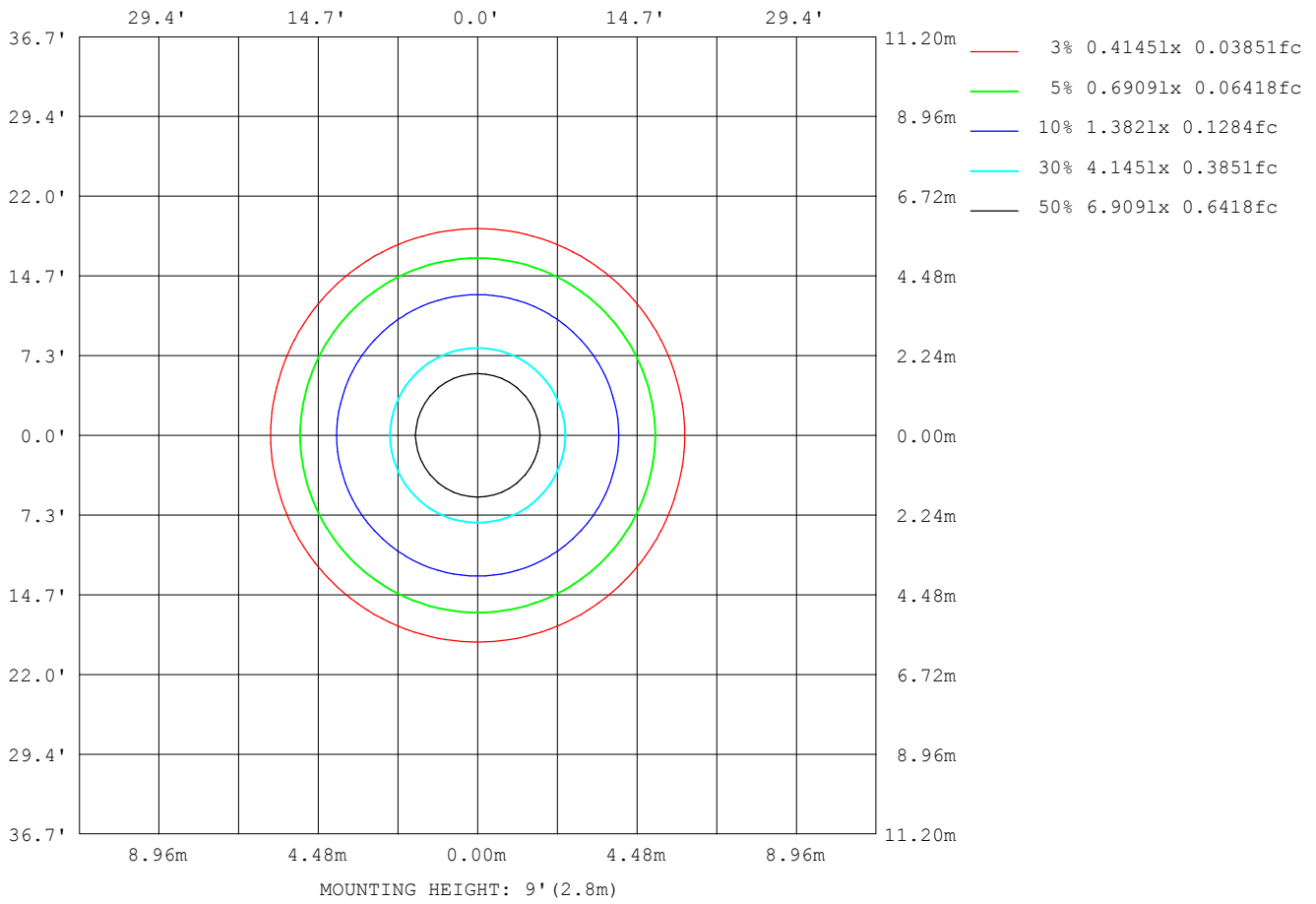


Note: The Curves indicate the illuminated area and the average illumination when the luminaire is at different distance.

C Range: 0 - 360DEG
 C Interval: 15.0DEG
 Test Speed: HIGH
 Temperature: 25.3DEG
 Operators: QC
 Test Date: 2021-03-04

γ Range: 0 - 180DEG
 γ Interval: 1.0DEG
 Test System: EVERFINE GO-2000A_V1 SYSTEM V2.0.362
 Humidity: 53.0%
 Test Distance: 10.530m [K=1.0000]
 Remarks:

ISOLUX DIAGRAM



C Range: 0 - 360DEG
 C Interval: 15.0DEG
 Test Speed: HIGH
 Temperature: 25.3DEG
 Operators: QC
 Test Date: 2021-03-04

γ Range: 0 - 180DEG
 γ Interval: 1.0DEG
 Test System: EVERFINE GO-2000A_V1 SYSTEM V2.0.362
 Humidity: 53.0%
 Test Distance: 10.530m [K=1.0000]
 Remarks:

LED Avg.L Report

Test:U:0V I:0A P:0W PF:0 Freq:0Hz Lamp Flux:314.145x1 lm		
NAME: E02-3W-4000K	TYPE:	WEIGHT:
SPEC.:	DIM.:	SERIAL No.:
MFR.: ERVAN	SUR.:	Shielding Angle:

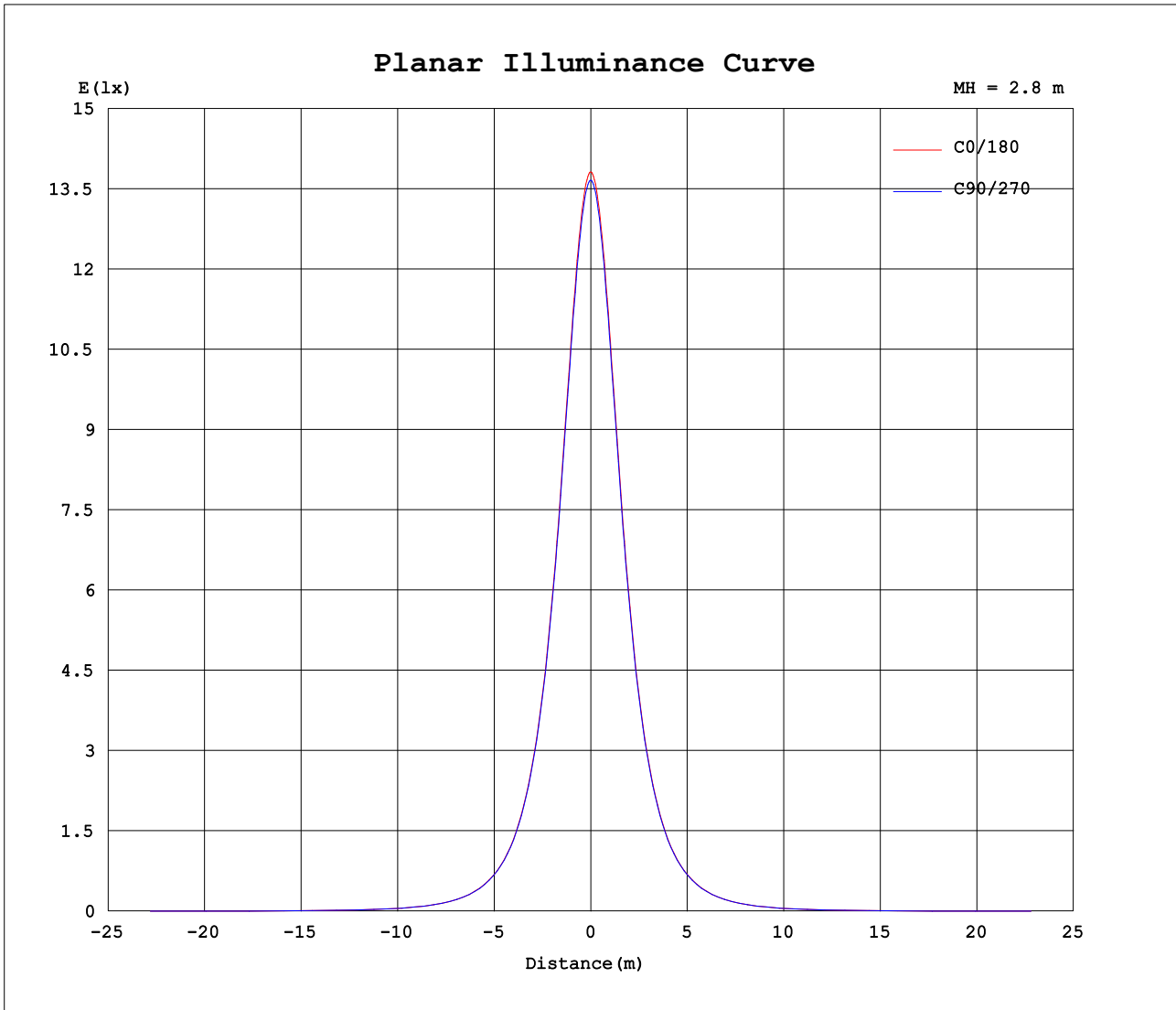
AvgL	cd/m2
L_0~180 (65) av	15636
L_0~180 (75) av	13652
L_0~180 (85) av	10766
L_90~270 (65) av	15654
L_90~270 (75) av	13712
L_90~270 (85) av	10968
L_45 (65) av	15650
L_45 (75) av	13678
L_45 (85) av	10729

Standard: GB/T 29293-2012

C Range: 0 - 360DEG
 C Interval: 15.0DEG
 Test Speed: HIGH
 Temperature:25.3DEG
 Operators:QC
 Test Date:2021-03-04

γ Range: 0 - 180DEG
 γ Interval: 1.0DEG
 Test System:EVERFINE GO-2000A_V1 SYSTEM V2.0.362
 Humidity:53.0%
 Test Distance:10.530m [K=1.0000]
 Remarks:

Planar Illuminance Curve



C Range: 0 - 360DEG
 C Interval: 15.0DEG
 Test Speed: HIGH
 Temperature: 25.3DEG
 Operators: QC
 Test Date: 2021-03-04

γ Range: 0 - 180DEG
 γ Interval: 1.0DEG
 Test System: EVERFINE GO-2000A_V1 SYSTEM V2.0.362
 Humidity: 53.0%
 Test Distance: 10.530m [K=1.0000]
 Remarks:

LUMINOUS DISTRIBUTION INTENSITY DATA

Table--1

UNIT: cd

C (DEG) γ (DEG)	0	15	30	45	60	75	90	105	120	135	150	165	180	195	210	225	240	255	270
0	107	107	107	107	107	107	107	107	107	107	107	107	107	107	107	107	107	107	107
5	107	107	107	107	107	107	107	107	107	107	107	107	107	107	107	107	107	107	107
10	105	105	105	105	105	105	105	105	105	105	105	105	105	105	105	105	105	105	105
15	103	103	103	103	103	103	103	103	103	103	103	103	103	103	103	103	103	103	103
20	99.5	99.5	99.5	99.5	99.5	99.6	99.5	99.6	99.5	99.5	99.5	99.5	99.5	99.5	99.5	99.5	99.5	99.6	99.5
25	95.3	95.3	95.3	95.3	95.2	95.4	95.2	95.4	95.2	95.3	95.3	95.3	95.3	95.3	95.3	95.3	95.2	95.4	95.2
30	90.2	90.2	90.2	90.2	90.2	90.3	90.2	90.3	90.2	90.2	90.2	90.2	90.2	90.2	90.2	90.2	90.2	90.3	90.2
35	84.5	84.5	84.5	84.5	84.5	84.6	84.4	84.6	84.5	84.5	84.5	84.5	84.5	84.5	84.5	84.5	84.5	84.6	84.4
40	78.1	78.1	78.1	78.1	78.0	78.1	78.0	78.1	78.0	78.1	78.1	78.1	78.1	78.1	78.1	78.1	78.0	78.1	78.0
45	71.0	71.1	71.1	71.0	71.0	71.1	71.0	71.1	71.0	71.0	71.1	71.1	71.0	71.1	71.1	71.0	71.0	71.1	71.0
50	63.5	63.5	63.5	63.5	63.5	63.6	63.5	63.6	63.5	63.5	63.5	63.5	63.5	63.5	63.5	63.5	63.5	63.6	63.5
55	55.5	55.5	55.5	55.5	55.5	55.6	55.5	55.6	55.5	55.5	55.5	55.5	55.5	55.5	55.5	55.5	55.5	55.6	55.5
60	47.1	47.1	47.1	47.1	47.1	47.2	47.1	47.2	47.1	47.1	47.1	47.1	47.1	47.1	47.1	47.1	47.1	47.2	47.1
65	38.3	38.4	38.4	38.4	38.4	38.4	38.4	38.4	38.4	38.4	38.4	38.4	38.3	38.4	38.4	38.4	38.4	38.4	38.4
70	29.4	29.4	29.5	29.4	29.5	29.5	29.5	29.5	29.5	29.4	29.5	29.4	29.4	29.4	29.5	29.4	29.5	29.5	29.5
75	20.5	20.5	20.5	20.5	20.6	20.6	20.6	20.6	20.6	20.5	20.5	20.5	20.5	20.5	20.5	20.5	20.6	20.6	20.6
80	12.1	12.1	12.2	12.1	12.2	12.2	12.2	12.2	12.2	12.1	12.2	12.1	12.1	12.1	12.2	12.1	12.2	12.2	12.2
85	5.44	5.39	5.49	5.42	5.49	5.53	5.54	5.53	5.49	5.42	5.49	5.39	5.44	5.39	5.49	5.42	5.49	5.53	5.54
90	2.15	2.12	2.17	2.10	2.16	2.19	2.20	2.19	2.16	2.10	2.17	2.12	2.15	2.12	2.17	2.10	2.16	2.19	2.20
95	1.42	1.40	1.44	1.40	1.41	1.41	1.40	1.41	1.41	1.40	1.44	1.40	1.42	1.40	1.44	1.40	1.41	1.41	1.40
100	1.25	1.22	1.25	1.21	1.21	1.20	1.17	1.20	1.21	1.21	1.25	1.22	1.25	1.22	1.25	1.21	1.21	1.20	1.17
105	1.21	1.18	1.20	1.16	1.13	1.11	1.07	1.11	1.13	1.16	1.20	1.18	1.21	1.18	1.20	1.16	1.13	1.11	1.07
110	1.22	1.16	1.18	1.15	1.09	1.04	0.99	1.04	1.09	1.15	1.18	1.16	1.22	1.16	1.18	1.15	1.09	1.04	0.99
115	1.23	1.16	1.17	1.12	1.02	1.01	0.97	1.01	1.02	1.12	1.17	1.16	1.23	1.16	1.17	1.12	1.02	1.01	0.97
120	1.24	1.16	1.16	1.08	1.06	1.04	1.01	1.04	1.06	1.08	1.16	1.16	1.24	1.16	1.16	1.08	1.06	1.04	1.01
125	1.24	1.14	1.12	1.09	1.13	1.09	1.06	1.09	1.13	1.09	1.12	1.14	1.24	1.14	1.12	1.09	1.13	1.09	1.06
130	1.23	1.16	1.15	1.15	1.15	1.11	1.10	1.11	1.15	1.15	1.15	1.16	1.23	1.16	1.15	1.15	1.15	1.11	1.10
135	1.22	1.17	1.16	1.16	1.15	1.12	1.11	1.12	1.15	1.16	1.16	1.17	1.22	1.17	1.16	1.16	1.15	1.12	1.11
140	1.21	1.18	1.19	1.16	1.16	1.13	1.12	1.13	1.16	1.16	1.19	1.18	1.21	1.18	1.19	1.16	1.16	1.13	1.12
145	1.20	1.17	1.18	1.15	1.17	1.14	1.13	1.14	1.17	1.15	1.18	1.17	1.20	1.17	1.18	1.15	1.17	1.14	1.13
150	1.19	1.12	1.18	1.14	1.16	1.14	1.12	1.14	1.16	1.14	1.18	1.12	1.19	1.12	1.18	1.14	1.16	1.14	1.12
155	1.18	1.16	1.16	1.13	1.15	1.13	1.12	1.13	1.15	1.13	1.16	1.16	1.18	1.16	1.16	1.13	1.15	1.13	1.12
160	1.13	1.13	1.14	1.12	1.15	1.12	1.09	1.12	1.15	1.12	1.14	1.13	1.13	1.13	1.14	1.12	1.15	1.12	1.09
165	1.09	1.11	1.10	1.08	1.08	1.09	1.06	1.09	1.08	1.08	1.10	1.11	1.09	1.11	1.10	1.08	1.08	1.09	1.06
170	1.01	1.02	1.02	1.02	1.01	1.02	1.00	1.02	1.01	1.02	1.02	1.02	1.01	1.02	1.02	1.02	1.01	1.02	1.00
175	1.00	1.01	1.02	1.01	1.02	1.02	1.01	1.02	1.02	1.01	1.02	1.01	1.00	1.01	1.02	1.01	1.02	1.02	1.01
180	1.02	1.03	1.03	1.03	1.03	1.04	1.03	1.04	1.03	1.03	1.03	1.03	1.02	1.03	1.03	1.03	1.03	1.04	1.03

C Range: 0 - 360DEG
 C Interval: 15.0DEG
 Test Speed: HIGH
 Temperature:25.3DEG
 Operators:QC
 Test Date:2021-03-04

γ Range: 0 - 180DEG
 γ Interval: 1.0DEG
 Test System:EVERFINE GO-2000A_V1 SYSTEM V2.0.362
 Humidity:53.0%
 Test Distance:10.530m [K=1.0000]
 Remarks:

LUMINOUS DISTRIBUTION INTENSITY DATA

Table--2

UNIT: cd

C (DEG) γ (DEG)	285	300	315	330	345															
0	107	107	107	107	107															
5	107	107	107	107	107															
10	105	105	105	105	105															
15	103	103	103	103	103															
20	99.6	99.5	99.5	99.5	99.5															
25	95.4	95.2	95.3	95.3	95.3															
30	90.3	90.2	90.2	90.2	90.2															
35	84.6	84.5	84.5	84.5	84.5															
40	78.1	78.0	78.1	78.1	78.1															
45	71.1	71.0	71.0	71.1	71.1															
50	63.6	63.5	63.5	63.5	63.5															
55	55.6	55.5	55.5	55.5	55.5															
60	47.2	47.1	47.1	47.1	47.1															
65	38.4	38.4	38.4	38.4	38.4															
70	29.5	29.5	29.4	29.5	29.4															
75	20.6	20.6	20.5	20.5	20.5															
80	12.2	12.2	12.1	12.2	12.1															
85	5.53	5.49	5.42	5.49	5.39															
90	2.19	2.16	2.10	2.17	2.12															
95	1.41	1.41	1.40	1.44	1.40															
100	1.20	1.21	1.21	1.25	1.22															
105	1.11	1.13	1.16	1.20	1.18															
110	1.04	1.09	1.15	1.18	1.16															
115	1.01	1.02	1.12	1.17	1.16															
120	1.04	1.06	1.08	1.16	1.16															
125	1.09	1.13	1.09	1.12	1.14															
130	1.11	1.15	1.15	1.15	1.16															
135	1.12	1.15	1.16	1.16	1.17															
140	1.13	1.16	1.16	1.19	1.18															
145	1.14	1.17	1.15	1.18	1.17															
150	1.14	1.16	1.14	1.18	1.12															
155	1.13	1.15	1.13	1.16	1.16															
160	1.12	1.15	1.12	1.14	1.13															
165	1.09	1.08	1.08	1.10	1.11															
170	1.02	1.01	1.02	1.02	1.02															
175	1.02	1.02	1.01	1.02	1.01															
180	1.04	1.03	1.03	1.03	1.03															

C Range: 0 - 360DEG
 C Interval: 15.0DEG
 Test Speed: HIGH
 Temperature:25.3DEG
 Operators:QC
 Test Date:2021-03-04

γ Range: 0 - 180DEG
 γ Interval: 1.0DEG
 Test System:EVERFINE GO-2000A_V1 SYSTEM V2.0.362
 Humidity:53.0%
 Test Distance:10.530m [K=1.0000]
 Remarks:

Photometric Data Table [cd]

G/C	0.0	15.0	30.0	45.0	60.0	75.0	90.0	105.0	120.0	135.0
0.0	107.3	107.3	107.3	107.3	107.3	107.3	107.3	107.3	107.3	107.3
3.0	107.1	107.1	107.1	107.1	107.1	107.2	107.1	107.2	107.1	107.1
6.0	106.5	106.6	106.6	106.6	106.6	106.7	106.5	106.7	106.6	106.6
9.0	105.6	105.7	105.7	105.7	105.7	105.8	105.7	105.8	105.7	105.7
12.0	104.4	104.5	104.4	104.5	104.4	104.6	104.4	104.6	104.4	104.5
15.0	102.8	102.9	102.9	102.9	102.8	103.0	102.8	103.0	102.8	102.9
18.0	100.9	101.0	101.0	100.9	100.9	101.0	100.9	101.0	100.9	100.9
21.0	98.70	98.73	98.72	98.72	98.69	98.81	98.68	98.81	98.69	98.72
24.0	96.15	96.19	96.17	96.19	96.14	96.28	96.13	96.28	96.14	96.19
27.0	93.33	93.35	93.35	93.35	93.32	93.44	93.31	93.44	93.32	93.35
30.0	90.22	90.25	90.25	90.25	90.22	90.32	90.21	90.32	90.22	90.25
33.0	86.85	86.88	86.88	86.88	86.85	86.94	86.84	86.94	86.85	86.88
36.0	83.24	83.27	83.26	83.26	83.22	83.32	83.21	83.32	83.22	83.26
39.0	79.39	79.42	79.41	79.40	79.37	79.47	79.35	79.47	79.37	79.40
42.0	75.31	75.33	75.33	75.32	75.30	75.38	75.29	75.38	75.30	75.32
45.0	71.03	71.05	71.06	71.04	71.03	71.10	71.04	71.10	71.03	71.04
48.0	66.56	66.59	66.59	66.58	66.56	66.65	66.55	66.65	66.56	66.58
51.0	61.92	61.95	61.95	61.96	61.92	62.01	61.91	62.01	61.92	61.96
54.0	57.11	57.14	57.17	57.16	57.13	57.22	57.14	57.22	57.13	57.16
57.0	52.17	52.19	52.20	52.20	52.18	52.26	52.17	52.26	52.18	52.20
60.0	47.06	47.10	47.12	47.10	47.10	47.17	47.10	47.17	47.10	47.10
63.0	41.88	41.88	41.91	41.90	41.91	41.96	41.92	41.96	41.91	41.90
66.0	36.56	36.59	36.61	36.60	36.61	36.67	36.62	36.67	36.61	36.60
69.0	31.19	31.21	31.24	31.23	31.24	31.30	31.26	31.30	31.24	31.23
72.0	25.81	25.84	25.86	25.85	25.86	25.93	25.89	25.93	25.86	25.85
75.0	20.49	20.52	20.52	20.53	20.56	20.60	20.58	20.60	20.56	20.53
78.0	15.35	15.35	15.41	15.38	15.42	15.45	15.43	15.45	15.42	15.38
81.0	10.60	10.58	10.63	10.61	10.66	10.70	10.69	10.70	10.66	10.61
84.0	6.559	6.509	6.588	6.533	6.600	6.643	6.662	6.643	6.600	6.533
87.0	3.751	3.611	3.700	3.625	3.717	3.776	3.829	3.776	3.717	3.625
90.0	2.149	2.123	2.168	2.105	2.162	2.187	2.196	2.187	2.162	2.105
93.0	1.568	1.623	1.584	1.539	1.560	1.557	1.538	1.557	1.560	1.539
96.0	1.374	1.347	1.391	1.349	1.359	1.351	1.333	1.351	1.359	1.349
99.0	1.271	1.238	1.277	1.242	1.234	1.228	1.213	1.228	1.234	1.242
102.0	1.225	1.204	1.224	1.182	1.165	1.151	1.122	1.151	1.165	1.182
105.0	1.207	1.180	1.201	1.155	1.126	1.111	1.072	1.111	1.126	1.155
108.0	1.207	1.168	1.179	1.148	1.099	1.061	1.018	1.061	1.099	1.148
111.0	1.218	1.153	1.170	1.151	1.073	1.026	0.9889	1.026	1.073	1.151
114.0	1.221	1.155	1.170	1.137	1.035	1.008	0.9815	1.008	1.035	1.137
117.0	1.232	1.160	1.168	1.106	1.014	1.017	0.9781	1.017	1.014	1.106
120.0	1.239	1.164	1.159	1.079	1.058	1.038	1.007	1.038	1.058	1.079
123.0	1.246	1.161	1.143	1.068	1.122	1.073	1.040	1.073	1.122	1.068
126.0	1.246	1.142	1.116	1.104	1.135	1.098	1.076	1.098	1.135	1.104
129.0	1.236	1.151	1.143	1.149	1.142	1.109	1.087	1.109	1.142	1.149
132.0	1.225	1.166	1.148	1.158	1.144	1.115	1.108	1.115	1.144	1.158
135.0	1.225	1.168	1.165	1.157	1.155	1.122	1.108	1.122	1.155	1.157
138.0	1.214	1.179	1.192	1.162	1.162	1.127	1.119	1.127	1.162	1.162
141.0	1.210	1.182	1.185	1.162	1.158	1.129	1.119	1.129	1.158	1.162
144.0	1.203	1.169	1.186	1.151	1.162	1.140	1.127	1.140	1.162	1.151
147.0	1.196	1.159	1.181	1.144	1.167	1.138	1.127	1.138	1.167	1.144
150.0	1.193	1.123	1.179	1.140	1.158	1.138	1.123	1.138	1.158	1.140
153.0	1.182	1.159	1.174	1.135	1.155	1.140	1.123	1.140	1.155	1.135
156.0	1.175	1.151	1.163	1.131	1.148	1.136	1.108	1.136	1.148	1.131
159.0	1.142	1.130	1.152	1.124	1.140	1.124	1.097	1.124	1.140	1.124
162.0	1.121	1.124	1.127	1.102	1.108	1.107	1.079	1.107	1.108	1.102
165.0	1.092	1.106	1.103	1.083	1.082	1.089	1.061	1.089	1.082	1.083
168.0	1.063	1.065	1.072	1.044	1.046	1.048	1.029	1.048	1.046	1.044
171.0	0.9849	0.9997	1.009	1.005	1.006	1.010	1.003	1.010	1.006	1.005
174.0	0.9956	1.010	1.015	1.012	1.017	1.022	1.003	1.022	1.017	1.012
177.0	1.006	1.016	1.024	1.017	1.024	1.031	1.011	1.031	1.024	1.017
180.0	1.021	1.027	1.033	1.028	1.030	1.042	1.029	1.042	1.030	1.028
G/C	150.0	165.0	180.0	195.0	210.0	225.0	240.0	255.0	270.0	285.0
0.0	107.3	107.3	107.3	107.3	107.3	107.3	107.3	107.3	107.3	107.3
3.0	107.1	107.1	107.1	107.1	107.1	107.1	107.1	107.2	107.1	107.2
6.0	106.6	106.6	106.5	106.6	106.6	106.6	106.6	106.7	106.5	106.7
9.0	105.7	105.7	105.6	105.7	105.7	105.7	105.7	105.8	105.7	105.8
12.0	104.4	104.5	104.4	104.5	104.4	104.5	104.4	104.6	104.4	104.6
15.0	102.9	102.9	102.8	102.9	102.9	102.9	102.8	103.0	102.8	103.0
18.0	101.0	101.0	100.9	101.0	101.0	100.9	100.9	101.0	100.9	101.0
21.0	98.72	98.73	98.70	98.73	98.72	98.72	98.69	98.81	98.68	98.81
24.0	96.17	96.19	96.15	96.19	96.17	96.19	96.14	96.28	96.13	96.28
27.0	93.35	93.35	93.33	93.35	93.35	93.35	93.32	93.44	93.31	93.44
30.0	90.25	90.25	90.22	90.25	90.25	90.25	90.22	90.32	90.21	90.32

C Range: 0 - 360DEG
 C Interval: 15.0DEG
 Test Speed: HIGH
 Temperature:25.3DEG
 Operators:QC
 Test Date:2021-03-04

γ Range: 0 - 180DEG
 γ Interval: 1.0DEG
 Test System:EVERFINE GO-2000A_V1 SYSTEM V2.0.362
 Humidity:53.0%
 Test Distance:10.530m [K=1.0000]
 Remarks:

Photometric Data Table [cd]

33.0	86.88	86.88	86.85	86.88	86.88	86.88	86.85	86.94	86.84	86.94
36.0	83.26	83.27	83.24	83.27	83.26	83.26	83.22	83.32	83.21	83.32
39.0	79.41	79.42	79.39	79.42	79.41	79.40	79.37	79.47	79.35	79.47
42.0	75.33	75.33	75.31	75.33	75.33	75.32	75.30	75.38	75.29	75.38
45.0	71.06	71.05	71.03	71.05	71.06	71.04	71.03	71.10	71.04	71.10
48.0	66.60	66.59	66.56	66.59	66.60	66.58	66.56	66.65	66.55	66.65
51.0	61.95	61.95	61.92	61.95	61.95	61.96	61.92	62.01	61.91	62.01
54.0	57.17	57.14	57.11	57.14	57.17	57.16	57.13	57.22	57.14	57.22
57.0	52.20	52.19	52.17	52.19	52.20	52.20	52.18	52.26	52.17	52.26
60.0	47.12	47.10	47.06	47.10	47.12	47.10	47.10	47.17	47.10	47.17
63.0	41.91	41.88	41.88	41.88	41.91	41.90	41.91	41.96	41.92	41.96
66.0	36.61	36.59	36.56	36.59	36.61	36.60	36.61	36.67	36.62	36.67
69.0	31.24	31.21	31.19	31.21	31.24	31.23	31.24	31.30	31.26	31.30
72.0	25.86	25.84	25.81	25.84	25.86	25.85	25.86	25.93	25.89	25.93
75.0	20.52	20.52	20.49	20.52	20.52	20.53	20.56	20.60	20.58	20.60
78.0	15.41	15.35	15.35	15.35	15.41	15.38	15.42	15.45	15.43	15.45
81.0	10.63	10.58	10.60	10.58	10.63	10.61	10.66	10.70	10.69	10.70
84.0	6.588	6.509	6.559	6.509	6.588	6.533	6.600	6.643	6.662	6.643
87.0	3.700	3.611	3.751	3.611	3.700	3.625	3.717	3.776	3.829	3.776
90.0	2.168	2.123	2.149	2.123	2.168	2.105	2.162	2.187	2.196	2.187
93.0	1.584	1.623	1.568	1.623	1.584	1.539	1.560	1.557	1.538	1.557
96.0	1.391	1.347	1.374	1.347	1.391	1.349	1.359	1.351	1.333	1.351
99.0	1.277	1.238	1.271	1.238	1.277	1.242	1.234	1.228	1.213	1.228
102.0	1.224	1.204	1.225	1.204	1.224	1.182	1.165	1.151	1.122	1.151
105.0	1.201	1.180	1.207	1.180	1.201	1.155	1.126	1.111	1.072	1.111
108.0	1.179	1.168	1.207	1.168	1.179	1.148	1.099	1.061	1.018	1.061
111.0	1.170	1.153	1.218	1.153	1.170	1.151	1.073	1.026	0.9889	1.026
114.0	1.170	1.155	1.221	1.155	1.170	1.137	1.035	1.008	0.9815	1.008
117.0	1.168	1.160	1.232	1.160	1.168	1.106	1.014	1.017	0.9781	1.017
120.0	1.159	1.164	1.239	1.164	1.159	1.079	1.058	1.038	1.007	1.038
123.0	1.143	1.161	1.246	1.161	1.143	1.068	1.122	1.073	1.040	1.073
126.0	1.116	1.142	1.246	1.142	1.116	1.104	1.135	1.098	1.076	1.098
129.0	1.143	1.151	1.236	1.151	1.143	1.149	1.142	1.109	1.087	1.109
132.0	1.148	1.166	1.225	1.166	1.148	1.158	1.144	1.115	1.108	1.115
135.0	1.165	1.168	1.225	1.168	1.165	1.157	1.155	1.122	1.108	1.122
138.0	1.192	1.179	1.214	1.179	1.192	1.162	1.162	1.127	1.119	1.127
141.0	1.185	1.182	1.210	1.182	1.185	1.162	1.158	1.129	1.119	1.129
144.0	1.186	1.169	1.203	1.169	1.186	1.151	1.162	1.140	1.127	1.140
147.0	1.181	1.159	1.196	1.159	1.181	1.144	1.167	1.138	1.127	1.138
150.0	1.179	1.123	1.193	1.123	1.179	1.140	1.158	1.138	1.123	1.138
153.0	1.174	1.159	1.182	1.159	1.174	1.135	1.155	1.140	1.123	1.140
156.0	1.163	1.151	1.175	1.151	1.163	1.131	1.148	1.136	1.108	1.136
159.0	1.152	1.130	1.142	1.130	1.152	1.124	1.140	1.124	1.097	1.124
162.0	1.127	1.124	1.121	1.124	1.127	1.102	1.108	1.107	1.079	1.107
165.0	1.103	1.106	1.092	1.106	1.103	1.083	1.082	1.089	1.061	1.089
168.0	1.072	1.065	1.063	1.065	1.072	1.044	1.046	1.048	1.029	1.048
171.0	1.009	0.9997	0.9849	0.9997	1.009	1.005	1.006	1.010	1.003	1.010
174.0	1.015	1.010	0.9956	1.010	1.015	1.012	1.017	1.022	1.003	1.022
177.0	1.024	1.016	1.006	1.016	1.024	1.017	1.024	1.031	1.011	1.031
180.0	1.033	1.027	1.021	1.027	1.033	1.028	1.030	1.042	1.029	1.042
G/C	300.0	315.0	330.0	345.0						
0.0	107.3	107.3	107.3	107.3						
3.0	107.1	107.1	107.1	107.1						
6.0	106.6	106.6	106.6	106.6						
9.0	105.7	105.7	105.7	105.7						
12.0	104.4	104.5	104.4	104.5						
15.0	102.8	102.9	102.9	102.9						
18.0	100.9	100.9	101.0	101.0						
21.0	98.69	98.72	98.72	98.73						
24.0	96.14	96.19	96.17	96.19						
27.0	93.32	93.35	93.35	93.35						
30.0	90.22	90.25	90.25	90.25						
33.0	86.85	86.88	86.88	86.88						
36.0	83.22	83.26	83.26	83.27						
39.0	79.37	79.40	79.41	79.42						
42.0	75.30	75.32	75.33	75.33						
45.0	71.03	71.04	71.06	71.05						
48.0	66.56	66.58	66.60	66.59						
51.0	61.92	61.96	61.95	61.95						
54.0	57.13	57.16	57.17	57.14						
57.0	52.18	52.20	52.20	52.19						
60.0	47.10	47.10	47.12	47.10						
63.0	41.91	41.90	41.91	41.88						
66.0	36.61	36.60	36.61	36.59						

C Range: 0 - 360DEG
 C Interval: 15.0DEG
 Test Speed: HIGH
 Temperature:25.3DEG
 Operators:QC
 Test Date:2021-03-04

γ Range: 0 - 180DEG
 γ Interval: 1.0DEG
 Test System:EVERFINE GO-2000A_V1 SYSTEM V2.0.362
 Humidity:53.0%
 Test Distance:10.530m [K=1.0000]
 Remarks:

Photometric Data Table [cd]

69.0	31.24	31.23	31.24	31.21
72.0	25.86	25.85	25.86	25.84
75.0	20.56	20.53	20.52	20.52
78.0	15.42	15.38	15.41	15.35
81.0	10.66	10.61	10.63	10.58
84.0	6.600	6.533	6.588	6.509
87.0	3.717	3.625	3.700	3.611
90.0	2.162	2.105	2.168	2.123
93.0	1.560	1.539	1.584	1.623
96.0	1.359	1.349	1.391	1.347
99.0	1.234	1.242	1.277	1.238
102.0	1.165	1.182	1.224	1.204
105.0	1.126	1.155	1.201	1.180
108.0	1.099	1.148	1.179	1.168
111.0	1.073	1.151	1.170	1.153
114.0	1.035	1.137	1.170	1.155
117.0	1.014	1.106	1.168	1.160
120.0	1.058	1.079	1.159	1.164
123.0	1.122	1.068	1.143	1.161
126.0	1.135	1.104	1.116	1.142
129.0	1.142	1.149	1.143	1.151
132.0	1.144	1.158	1.148	1.166
135.0	1.155	1.157	1.165	1.168
138.0	1.162	1.162	1.192	1.179
141.0	1.158	1.162	1.185	1.182
144.0	1.162	1.151	1.186	1.169
147.0	1.167	1.144	1.181	1.159
150.0	1.158	1.140	1.179	1.123
153.0	1.155	1.135	1.174	1.159
156.0	1.148	1.131	1.163	1.151
159.0	1.140	1.124	1.152	1.130
162.0	1.108	1.102	1.127	1.124
165.0	1.082	1.083	1.103	1.106
168.0	1.046	1.044	1.072	1.065
171.0	1.006	1.005	1.009	0.9997
174.0	1.017	1.012	1.015	1.010
177.0	1.024	1.017	1.024	1.016
180.0	1.030	1.028	1.033	1.027

C Range: 0 - 360DEG
 C Interval: 15.0DEG
 Test Speed: HIGH
 Temperature:25.3DEG
 Operators:QC
 Test Date:2021-03-04

γ Range: 0 - 180DEG
 γ Interval: 1.0DEG
 Test System:EVERFINE GO-2000A_V1 SYSTEM V2.0.362
 Humidity:53.0%
 Test Distance:10.530m [K=1.0000]
 Remarks: