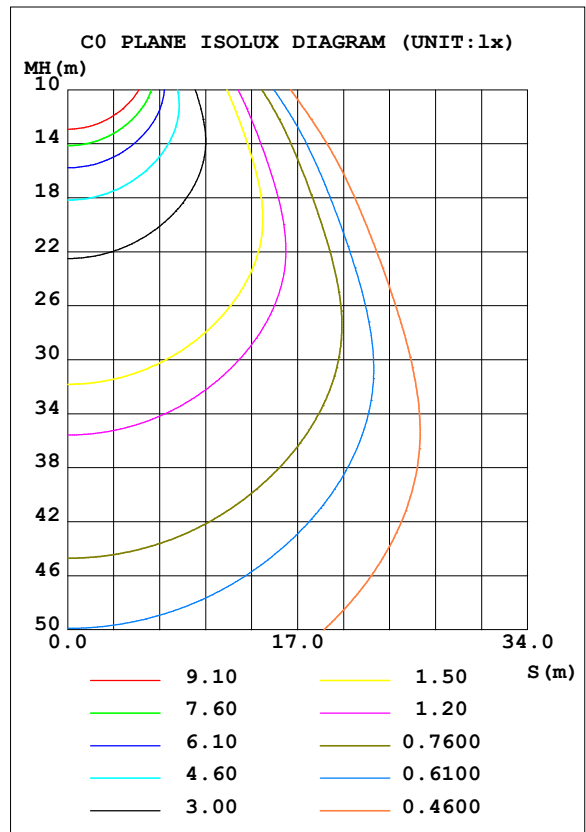
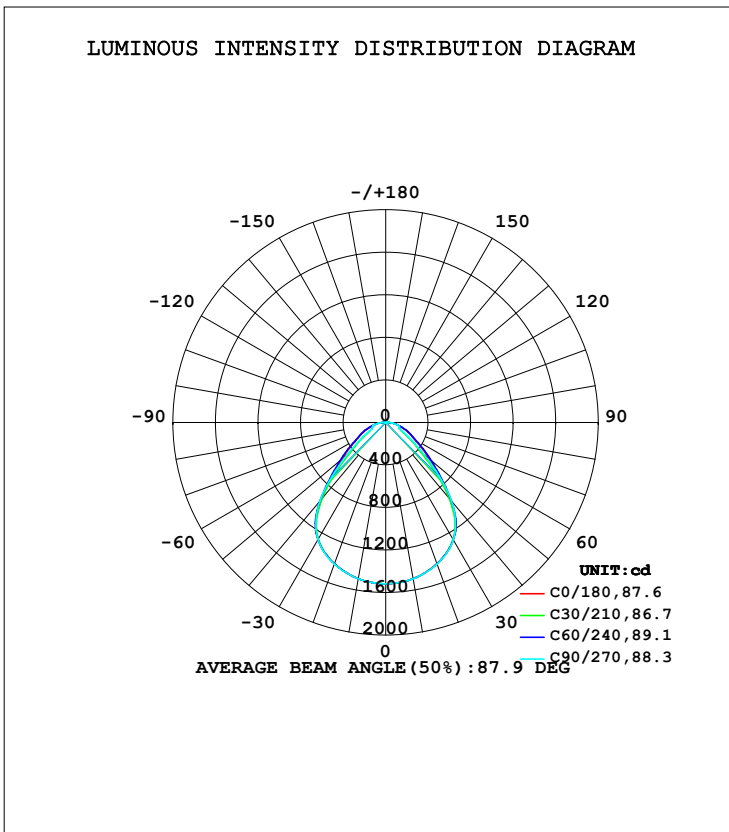


LUMINAIRE PHOTOMETRIC TEST REPORT

Test:U:230.4V I:0.1211A P:26.39W PF:0.9457 Freq:49.99Hz Lamp Flux:3193.7x1 lm		
NAME: P30-30120-4000K	TYPE:	WEIGHT:
SPEC.:	DIM.:	SERIAL No.:
MFR.: TUBI	SUR.:	Shielding Angle:

DATA OF LAMP		PHOTOMETRIC DATA Eff: 121.00 lm/W			
MODEL		I <sub>max</sub> (cd)	1517	S/MH (C0/180)	1.23
NOMINAL POWER (W)	27	LOR (%)	100.0	S/MH (C90/270)	1.24
RATED VOLTAGE (V)	230	TOTAL FLUX (lm)	3193.7	η UP, DN (C0-180)	0.4, 49.6
NOMINAL FLUX (lm)	3193.7	CIE CLASS	DIRECT	η UP, DN (C180-360)	0.4, 49.6
LAMPS INSIDE	1	η up (%)	0.9	CIBSE SHR NOM	1.25
TEST VOLTAGE (V)	230	η down (%)	99.1	CIBSE SHR MAX	1.30



C Range: 0 - 360DEG  
 C Interval: 15.0DEG  
 Test Speed: HIGH  
 Temperature: 25.3DEG  
 Operators: QC  
 Test Date: 2021-06-04

γ Range: 0 - 180DEG  
 γ Interval: 1.0DEG  
 Test System: EVERFINE GO-2000A\_V1 SYSTEM V2.0.362  
 Humidity: 53.0%  
 Test Distance: 10.530m [K=1.0000]  
 Remarks:

ZONAL FLUX DIAGRAM

ZONAL FLUX DIAGRAM:

γ	C0	C45	C90	C135	C180	C225	C270	C315	γ	Φ zone	Φ total	%lum,lamp
10	1491	1492	1492	1492	1491	1492	1492	1492	0- 10	143.6	143.6	4.5,4.5
20	1412	1413	1415	1413	1412	1413	1415	1413	10- 20	411.8	555.4	17.4,17.4
30	1273	1272	1274	1272	1273	1272	1274	1272	20- 30	623.0	1178	36.9,36.9
40	939.6	943.9	963.7	943.9	939.6	943.9	963.7	943.9	30- 40	708.2	1887	59.1,59.1
50	541.6	485.5	475.0	485.5	541.6	485.5	475.0	485.5	40- 50	546.4	2433	76.2,76.2
60	310.7	244.7	212.2	244.7	310.7	244.7	212.2	244.7	50- 60	321.8	2755	86.3,86.3
70	187.9	182.1	131.8	182.1	187.9	182.1	131.8	182.1	60- 70	207.0	2962	92.7,92.7
80	100.6	99.43	92.55	99.43	100.6	99.43	92.55	99.43	70- 80	147.3	3109	97.4,97.4
90	1.368	1.632	1.541	1.632	1.368	1.632	1.541	1.632	80- 90	56.02	3165	99.1,99.1
100	1.632	1.739	1.820	1.739	1.632	1.739	1.820	1.739	90-100	1.512	3167	99.2,99.2
110	2.630	2.735	2.829	2.735	2.630	2.735	2.829	2.735	100-110	2.329	3169	99.2,99.2
120	3.932	4.006	4.025	4.006	3.932	4.006	4.025	4.006	110-120	3.299	3172	99.3,99.3
130	5.403	5.416	5.360	5.416	5.403	5.416	5.360	5.416	120-130	4.196	3176	99.5,99.5
140	6.797	6.753	6.729	6.753	6.797	6.753	6.729	6.753	130-140	4.718	3181	99.6,99.6
150	8.098	8.059	8.058	8.059	8.098	8.059	8.058	8.059	140-150	4.648	3186	99.8,99.8
160	9.528	9.370	9.375	9.370	9.528	9.370	9.375	9.370	150-160	4.037	3190	99.9,99.9
170	10.88	10.49	10.42	10.49	10.88	10.49	10.42	10.49	160-170	2.821	3193	100,100
180	11.32	11.01	10.90	11.01	11.32	11.01	10.90	11.01	170-180	1.030	3194	100,100
DEG	LUMINOUS INTENSITY:cd									UNIT:lm		

Conical surface Flux(90deg): 2192.4 lm

%lum = 68.6%  
%lamp = 68.6%

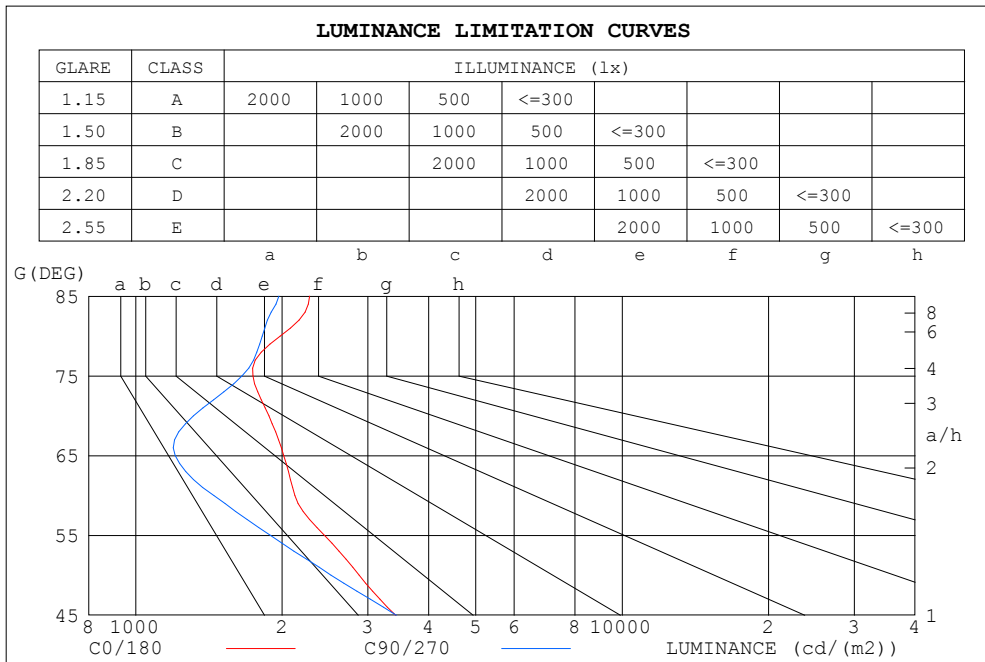
Conical surface Flux(120deg): 2754.8 lm

%lum = 86.3%  
%lamp = 86.3%

C Range: 0 - 360DEG  
C Interval: 15.0DEG  
Test Speed: HIGH  
Temperature:25.3DEG  
Operators:QC  
Test Date:2021-06-04

γ Range: 0 - 180DEG  
γ Interval: 1.0DEG  
Test System:EVERFINE GO-2000A\_V1 SYSTEM V2.0.362  
Humidity:53.0%  
Test Distance:10.530m [K=1.0000]  
Remarks:

LUMINANCE LIMITATION CURVES



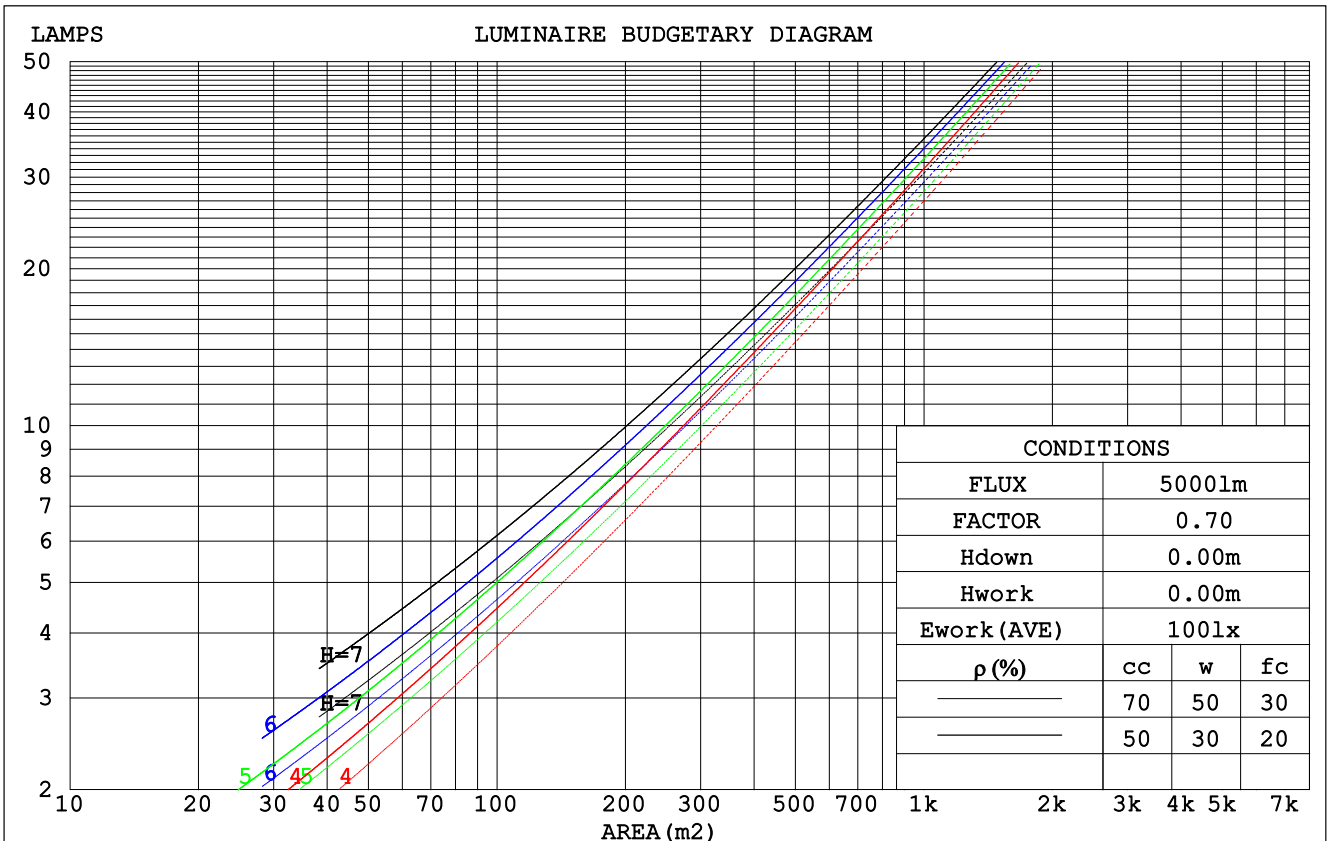
LUMINANCE cd/(m2)		
G (DEG)	C0/180	C90/270
85	2276	1968
80	1980	1819
75	1741	1655
70	1877	1315
65	2014	1204
60	2123	1448
55	2440	1892
50	2879	2522
45	3421	3434

C Range: 0 - 360DEG  
 C Interval: 15.0DEG  
 Test Speed: HIGH  
 Temperature: 25.3DEG  
 Operators: QC  
 Test Date: 2021-06-04

$\gamma$  Range: 0 - 180DEG  
 $\gamma$  Interval: 1.0DEG  
 Test System: EVERFINE GO-2000A\_V1 SYSTEM V2.0.362  
 Humidity: 53.0%  
 Test Distance: 10.530m [K=1.0000]  
 Remarks:

CU AND LUMINAIRE BUDGETARY ESTIMATE DIAGRAM

$\rho_{cc}$	80%			70%			50%			30%			10%			0
$\rho_w$	50%	30%	10%	50%	30%	10%	50%	30%	10%	50%	30%	10%	50%	30%	10%	0
$\rho_{fc}$	20%			20%			20%			20%			20%			0
RCR	RCR:Room Cavity Ratio						Coefficients of Utilization(CU)									
0.0	1.19	1.19	1.19	1.16	1.16	1.16	1.11	1.11	1.11	1.06	1.06	1.06	1.01	1.01	1.01	.99
1.0	1.06	1.02	.99	1.03	.90	.97	.99	.96	.94	.95	.93	.91	.91	.90	.88	.86
2.0	.94	.88	.83	.92	.87	.82	.89	.84	.80	.85	.81	.78	.82	.79	.76	.74
3.0	.84	.77	.71	.83	.76	.71	.80	.74	.69	.77	.72	.68	.74	.70	.67	.65
4.0	.76	.68	.62	.75	.67	.62	.72	.66	.61	.70	.64	.60	.68	.63	.59	.57
5.0	.69	.61	.55	.68	.60	.55	.66	.59	.54	.64	.58	.53	.62	.57	.53	.51
6.0	.63	.55	.49	.62	.54	.49	.60	.53	.48	.58	.52	.48	.57	.51	.47	.45
7.0	.58	.49	.44	.57	.49	.44	.55	.48	.43	.54	.48	.43	.52	.47	.43	.41
8.0	.53	.45	.40	.52	.45	.40	.51	.44	.39	.50	.43	.39	.48	.43	.39	.37
9.0	.49	.41	.36	.48	.41	.36	.47	.40	.36	.46	.40	.36	.45	.39	.35	.34
10.0	.45	.38	.33	.45	.38	.33	.44	.37	.33	.43	.37	.33	.42	.36	.32	.31



C Range: 0 - 360DEG  
 C Interval: 15.0DEG  
 Test Speed: HIGH  
 Temperature:25.3DEG  
 Operators:QC  
 Test Date:2021-06-04

$\gamma$  Range: 0 - 180DEG  
 $\gamma$  Interval: 1.0DEG  
 Test System:EVERFINE GO-2000A\_V1 SYSTEM V2.0.362  
 Humidity:53.0%  
 Test Distance:10.530m [K=1.0000]  
 Remarks:

WEC AND CCEC

pcc	80%			70%			50%			30%			10%			0
pw	50%	30%	10%	50%	30%	10%	50%	30%	10%	50%	30%	10%	50%	30%	10%	0
pfc	20%			20%			20%			20%			20%			0
RCR	RCR:Room Cavity Ratio						Wall Exitance Coefficients(WEC)									
0.0																
1.0	.271	.154	.049	.263	.150	.048	.250	.143	.046	.237	.137	.044	.226	.131	.042	
2.0	.254	.139	.043	.248	.136	.042	.236	.131	.041	.225	.126	.040	.215	.122	.038	
3.0	.237	.126	.038	.231	.124	.037	.221	.120	.036	.211	.116	.035	.202	.112	.035	
4.0	.220	.115	.034	.216	.113	.033	.206	.109	.033	.198	.106	.032	.190	.103	.031	
5.0	.206	.105	.030	.201	.103	.030	.193	.101	.030	.186	.098	.029	.179	.095	.029	
6.0	.193	.097	.028	.189	.095	.027	.181	.093	.027	.175	.091	.027	.168	.089	.026	
7.0	.181	.089	.025	.177	.088	.025	.171	.086	.025	.165	.084	.025	.159	.083	.024	
8.0	.170	.083	.023	.167	.082	.023	.161	.081	.023	.156	.079	.023	.151	.077	.023	
9.0	.161	.078	.022	.158	.077	.022	.153	.075	.021	.148	.074	.021	.143	.073	.021	
10.0	.152	.073	.020	.149	.072	.020	.145	.071	.020	.140	.070	.020	.136	.068	.020	

pcc	80%			70%			50%			30%			10%			0
pw	50%	30%	10%	50%	30%	10%	50%	30%	10%	50%	30%	10%	50%	30%	10%	0
pfc	20%			20%			20%			20%			20%			0
RCR	RCR:Room Cavity Ratio						Ceiling Cavity Exitance Coefficients(CCEC)									
0.0	.197	.197	.197	.169	.169	.169	.115	.115	.115	.066	.066	.066	.021	.021	.021	
1.0	.184	.163	.144	.158	.140	.124	.108	.096	.086	.062	.056	.050	.020	.018	.016	
2.0	.174	.139	.109	.149	.120	.095	.102	.083	.066	.059	.048	.039	.019	.016	.013	
3.0	.165	.121	.086	.141	.104	.075	.097	.073	.052	.056	.042	.031	.018	.014	.010	
4.0	.157	.107	.070	.135	.093	.060	.092	.065	.043	.054	.038	.025	.017	.012	.008	
5.0	.149	.097	.058	.128	.084	.050	.088	.058	.036	.051	.034	.021	.016	.011	.007	
6.0	.142	.088	.049	.122	.076	.043	.084	.053	.030	.049	.031	.018	.016	.010	.006	
7.0	.136	.081	.043	.117	.070	.037	.081	.049	.026	.047	.029	.016	.015	.009	.005	
8.0	.130	.075	.038	.112	.065	.033	.077	.046	.023	.045	.027	.014	.015	.009	.005	
9.0	.124	.070	.034	.107	.061	.030	.074	.043	.021	.043	.025	.013	.014	.008	.004	
10.0	.119	.066	.031	.102	.057	.027	.071	.040	.019	.041	.024	.011	.013	.008	.004	

C Range: 0 - 360DEG  
 C Interval: 15.0DEG  
 Test Speed: HIGH  
 Temperature:25.3DEG  
 Operators:QC  
 Test Date:2021-06-04

γ Range: 0 - 180DEG  
 γ Interval: 1.0DEG  
 Test System:EVERFINE GO-2000A\_V1 SYSTEM V2.0.362  
 Humidity:53.0%  
 Test Distance:10.530m [K=1.0000]  
 Remarks:

UGR(Unified Glare Rating) Table

ceiling/cavity	0.7	0.7	0.5	0.5	0.3	0.7	0.7	0.5	0.5	0.3
walls	0.5	0.3	0.5	0.3	0.3	0.5	0.3	0.5	0.3	0.3
working plane	0.2	0.2	0.2	0.2	0.2	0.2	0.2	0.2	0.2	0.2
Room dimensions	Viewed crosswise					Viewed endwise				
x = 2H y = 2H	10.5	11.8	10.7	12.0	12.2	10.9	12.3	11.2	12.5	12.7
3H	11.6	12.9	11.9	13.1	13.3	11.8	13.0	12.1	13.2	13.5
4H	12.2	13.4	12.6	13.7	13.9	12.3	13.5	12.6	13.7	14.0
6H	12.8	13.9	13.1	14.2	14.5	12.8	13.9	13.2	14.2	14.5
8H	13.1	14.2	13.4	14.4	14.7	13.0	14.1	13.4	14.4	14.7
12H	13.3	14.4	13.7	14.7	15.0	13.2	14.2	13.6	14.5	14.9
4H 2H	10.7	11.9	11.0	12.2	12.4	11.2	12.3	11.5	12.6	12.8
3H	12.1	13.1	12.5	13.4	13.7	12.4	13.4	12.7	13.7	14.0
4H	12.9	13.8	13.3	14.2	14.5	13.1	14.0	13.5	14.4	14.7
6H	13.7	14.5	14.1	14.9	15.3	13.8	14.7	14.2	15.0	15.4
8H	14.1	14.9	14.5	15.2	15.6	14.1	14.9	14.6	15.3	15.7
12H	14.4	15.1	14.8	15.5	15.9	14.4	15.1	14.8	15.5	15.9
8H 4H	13.2	14.0	13.7	14.4	14.8	13.4	14.2	13.8	14.5	14.9
6H	14.2	14.8	14.7	15.3	15.7	14.3	14.9	14.8	15.4	15.8
8H	14.7	15.3	15.2	15.7	16.2	14.7	15.3	15.2	15.7	16.2
12H	15.2	15.6	15.6	16.1	16.6	15.1	15.6	15.6	16.1	16.6
12H 4H	13.3	14.0	13.7	14.4	14.8	13.4	14.1	13.9	14.5	15.0
6H	14.3	14.9	14.8	15.3	15.8	14.4	15.0	14.9	15.4	15.9
8H	14.9	15.3	15.4	15.8	16.3	14.9	15.4	15.4	15.9	16.3
Variations with the observer position at spacings:										
S = 1.0H	+ 0.4 / - 0.4					+ 0.4 / - 0.5				
1.5H	+ 0.3 / - 0.3					+ 0.2 / - 0.6				
2.0H	+ 0.8 / - 0.7					+ 0.7 / - 1.0				

CIE Pub.117, 3194 lm Total Lamp Luminous Flux Correct (8log(F/F0) = 4.0)

C Range: 0 - 360DEG  
 C Interval: 15.0DEG  
 Test Speed: HIGH  
 Temperature:25.3DEG  
 Operators:QC  
 Test Date:2021-06-04

γ Range: 0 - 180DEG  
 γ Interval: 1.0DEG  
 Test System:EVERFINE GO-2000A\_V1 SYSTEM V2.0.362  
 Humidity:53.0%  
 Test Distance:10.530m [K=1.0000]  
 Remarks:

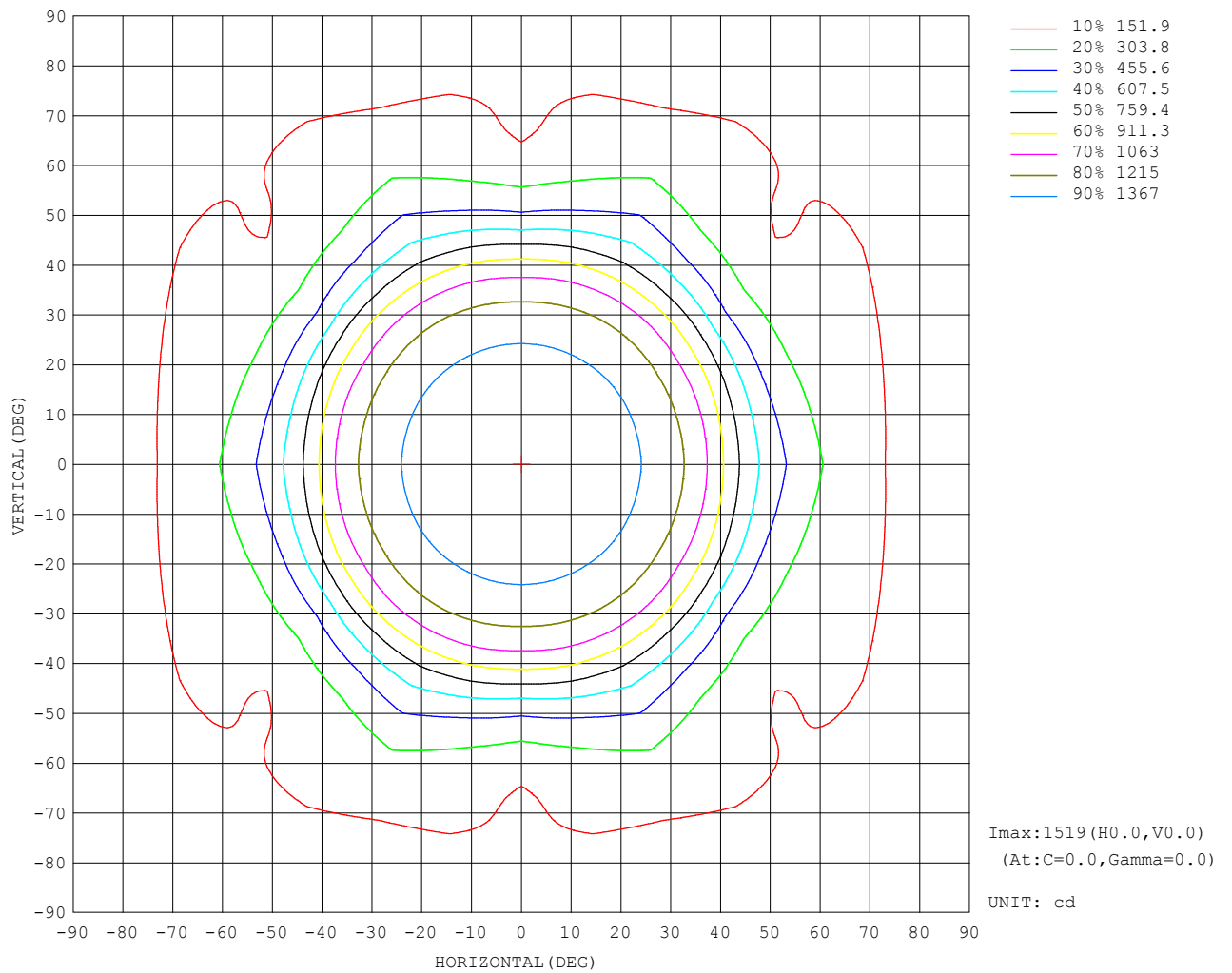
UTILIZATION FACTORS TABLE

REFLECTANCE										
Ceiling	0.8	0.8	0.8	0.7	0.7	0.7	0.5	0.5	0.5	0
Walls	0.7	0.5	0.3	0.7	0.5	0.3	0.7	0.5	0.3	0
Working plane	0.2	0.2	0.2	0.2	0.2	0.2	0.2	0.2	0.2	0
ROOM INDEX	UTILIZATION FACTORS (PERCENT) $k(RI) \times RCR = 5$									
k = 0.60	66	56	50	65	56	50	64	55	50	44
0.80	76	66	60	75	65	59	73	65	59	53
1.00	83	74	68	82	73	67	80	74	67	61
1.25	89	81	75	88	80	74	85	79	73	67
1.50	94	85	80	92	85	79	89	83	78	71
2.00	99	92	87	97	91	86	94	89	84	77
2.50	102	96	91	100	94	90	97	92	88	80
3.00	105	99	95	103	98	93	99	95	91	83
4.00	108	103	99	106	102	98	102	98	95	87
5.00	110	106	103	108	104	101	103	100	98	89
ROOM INDEX	UF (total)									Direct
According to DIN EN 13032-2 2004			Suspended				SHRNOM = 1.25			

C Range: 0 - 360DEG  
 C Interval: 15.0DEG  
 Test Speed: HIGH  
 Temperature: 25.3DEG  
 Operators: QC  
 Test Date: 2021-06-04

$\gamma$  Range: 0 - 180DEG  
 $\gamma$  Interval: 1.0DEG  
 Test System: EVERFINE GO-2000A\_V1 SYSTEM V2.0.362  
 Humidity: 53.0%  
 Test Distance: 10.530m [K=1.0000]  
 Remarks:

ISOCANDELA DIAGRAM

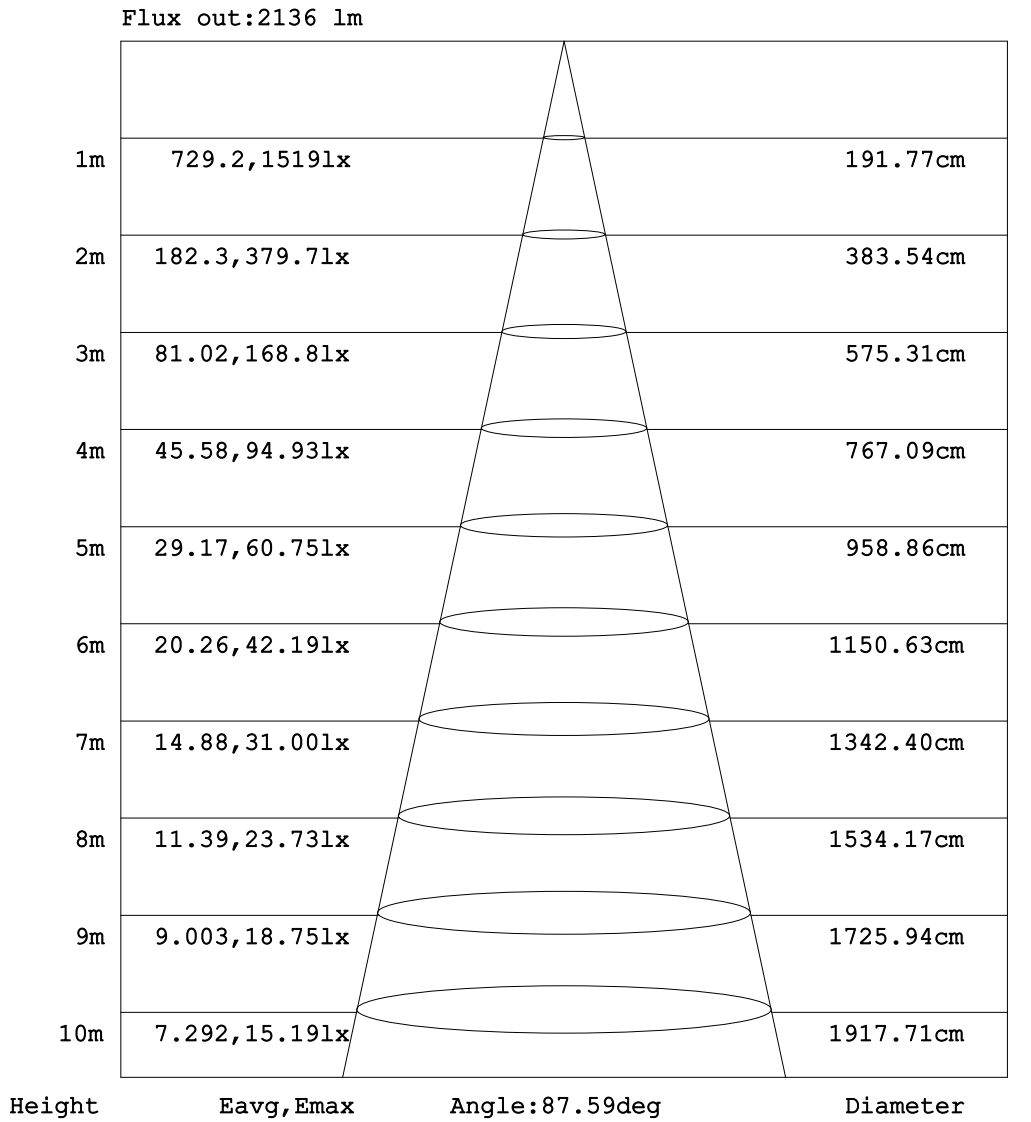


C Range: 0 - 360DEG  
 C Interval: 15.0DEG  
 Test Speed: HIGH  
 Temperature: 25.3DEG  
 Operators: QC  
 Test Date: 2021-06-04

γ Range: 0 - 180DEG  
 γ Interval: 1.0DEG  
 Test System: EVERFINE GO-2000A\_V1 SYSTEM V2.0.362  
 Humidity: 53.0%  
 Test Distance: 10.530m [K=1.0000]  
 Remarks:



AAI Figure

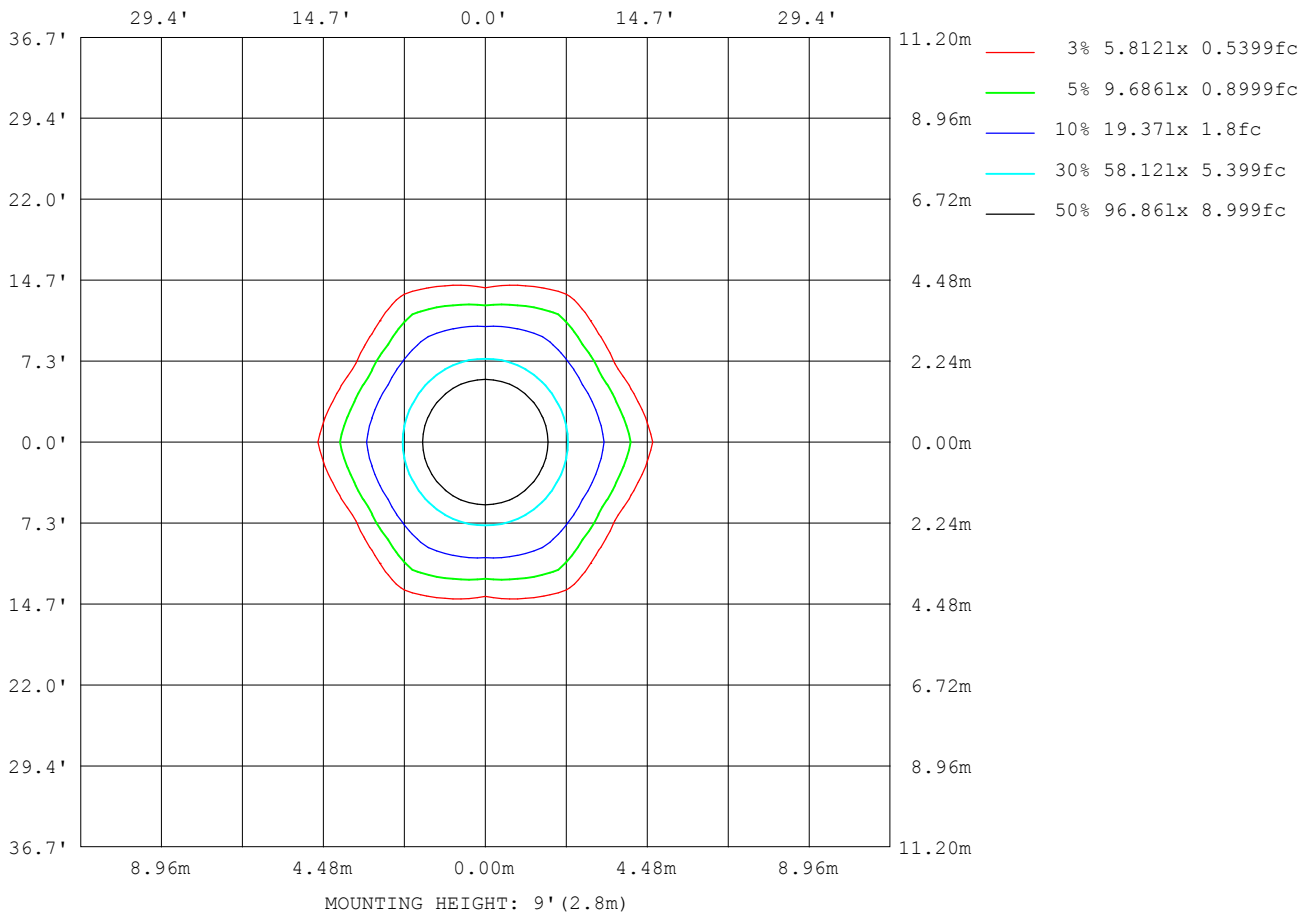


Note: The Curves indicate the illuminated area and the average illumination when the luminaire is at different distance.

C Range: 0 - 360DEG  
 C Interval: 15.0DEG  
 Test Speed: HIGH  
 Temperature: 25.3DEG  
 Operators: QC  
 Test Date: 2021-06-04

γ Range: 0 - 180DEG  
 γ Interval: 1.0DEG  
 Test System: EVERFINE GO-2000A\_V1 SYSTEM V2.0.362  
 Humidity: 53.0%  
 Test Distance: 10.530m [K=1.0000]  
 Remarks:

ISOLUX DIAGRAM



C Range: 0 - 360DEG  
 C Interval: 15.0DEG  
 Test Speed: HIGH  
 Temperature: 25.3DEG  
 Operators: QC  
 Test Date: 2021-06-04

γ Range: 0 - 180DEG  
 γ Interval: 1.0DEG  
 Test System: EVERFINE GO-2000A\_V1 SYSTEM V2.0.362  
 Humidity: 53.0%  
 Test Distance: 10.530m [K=1.0000]  
 Remarks:

**LED Avg.L Report**

Test:U:230.4V I:0.1211A P:26.39W PF:0.9457 Freq:49.99Hz Lamp Flux:3193.7x1 lm		
NAME: P30-30120-4000K	TYPE:	WEIGHT:
SPEC.:	DIM.:	SERIAL No.:
MFR.: TUBI	SUR.:	Shielding Angle:

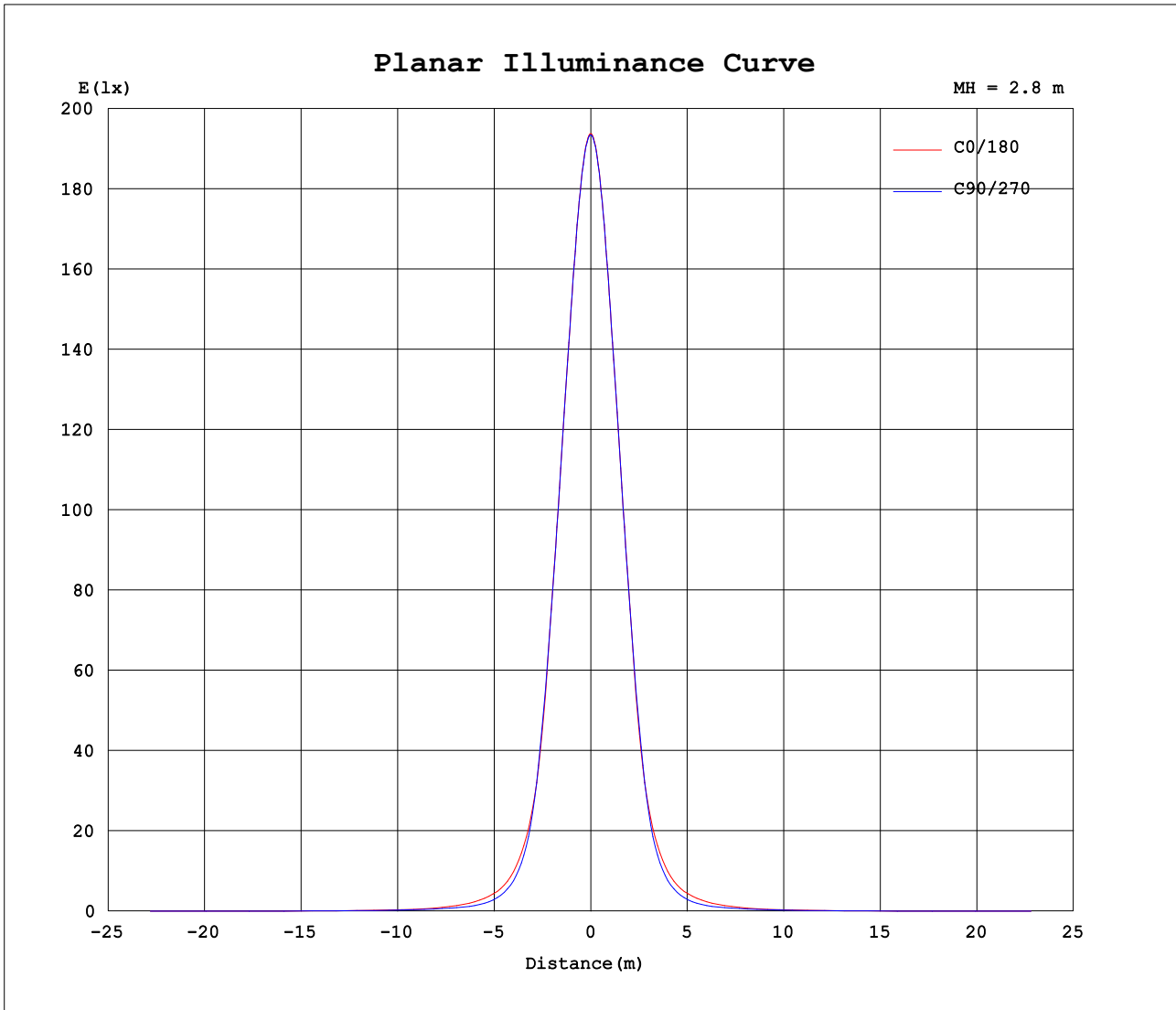
AvgL	cd/m2
L_0~180 (65) av	2012
L_0~180 (75) av	1739
L_0~180 (85) av	2273
L_90~270 (65) av	1204
L_90~270 (75) av	1655
L_90~270 (85) av	1968
L_45 (65) av	1626
L_45 (75) av	1962
L_45 (85) av	2001

Standard: GB/T 29293-2012

C Range: 0 - 360DEG  
 C Interval: 15.0DEG  
 Test Speed: HIGH  
 Temperature:25.3DEG  
 Operators:QC  
 Test Date:2021-06-04

γ Range: 0 - 180DEG  
 γ Interval: 1.0DEG  
 Test System:EVERFINE GO-2000A\_V1 SYSTEM V2.0.362  
 Humidity:53.0%  
 Test Distance:10.530m [K=1.0000]  
 Remarks:

Planar Illuminance Curve



C Range: 0 - 360DEG  
 C Interval: 15.0DEG  
 Test Speed: HIGH  
 Temperature: 25.3DEG  
 Operators: QC  
 Test Date: 2021-06-04

$\gamma$  Range: 0 - 180DEG  
 $\gamma$  Interval: 1.0DEG  
 Test System: EVERFINE GO-2000A\_V1 SYSTEM V2.0.362  
 Humidity: 53.0%  
 Test Distance: 10.530m [K=1.0000]  
 Remarks:

LUMINOUS DISTRIBUTION INTENSITY DATA

Table--1

UNIT: cd

C (DEG) γ (DEG)	0	15	30	45	60	75	90	105	120	135	150	165	180	195	210	225	240	255	270
0	1517	1517	1517	1517	1517	1517	1517	1517	1517	1517	1517	1517	1517	1517	1517	1517	1517	1517	1517
5	1510	1510	1511	1511	1511	1511	1510	1511	1511	1511	1511	1510	1510	1510	1511	1511	1511	1511	1510
10	1491	1491	1491	1492	1492	1492	1492	1492	1492	1492	1491	1491	1491	1491	1491	1492	1492	1492	1492
15	1458	1458	1459	1459	1460	1460	1460	1460	1460	1459	1459	1458	1458	1458	1459	1459	1460	1460	1460
20	1412	1412	1413	1413	1414	1415	1415	1415	1414	1413	1413	1412	1412	1412	1413	1413	1414	1415	1415
25	1353	1352	1353	1354	1354	1356	1356	1356	1354	1354	1353	1352	1353	1352	1353	1354	1354	1356	1356
30	1273	1270	1268	1272	1275	1275	1274	1275	1275	1272	1268	1270	1273	1270	1268	1272	1275	1275	1274
35	1149	1143	1136	1146	1154	1153	1146	1153	1154	1146	1136	1143	1149	1143	1136	1146	1154	1153	1146
40	940	938	930	944	961	973	964	973	961	944	930	938	940	938	930	944	961	973	964
45	708	687	666	694	740	735	712	735	740	694	666	687	708	687	666	694	740	735	712
50	542	480	435	486	564	520	475	520	564	486	435	480	542	480	435	486	564	520	475
55	410	334	288	334	430	366	318	366	430	334	288	334	410	334	288	334	430	366	318
60	311	251	194	245	321	270	212	270	321	245	194	251	311	251	194	245	321	270	212
65	249	212	145	201	256	215	149	215	256	201	145	212	249	212	145	201	256	215	149
70	188	190	142	182	197	187	132	187	197	182	142	190	188	190	142	182	197	187	132
75	132	148	130	149	139	150	126	150	139	149	130	148	132	148	130	149	139	150	126
80	101	103	94.6	99.4	97.3	100	92.6	100	97.3	99.4	94.6	103	101	103	94.6	99.4	97.3	100	92.6
85	58.0	54.8	52.7	51.1	56.0	53.2	50.3	53.2	56.0	51.1	52.7	54.8	58.0	54.8	52.7	51.1	56.0	53.2	50.3
90	1.37	1.45	1.84	1.63	2.20	1.67	1.54	1.67	2.20	1.63	1.84	1.45	1.37	1.45	1.84	1.63	2.20	1.67	1.54
95	1.26	1.26	1.27	1.34	1.40	1.41	1.41	1.41	1.40	1.34	1.27	1.26	1.26	1.26	1.27	1.34	1.40	1.41	1.41
100	1.63	1.64	1.67	1.74	1.79	1.82	1.82	1.82	1.79	1.74	1.67	1.64	1.63	1.64	1.67	1.74	1.79	1.82	1.82
105	2.09	2.11	2.13	2.20	2.26	2.28	2.29	2.28	2.26	2.20	2.13	2.11	2.09	2.11	2.13	2.20	2.26	2.28	2.29
110	2.63	2.63	2.65	2.74	2.78	2.81	2.83	2.81	2.78	2.74	2.65	2.63	2.63	2.63	2.65	2.74	2.78	2.81	2.83
115	3.25	3.24	3.27	3.34	3.37	3.39	3.40	3.39	3.37	3.34	3.27	3.24	3.25	3.24	3.27	3.34	3.37	3.39	3.40
120	3.93	3.93	3.96	4.01	4.02	4.01	4.03	4.01	4.02	4.01	3.96	3.93	3.93	3.93	3.96	4.01	4.02	4.01	4.03
125	4.64	4.69	4.70	4.71	4.69	4.68	4.68	4.68	4.69	4.71	4.70	4.69	4.64	4.69	4.70	4.71	4.69	4.68	4.68
130	5.40	5.46	5.44	5.42	5.39	5.37	5.36	5.37	5.39	5.42	5.44	5.46	5.40	5.46	5.44	5.42	5.39	5.37	5.36
135	6.15	6.19	6.15	6.10	6.10	6.09	6.06	6.09	6.10	6.10	6.15	6.19	6.15	6.19	6.15	6.10	6.10	6.09	6.06
140	6.80	6.83	6.78	6.75	6.78	6.76	6.73	6.76	6.78	6.75	6.78	6.83	6.80	6.83	6.78	6.75	6.78	6.76	6.73
145	7.42	7.42	7.41	7.40	7.46	7.44	7.39	7.44	7.46	7.40	7.41	7.42	7.42	7.42	7.41	7.40	7.46	7.44	7.39
150	8.10	8.06	8.05	8.06	8.14	8.12	8.06	8.12	8.14	8.06	8.05	8.06	8.10	8.06	8.05	8.06	8.14	8.12	8.06
155	8.80	8.75	8.73	8.72	8.83	8.80	8.75	8.80	8.83	8.72	8.73	8.75	8.80	8.75	8.73	8.72	8.83	8.80	8.75
160	9.53	9.46	9.39	9.37	9.45	9.42	9.37	9.42	9.45	9.37	9.39	9.46	9.53	9.46	9.39	9.37	9.45	9.42	9.37
165	10.2	10.1	10.00	9.96	10.0	9.97	9.93	9.97	10.0	9.96	10.00	10.1	10.2	10.1	10.00	9.96	10.0	9.97	9.93
170	10.9	10.7	10.5	10.5	10.5	10.5	10.4	10.5	10.5	10.5	10.5	10.7	10.9	10.7	10.5	10.5	10.5	10.5	10.4
175	11.2	11.1	10.9	10.9	10.8	10.8	10.8	10.8	10.8	10.9	10.9	11.1	11.2	11.1	10.9	10.9	10.8	10.8	10.8
180	11.3	11.2	11.1	11.0	11.0	11.0	10.9	11.0	11.0	11.0	11.1	11.2	11.3	11.2	11.1	11.0	11.0	11.0	10.9

C Range: 0 - 360DEG  
 C Interval: 15.0DEG  
 Test Speed: HIGH  
 Temperature:25.3DEG  
 Operators:QC  
 Test Date:2021-06-04

γ Range: 0 - 180DEG  
 γ Interval: 1.0DEG  
 Test System:EVERFINE GO-2000A\_V1 SYSTEM V2.0.362  
 Humidity:53.0%  
 Test Distance:10.530m [K=1.0000]  
 Remarks:

LUMINOUS DISTRIBUTION INTENSITY DATA

Table--2

UNIT: cd

C (DEG) γ (DEG)	285	300	315	330	345															
0	1517	1517	1517	1517	1517															
5	1511	1511	1511	1511	1510															
10	1492	1492	1492	1491	1491															
15	1460	1460	1459	1459	1458															
20	1415	1414	1413	1413	1412															
25	1356	1354	1354	1353	1352															
30	1275	1275	1272	1268	1270															
35	1153	1154	1146	1136	1143															
40	973	961	944	930	938															
45	735	740	694	666	687															
50	520	564	486	435	480															
55	366	430	334	288	334															
60	270	321	245	194	251															
65	215	256	201	145	212															
70	187	197	182	142	190															
75	150	139	149	130	148															
80	100	97.3	99.4	94.6	103															
85	53.2	56.0	51.1	52.7	54.8															
90	1.67	2.20	1.63	1.84	1.45															
95	1.41	1.40	1.34	1.27	1.26															
100	1.82	1.79	1.74	1.67	1.64															
105	2.28	2.26	2.20	2.13	2.11															
110	2.81	2.78	2.74	2.65	2.63															
115	3.39	3.37	3.34	3.27	3.24															
120	4.01	4.02	4.01	3.96	3.93															
125	4.68	4.69	4.71	4.70	4.69															
130	5.37	5.39	5.42	5.44	5.46															
135	6.09	6.10	6.10	6.15	6.19															
140	6.76	6.78	6.75	6.78	6.83															
145	7.44	7.46	7.40	7.41	7.42															
150	8.12	8.14	8.06	8.05	8.06															
155	8.80	8.83	8.72	8.73	8.75															
160	9.42	9.45	9.37	9.39	9.46															
165	9.97	10.0	9.96	10.00	10.1															
170	10.5	10.5	10.5	10.5	10.7															
175	10.8	10.8	10.9	10.9	11.1															
180	11.0	11.0	11.0	11.1	11.2															

C Range: 0 - 360DEG  
 C Interval: 15.0DEG  
 Test Speed: HIGH  
 Temperature:25.3DEG  
 Operators:QC  
 Test Date:2021-06-04

γ Range: 0 - 180DEG  
 γ Interval: 1.0DEG  
 Test System:EVERFINE GO-2000A\_V1 SYSTEM V2.0.362  
 Humidity:53.0%  
 Test Distance:10.530m [K=1.0000]  
 Remarks:

Photometric Data Table [cd]

G/C	0.0	15.0	30.0	45.0	60.0	75.0	90.0	105.0	120.0	135.0
0.0	1517	1517	1517	1517	1517	1517	1517	1517	1517	1517
3.0	1515	1514	1514	1515	1515	1515	1514	1515	1515	1515
6.0	1508	1508	1508	1508	1508	1508	1508	1508	1508	1508
9.0	1496	1496	1496	1496	1497	1497	1496	1497	1497	1496
12.0	1480	1480	1480	1480	1481	1481	1481	1481	1481	1480
15.0	1458	1458	1459	1459	1460	1460	1460	1460	1460	1459
18.0	1432	1432	1433	1433	1434	1435	1435	1435	1434	1433
21.0	1402	1401	1403	1403	1403	1404	1405	1404	1403	1403
24.0	1366	1365	1367	1367	1367	1369	1370	1369	1367	1367
27.0	1324	1322	1323	1324	1325	1327	1327	1327	1325	1324
30.0	1273	1270	1268	1272	1275	1275	1274	1275	1275	1272
33.0	1206	1201	1197	1203	1209	1208	1204	1208	1209	1203
36.0	1115	1108	1100	1112	1121	1121	1114	1121	1121	1112
39.0	987.7	985.3	976.5	990.6	1004	1014	1005	1014	1004	990.6
42.0	841.7	835.4	830.9	842.7	871.2	881.1	870.7	881.1	871.2	842.7
45.0	707.9	686.6	665.5	693.6	739.8	734.7	711.5	734.7	739.8	693.6
48.0	601.0	555.8	513.7	562.5	627.0	599.6	559.0	599.6	627.0	562.5
51.0	514.2	445.3	399.7	450.1	535.7	484.6	439.6	484.6	535.7	450.1
54.0	435.3	357.1	313.2	358.5	456.0	391.3	344.3	391.3	456.0	358.5
57.0	363.1	294.0	244.6	292.1	381.7	322.1	270.6	322.1	381.7	292.1
60.0	310.7	251.4	193.6	244.7	320.9	270.0	212.2	270.0	320.9	244.7
63.0	273.7	224.3	158.9	214.6	278.5	232.8	168.7	232.8	278.5	214.6
66.0	237.1	207.5	141.5	196.6	245.6	208.7	142.3	208.7	245.6	196.6
69.0	200.1	195.3	141.4	185.8	209.6	191.9	132.8	191.9	209.6	185.8
72.0	163.7	175.6	141.7	172.2	172.9	174.4	130.8	174.4	172.9	172.2
75.0	131.8	148.1	129.6	148.8	139.0	149.6	125.5	149.6	139.0	148.8
78.0	110.2	119.9	110.6	119.4	110.9	119.8	108.1	119.8	110.9	119.4
81.0	95.14	94.40	86.34	89.99	91.26	90.95	84.38	90.95	91.26	89.99
84.0	69.25	65.75	62.59	61.69	66.96	63.96	59.52	63.96	66.96	61.69
87.0	33.44	32.30	30.52	29.49	31.40	30.02	28.36	30.02	31.40	29.49
90.0	1.368	1.454	1.840	1.632	2.195	1.665	1.541	1.665	2.195	1.632
93.0	1.131	1.137	1.143	1.200	1.258	1.266	1.255	1.266	1.258	1.200
96.0	1.326	1.327	1.345	1.410	1.463	1.490	1.490	1.490	1.463	1.410
99.0	1.551	1.557	1.580	1.652	1.708	1.734	1.729	1.734	1.708	1.652
102.0	1.810	1.822	1.849	1.915	1.971	2.000	2.004	2.000	1.971	1.915
105.0	2.095	2.108	2.129	2.197	2.256	2.278	2.289	2.278	2.256	2.197
108.0	2.412	2.414	2.430	2.512	2.563	2.584	2.603	2.584	2.563	2.512
111.0	2.749	2.745	2.767	2.849	2.892	2.917	2.940	2.917	2.892	2.849
114.0	3.121	3.108	3.143	3.212	3.247	3.263	3.288	3.263	3.247	3.212
117.0	3.513	3.504	3.532	3.597	3.628	3.635	3.645	3.635	3.628	3.597
120.0	3.932	3.934	3.959	4.006	4.016	4.014	4.025	4.014	4.016	4.006
123.0	4.359	4.377	4.398	4.426	4.423	4.415	4.409	4.415	4.423	4.426
126.0	4.804	4.839	4.848	4.848	4.833	4.822	4.813	4.822	4.833	4.848
129.0	5.253	5.300	5.297	5.276	5.256	5.234	5.223	5.234	5.256	5.276
132.0	5.706	5.758	5.731	5.691	5.681	5.664	5.651	5.664	5.681	5.691
135.0	6.146	6.186	6.149	6.101	6.103	6.087	6.063	6.087	6.103	6.101
138.0	6.543	6.582	6.538	6.497	6.512	6.499	6.473	6.499	6.512	6.497
141.0	6.928	6.943	6.912	6.881	6.914	6.901	6.867	6.901	6.914	6.881
144.0	7.302	7.293	7.275	7.265	7.317	7.305	7.259	7.305	7.317	7.265
147.0	7.682	7.668	7.659	7.659	7.730	7.713	7.659	7.713	7.730	7.659
150.0	8.098	8.060	8.051	8.059	8.142	8.120	8.058	8.120	8.142	8.059
153.0	8.514	8.470	8.456	8.457	8.553	8.532	8.468	8.532	8.553	8.457
156.0	8.945	8.903	8.865	8.855	8.962	8.934	8.882	8.934	8.962	8.855
159.0	9.380	9.327	9.262	9.241	9.334	9.308	9.258	9.308	9.334	9.241
162.0	9.817	9.729	9.646	9.612	9.686	9.652	9.616	9.652	9.686	9.612
165.0	10.23	10.12	10.000	9.961	10.00	9.971	9.935	9.971	10.00	9.961
168.0	10.62	10.48	10.33	10.29	10.29	10.27	10.24	10.27	10.29	10.29
171.0	10.98	10.79	10.63	10.58	10.56	10.55	10.50	10.55	10.56	10.58
174.0	11.18	11.02	10.85	10.80	10.79	10.76	10.70	10.76	10.79	10.80
177.0	11.29	11.17	10.99	10.94	10.90	10.89	10.84	10.89	10.90	10.94
180.0	11.32	11.22	11.07	11.01	10.99	10.96	10.90	10.96	10.99	11.01
G/C	150.0	165.0	180.0	195.0	210.0	225.0	240.0	255.0	270.0	285.0
0.0	1517	1517	1517	1517	1517	1517	1517	1517	1517	1517
3.0	1514	1514	1515	1514	1514	1515	1515	1515	1514	1515
6.0	1508	1508	1508	1508	1508	1508	1508	1508	1508	1508
9.0	1496	1496	1496	1496	1496	1496	1497	1497	1496	1497
12.0	1480	1480	1480	1480	1480	1480	1481	1481	1481	1481
15.0	1459	1458	1458	1458	1459	1460	1460	1460	1460	1460
18.0	1433	1432	1432	1432	1433	1433	1434	1435	1435	1435
21.0	1403	1401	1402	1401	1403	1403	1403	1404	1405	1404
24.0	1367	1365	1366	1366	1367	1367	1367	1369	1370	1369
27.0	1323	1322	1324	1322	1323	1324	1325	1327	1327	1327
30.0	1268	1270	1273	1270	1268	1272	1275	1275	1274	1275

C Range: 0 - 360DEG  
 C Interval: 15.0DEG  
 Test Speed: HIGH  
 Temperature:25.3DEG  
 Operators:QC  
 Test Date:2021-06-04

γ Range: 0 - 180DEG  
 γ Interval: 1.0DEG  
 Test System:EVERFINE GO-2000A\_V1 SYSTEM V2.0.362  
 Humidity:53.0%  
 Test Distance:10.530m [K=1.0000]  
 Remarks:

Photometric Data Table [cd]

33.0	1197	1201	1206	1201	1197	1203	1209	1208	1204	1208
36.0	1100	1108	1115	1108	1100	1112	1121	1121	1114	1121
39.0	976.5	985.3	987.7	985.3	976.5	990.6	1004	1014	1005	1014
42.0	830.9	835.4	841.7	835.4	830.9	842.7	871.2	881.1	870.7	881.1
45.0	665.5	686.6	707.9	686.6	665.5	693.6	739.8	734.7	711.5	734.7
48.0	513.7	555.8	601.0	555.8	513.7	562.5	627.0	599.6	559.0	599.6
51.0	399.7	445.3	514.2	445.3	399.7	450.1	535.7	484.6	439.6	484.6
54.0	313.2	357.1	435.3	357.1	313.2	358.5	456.0	391.3	344.3	391.3
57.0	244.6	294.0	363.1	294.0	244.6	292.1	381.7	322.1	270.6	322.1
60.0	193.6	251.4	310.7	251.4	193.6	244.7	320.9	270.0	212.2	270.0
63.0	158.9	224.3	273.7	224.3	158.9	214.6	278.5	232.8	168.7	232.8
66.0	141.5	207.5	237.1	207.5	141.5	196.6	245.6	208.7	142.3	208.7
69.0	141.4	195.3	200.1	195.3	141.4	185.8	209.6	191.9	132.8	191.9
72.0	141.7	175.6	163.7	175.6	141.7	172.2	172.9	174.4	130.8	174.4
75.0	129.6	148.1	131.8	148.1	129.6	148.8	139.0	149.6	125.5	149.6
78.0	110.6	119.9	110.2	119.9	110.6	119.4	119.9	119.8	108.1	119.8
81.0	86.34	94.40	95.14	94.40	86.34	89.99	91.26	90.95	84.38	90.95
84.0	62.59	65.75	69.25	65.75	62.59	61.69	66.96	63.96	59.52	63.96
87.0	30.52	32.30	33.44	32.30	30.52	29.49	31.40	30.02	28.36	30.02
90.0	1.840	1.454	1.368	1.454	1.840	1.632	2.195	1.665	1.541	1.665
93.0	1.143	1.137	1.131	1.137	1.143	1.200	1.258	1.266	1.255	1.266
96.0	1.345	1.327	1.326	1.327	1.345	1.410	1.463	1.490	1.490	1.490
99.0	1.580	1.557	1.551	1.557	1.580	1.652	1.708	1.734	1.729	1.734
102.0	1.849	1.822	1.810	1.822	1.849	1.915	1.971	2.000	2.004	2.000
105.0	2.129	2.108	2.095	2.108	2.129	2.197	2.256	2.278	2.289	2.278
108.0	2.430	2.414	2.412	2.414	2.430	2.512	2.563	2.584	2.603	2.584
111.0	2.767	2.745	2.749	2.745	2.767	2.849	2.892	2.917	2.940	2.917
114.0	3.143	3.108	3.121	3.108	3.143	3.212	3.247	3.263	3.288	3.263
117.0	3.532	3.504	3.513	3.504	3.532	3.597	3.628	3.635	3.645	3.635
120.0	3.959	3.934	3.932	3.934	3.959	4.006	4.016	4.014	4.025	4.014
123.0	4.398	4.377	4.359	4.377	4.398	4.426	4.423	4.415	4.409	4.415
126.0	4.848	4.839	4.804	4.839	4.848	4.848	4.833	4.822	4.813	4.822
129.0	5.297	5.300	5.253	5.300	5.297	5.276	5.256	5.234	5.223	5.234
132.0	5.731	5.758	5.706	5.758	5.731	5.691	5.681	5.664	5.651	5.664
135.0	6.149	6.186	6.146	6.186	6.149	6.101	6.103	6.087	6.063	6.087
138.0	6.538	6.582	6.543	6.582	6.538	6.497	6.512	6.499	6.473	6.499
141.0	6.912	6.943	6.928	6.943	6.912	6.881	6.914	6.901	6.867	6.901
144.0	7.275	7.293	7.302	7.293	7.275	7.265	7.317	7.305	7.259	7.305
147.0	7.659	7.668	7.682	7.668	7.659	7.659	7.730	7.713	7.659	7.713
150.0	8.051	8.060	8.098	8.060	8.051	8.059	8.142	8.120	8.058	8.120
153.0	8.456	8.470	8.514	8.470	8.456	8.457	8.553	8.532	8.468	8.532
156.0	8.865	8.903	8.945	8.903	8.865	8.855	8.962	8.934	8.882	8.934
159.0	9.262	9.327	9.380	9.327	9.262	9.241	9.334	9.308	9.258	9.308
162.0	9.646	9.729	9.817	9.729	9.646	9.612	9.686	9.652	9.616	9.652
165.0	10.000	10.12	10.23	10.12	10.000	9.961	10.00	9.971	9.935	9.971
168.0	10.33	10.48	10.62	10.48	10.33	10.29	10.29	10.27	10.24	10.27
171.0	10.63	10.79	10.98	10.79	10.63	10.58	10.56	10.55	10.50	10.55
174.0	10.85	11.02	11.18	11.02	10.85	10.80	10.79	10.76	10.70	10.76
177.0	10.99	11.17	11.29	11.17	10.99	10.94	10.90	10.89	10.84	10.89
180.0	11.07	11.22	11.32	11.22	11.07	11.01	10.99	10.96	10.90	10.96
G/C	300.0	315.0	330.0	345.0						
0.0	1517	1517	1517	1517						
3.0	1515	1515	1514	1514						
6.0	1508	1508	1508	1508						
9.0	1497	1496	1496	1496						
12.0	1481	1480	1480	1480						
15.0	1460	1459	1459	1458						
18.0	1434	1433	1433	1432						
21.0	1403	1403	1403	1401						
24.0	1367	1367	1367	1365						
27.0	1325	1324	1323	1322						
30.0	1275	1272	1268	1270						
33.0	1209	1203	1197	1201						
36.0	1121	1112	1100	1108						
39.0	1004	990.6	976.5	985.3						
42.0	871.2	842.7	830.9	835.4						
45.0	739.8	693.6	665.5	686.6						
48.0	627.0	562.5	513.7	555.8						
51.0	535.7	450.1	399.7	445.3						
54.0	456.0	358.5	313.2	357.1						
57.0	381.7	292.1	244.6	294.0						
60.0	320.9	244.7	193.6	251.4						
63.0	278.5	214.6	158.9	224.3						
66.0	245.6	196.6	141.5	207.5						

C Range: 0 - 360DEG  
 C Interval: 15.0DEG  
 Test Speed: HIGH  
 Temperature:25.3DEG  
 Operators:QC  
 Test Date:2021-06-04

γ Range: 0 - 180DEG  
 γ Interval: 1.0DEG  
 Test System:EVERFINE GO-2000A\_V1 SYSTEM V2.0.362  
 Humidity:53.0%  
 Test Distance:10.530m [K=1.0000]  
 Remarks:



## Photometric Data Table [cd]

69.0	209.6	185.8	141.4	195.3
72.0	172.9	172.2	141.7	175.6
75.0	139.0	148.8	129.6	148.1
78.0	110.9	119.4	110.6	119.9
81.0	91.26	89.99	86.34	94.40
84.0	66.96	61.69	62.59	65.75
87.0	31.40	29.49	30.52	32.30
90.0	2.195	1.632	1.840	1.454
93.0	1.258	1.200	1.143	1.137
96.0	1.463	1.410	1.345	1.327
99.0	1.708	1.652	1.580	1.557
102.0	1.971	1.915	1.849	1.822
105.0	2.256	2.197	2.129	2.108
108.0	2.563	2.512	2.430	2.414
111.0	2.892	2.849	2.767	2.745
114.0	3.247	3.212	3.143	3.108
117.0	3.628	3.597	3.532	3.504
120.0	4.016	4.006	3.959	3.934
123.0	4.423	4.426	4.398	4.377
126.0	4.833	4.848	4.848	4.839
129.0	5.256	5.276	5.297	5.300
132.0	5.681	5.691	5.731	5.758
135.0	6.103	6.101	6.149	6.186
138.0	6.512	6.497	6.538	6.582
141.0	6.914	6.881	6.912	6.943
144.0	7.317	7.265	7.275	7.293
147.0	7.730	7.659	7.659	7.668
150.0	8.142	8.059	8.051	8.060
153.0	8.553	8.457	8.456	8.470
156.0	8.962	8.855	8.865	8.903
159.0	9.334	9.241	9.262	9.327
162.0	9.686	9.612	9.646	9.729
165.0	10.00	9.961	10.000	10.12
168.0	10.29	10.29	10.33	10.48
171.0	10.56	10.58	10.63	10.79
174.0	10.79	10.80	10.85	11.02
177.0	10.90	10.94	10.99	11.17
180.0	10.99	11.01	11.07	11.22

C Range: 0 - 360DEG  
 C Interval: 15.0DEG  
 Test Speed: HIGH  
 Temperature:25.3DEG  
 Operators:QC  
 Test Date:2021-06-04

γ Range: 0 - 180DEG  
 γ Interval: 1.0DEG  
 Test System:EVERFINE GO-2000A\_V1 SYSTEM V2.0.362  
 Humidity:53.0%  
 Test Distance:10.530m [K=1.0000]  
 Remarks: