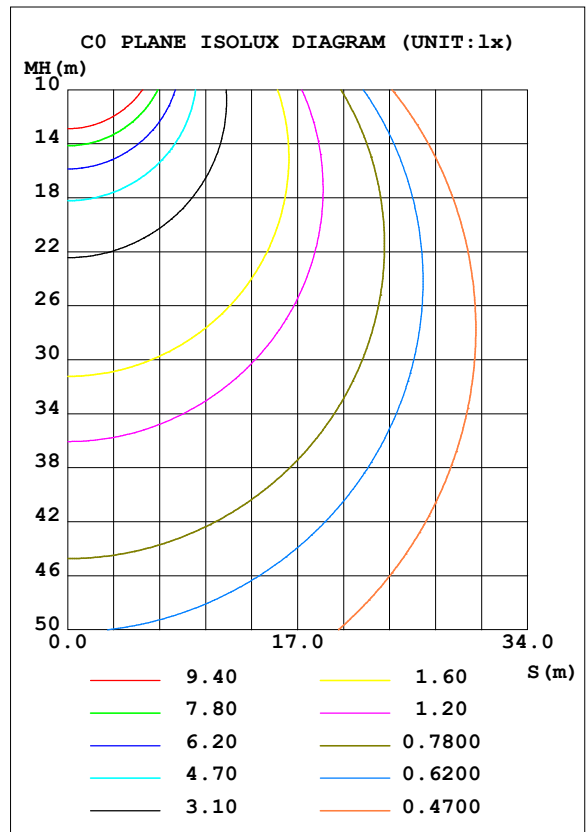
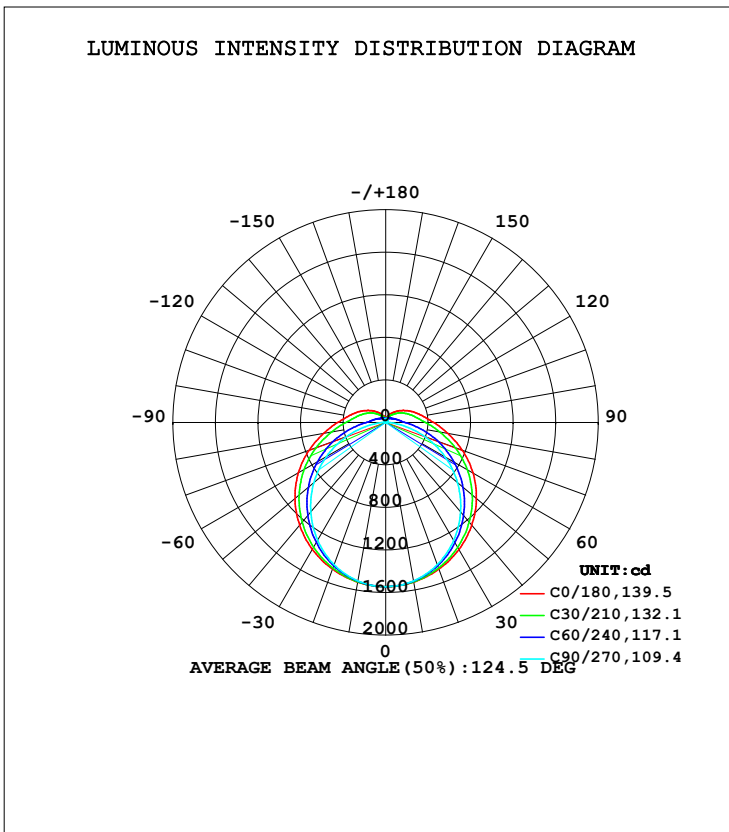


LUMINAIRE PHOTOMETRIC TEST REPORT

Test:U:230.5V I:0.1564A P:34.43W PF:0.9555 Freq:49.99Hz Lamp Flux:6069.06x1 lm		
NAME: TB33-34-1500K-40H-R8	TYPE:	WEIGHT:
SPEC.:	DIM.:	SERIAL No.:
MFR.: ERVAN	SUR.:	Shielding Angle:

DATA OF LAMP		PHOTOMETRIC DATA Eff: 176.25 lm/W			
MODEL		I _{max} (cd)	1544	S/MH (C0/180)	1.33
NOMINAL POWER (W)	34	LOR (%)	100.0	S/MH (C90/270)	1.24
RATED VOLTAGE (V)	230	TOTAL FLUX (lm)	6069.1	η UP, DN (C0-180)	6.8, 43.2
NOMINAL FLUX (lm)	6069.06	CIE CLASS	SEMI-D.	η UP, DN (C180-360)	6.8, 43.2
LAMPS INSIDE	1	η up (%)	13.7	CIBSE SHR NOM	1.50
TEST VOLTAGE (V)	230	η down (%)	86.3	CIBSE SHR MAX	1.50



C Range: 0 - 360DEG
 C Interval: 15.0DEG
 Test Speed: HIGH
 Temperature: 25.3DEG
 Operators: QC
 Test Date: 2021-11-22

γ Range: 0 - 180DEG
 γ Interval: 1.0DEG
 Test System: EVERFINE GO-2000A_V1 SYSTEM V2.0.362
 Humidity: 53.0%
 Test Distance: 10.530m [K=1.0000]
 Remarks:

ZONAL FLUX DIAGRAM

ZONAL FLUX DIAGRAM:

γ	C0	C45	C90	C135	C180	C225	C270	C315	γ	Φ zone	Φ total	%lum, lamp
10	1524	1519	1513	1519	1524	1519	1513	1519	0- 10	146.2	146.2	2.41,2.41
20	1467	1445	1423	1445	1467	1445	1423	1445	10- 20	420.0	566.2	9.33,9.33
30	1379	1330	1281	1330	1379	1330	1281	1330	20- 30	642.1	1208	19.9,19.9
40	1260	1183	1097	1183	1260	1183	1097	1183	30- 40	788.4	1997	32.9,32.9
50	1114	1010	882.2	1010	1114	1010	882.2	1010	40- 50	845.5	2842	46.8,46.8
60	948.2	818.2	643.9	818.2	948.2	818.2	643.9	818.2	50- 60	812.1	3654	60.2,60.2
70	767.8	618.9	392.9	618.9	767.8	618.9	392.9	618.9	60- 70	698.7	4353	71.7,71.7
80	592.8	427.6	151.5	427.6	592.8	427.6	151.5	427.6	70- 80	529.0	4882	80.4,80.4
90	452.7	289.9	5.853	289.9	452.7	289.9	5.853	289.9	80- 90	356.8	5239	86.3,86.3
100	354.6	216.7	8.547	216.7	354.6	216.7	8.547	216.7	90-100	249.6	5488	90.4,90.4
110	286.6	169.7	9.349	169.7	286.6	169.7	9.349	169.7	100-110	189.8	5678	93.6,93.6
120	226.0	128.0	13.01	128.0	226.0	128.0	13.01	128.0	110-120	141.4	5820	95.9,95.9
130	174.6	96.59	16.82	96.59	174.6	96.59	16.82	96.59	120-130	100.2	5920	97.5,97.5
140	131.2	74.40	21.20	74.40	131.2	74.40	21.20	74.40	130-140	67.15	5987	98.6,98.6
150	95.09	58.04	26.61	58.04	95.09	58.04	26.61	58.04	140-150	42.50	6029	99.3,99.3
160	65.89	46.51	31.37	46.51	65.89	46.51	31.37	46.51	150-160	24.34	6054	99.7,99.7
170	41.95	38.03	34.68	38.03	41.95	38.03	34.68	38.03	160-170	11.92	6066	99.9,99.9
180	25.73	36.34	36.72	36.34	25.73	36.34	36.72	36.34	170-180	3.445	6069	100,100
DEG	LUMINOUS INTENSITY:cd									UNIT:lm		

Conical surface Flux(90deg): 2418 lm

%lum = 39.8%
%lamp = 39.8%

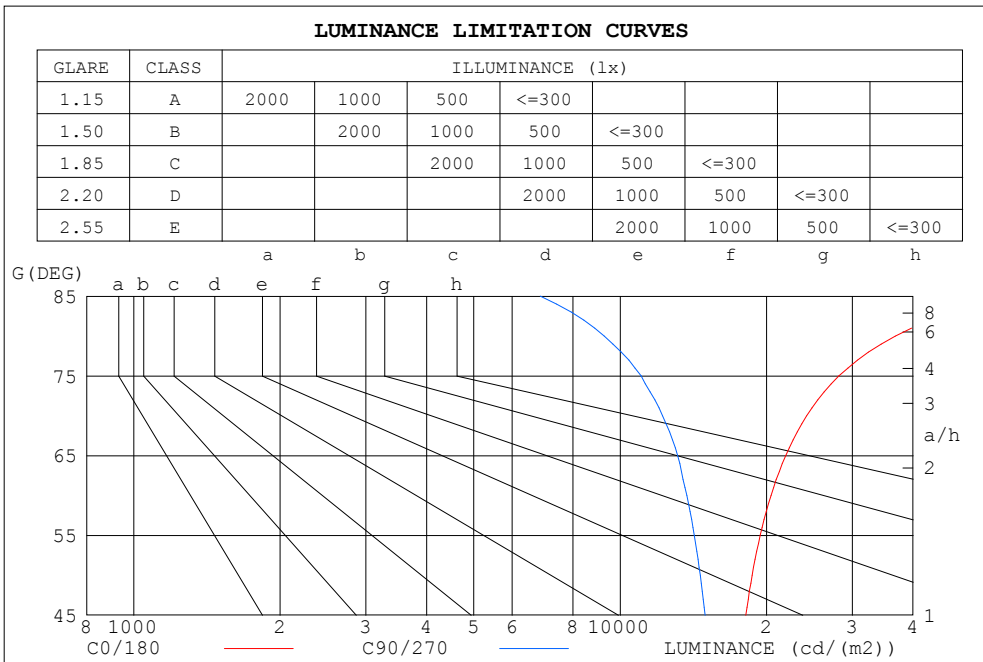
Conical surface Flux(120deg): 3654.2 lm

%lum = 60.2%
%lamp = 60.2%

C Range: 0 - 360DEG
C Interval: 15.0DEG
Test Speed: HIGH
Temperature:25.3DEG
Operators:QC
Test Date:2021-11-22

γ Range: 0 - 180DEG
γ Interval: 1.0DEG
Test System:EVERFINE GO-2000A_V1 SYSTEM V2.0.362
Humidity:53.0%
Test Distance:10.530m [K=1.0000]
Remarks:

LUMINANCE LIMITATION CURVES



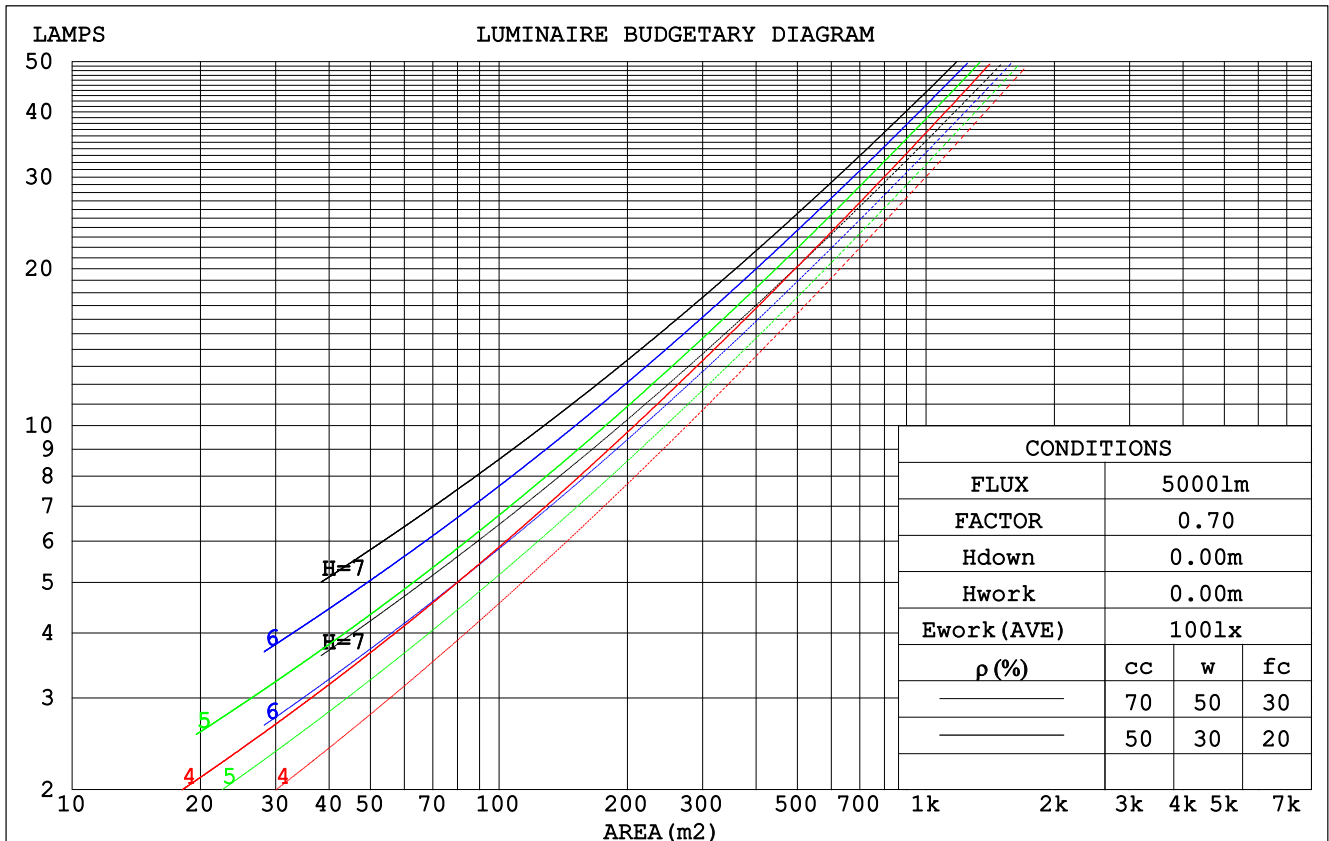
LUMINANCE cd/(m2)		
G (DEG)	C0/180	C90/270
85	63980	6857
80	36769	9284
75	28180	11045
70	24182	12226
65	21899	13133
60	20428	13706
55	19407	14202
50	18676	14607
45	18133	14948

C Range: 0 - 360DEG
 C Interval: 15.0DEG
 Test Speed: HIGH
 Temperature: 25.3DEG
 Operators: QC
 Test Date: 2021-11-22

γ Range: 0 - 180DEG
 γ Interval: 1.0DEG
 Test System: EVERFINE GO-2000A_V1 SYSTEM V2.0.362
 Humidity: 53.0%
 Test Distance: 10.530m [K=1.0000]
 Remarks:

CU AND LUMINAIRE BUDGETARY ESTIMATE DIAGRAM

ρ_{cc}	80%			70%			50%			30%			10%			0
ρ_w	50%	30%	10%	50%	30%	10%	50%	30%	10%	50%	30%	10%	50%	30%	10%	0
ρ_{fc}	20%			20%			20%			20%			20%			0
RCR	RCR:Room Cavity Ratio						Coefficients of Utilization(CU)									
0.0	1.16	1.16	1.16	1.12	1.12	1.12	1.04	1.04	1.04	.96	.96	.96	.89	.89	.89	.86
1.0	.98	.93	.88	.94	.90	.85	.87	.84	.80	.81	.78	.75	.75	.73	.71	.68
2.0	.84	.77	.70	.81	.74	.68	.75	.69	.65	.70	.65	.61	.65	.61	.58	.55
3.0	.73	.64	.57	.71	.62	.56	.66	.59	.53	.61	.55	.51	.57	.52	.48	.45
4.0	.64	.55	.48	.62	.54	.47	.58	.51	.45	.54	.48	.43	.50	.45	.41	.38
5.0	.57	.48	.41	.55	.47	.40	.52	.44	.38	.48	.42	.37	.45	.40	.35	.33
6.0	.51	.42	.36	.50	.41	.35	.46	.39	.33	.43	.37	.32	.41	.35	.31	.28
7.0	.46	.37	.31	.45	.37	.31	.42	.35	.29	.40	.33	.28	.37	.31	.27	.25
8.0	.42	.34	.28	.41	.33	.27	.38	.31	.26	.36	.30	.25	.34	.28	.24	.22
9.0	.39	.30	.25	.37	.30	.24	.35	.28	.23	.33	.27	.23	.31	.26	.22	.20
10.0	.36	.28	.22	.35	.27	.22	.33	.26	.21	.31	.25	.20	.29	.24	.20	.18



C Range: 0 - 360DEG
 C Interval: 15.0DEG
 Test Speed: HIGH
 Temperature:25.3DEG
 Operators:QC
 Test Date:2021-11-22

γ Range: 0 - 180DEG
 γ Interval: 1.0DEG
 Test System:EVERFINE GO-2000A_V1 SYSTEM V2.0.362
 Humidity:53.0%
 Test Distance:10.530m [K=1.0000]
 Remarks:

WEC AND CCEC

pcc	80%			70%			50%			30%			10%			0
pw	50%	30%	10%	50%	30%	10%	50%	30%	10%	50%	30%	10%	50%	30%	10%	0
ρfc	20%			20%			20%			20%			20%			0
RCR	RCR:Room Cavity Ratio						Wall Exitance Coefficients(WEC)									
0.0																
1.0	.363	.207	.065	.352	.201	.064	.331	.190	.061	.311	.179	.058	.293	.170	.055	
2.0	.321	.176	.054	.311	.171	.053	.292	.162	.050	.274	.154	.048	.258	.146	.046	
3.0	.288	.153	.046	.279	.149	.045	.262	.142	.043	.246	.135	.041	.231	.128	.040	
4.0	.261	.136	.040	.253	.132	.039	.237	.126	.038	.223	.120	.036	.209	.114	.035	
5.0	.238	.122	.035	.231	.119	.035	.217	.113	.033	.204	.107	.032	.191	.102	.031	
6.0	.219	.110	.031	.212	.107	.031	.200	.102	.030	.188	.097	.029	.176	.093	.028	
7.0	.203	.100	.028	.197	.098	.028	.185	.093	.027	.174	.089	.026	.164	.085	.025	
8.0	.188	.092	.026	.183	.090	.025	.172	.086	.025	.162	.082	.024	.153	.078	.023	
9.0	.176	.085	.024	.171	.083	.023	.161	.080	.023	.152	.076	.022	.143	.073	.021	
10.0	.165	.079	.022	.160	.077	.022	.151	.074	.021	.142	.071	.020	.134	.068	.019	

pcc	80%			70%			50%			30%			10%			0
pw	50%	30%	10%	50%	30%	10%	50%	30%	10%	50%	30%	10%	50%	30%	10%	0
ρfc	20%			20%			20%			20%			20%			0
RCR	RCR:Room Cavity Ratio						Ceiling Cavity Exitance Coefficients(CCEC)									
0.0	.295	.295	.295	.252	.252	.252	.172	.172	.172	.099	.099	.099	.032	.032	.032	
1.0	.289	.261	.235	.247	.224	.202	.169	.154	.140	.097	.089	.081	.031	.029	.026	
2.0	.282	.238	.200	.241	.205	.173	.165	.141	.121	.095	.082	.071	.031	.027	.023	
3.0	.274	.221	.178	.235	.190	.154	.161	.132	.108	.093	.077	.064	.030	.025	.021	
4.0	.267	.208	.163	.229	.180	.142	.157	.125	.100	.091	.073	.059	.029	.024	.019	
5.0	.259	.198	.153	.222	.171	.133	.153	.120	.094	.089	.070	.056	.029	.023	.018	
6.0	.252	.190	.146	.216	.165	.127	.149	.115	.090	.087	.068	.053	.028	.022	.018	
7.0	.245	.183	.140	.210	.159	.122	.145	.111	.087	.084	.066	.052	.027	.022	.017	
8.0	.238	.178	.136	.205	.154	.119	.142	.108	.084	.083	.064	.050	.027	.021	.017	
9.0	.232	.173	.133	.200	.150	.116	.138	.106	.082	.081	.062	.049	.026	.020	.016	
10.0	.226	.169	.131	.195	.147	.114	.135	.103	.081	.079	.061	.048	.026	.020	.016	

C Range: 0 - 360DEG
 C Interval: 15.0DEG
 Test Speed: HIGH
 Temperature:25.3DEG
 Operators:QC
 Test Date:2021-11-22

γ Range: 0 - 180DEG
 γ Interval: 1.0DEG
 Test System:EVERFINE GO-2000A_V1 SYSTEM V2.0.362
 Humidity:53.0%
 Test Distance:10.530m [K=1.0000]
 Remarks:

UGR(Unified Glare Rating) Table

ceiling/cavity	0.7	0.7	0.5	0.5	0.3	0.7	0.7	0.5	0.5	0.3
walls	0.5	0.3	0.5	0.3	0.3	0.5	0.3	0.5	0.3	0.3
working plane	0.2	0.2	0.2	0.2	0.2	0.2	0.2	0.2	0.2	0.2
Room dimensions	Viewed crosswise					Viewed endwise				
x = 2H y = 2H	16.4	17.8	16.8	18.2	18.7	14.7	16.1	15.2	16.6	17.0
3H	18.7	20.0	19.2	20.5	21.0	16.2	17.5	16.7	17.9	18.5
4H	20.0	21.2	20.5	21.7	22.2	16.7	18.0	17.2	18.5	19.0
6H	21.4	22.5	21.9	23.0	23.6	17.1	18.3	17.6	18.8	19.3
8H	22.1	23.2	22.6	23.7	24.3	17.2	18.3	17.7	18.9	19.4
12H	23.0	24.0	23.5	24.6	25.2	17.3	18.3	17.8	18.9	19.5
4H 2H	16.9	18.1	17.4	18.6	19.2	15.7	16.9	16.2	17.4	18.0
3H	19.5	20.6	20.0	21.1	21.7	17.4	18.5	17.9	19.0	19.6
4H	20.9	21.9	21.5	22.5	23.1	18.1	19.1	18.7	19.7	20.3
6H	22.5	23.4	23.1	24.0	24.6	18.6	19.5	19.2	20.1	20.8
8H	23.4	24.2	24.0	24.8	25.5	18.8	19.6	19.4	20.2	20.9
12H	24.4	25.2	25.0	25.8	26.5	18.9	19.7	19.5	20.3	21.0
8H 4H	21.2	22.1	21.9	22.7	23.3	18.9	19.7	19.5	20.3	21.0
6H	23.1	23.8	23.7	24.4	25.1	19.8	20.5	20.4	21.1	21.8
8H	24.2	24.8	24.8	25.5	26.2	20.1	20.7	20.8	21.4	22.1
12H	25.5	26.0	26.1	26.7	27.4	20.3	20.9	21.0	21.6	22.3
12H 4H	21.3	22.0	21.9	22.6	23.3	19.2	19.9	19.8	20.5	21.2
6H	23.2	23.8	23.9	24.5	25.2	20.2	20.8	20.9	21.5	22.2
8H	24.4	24.9	25.1	25.6	26.4	20.7	21.2	21.4	21.9	22.7
Variations with the observer position at spacings:										
S = 1.0H	+ 0.1 / - 0.1					+ 0.1 / - 0.1				
1.5H	+ 0.2 / - 0.3					+ 0.2 / - 0.3				
2.0H	+ 0.2 / - 0.3					+ 0.2 / - 0.4				

CIE Pub.117, 6069 lm Total Lamp Luminous Flux Correct (8log(F/F0) = 6.3)

C Range: 0 - 360DEG
 C Interval: 15.0DEG
 Test Speed: HIGH
 Temperature:25.3DEG
 Operators:QC
 Test Date:2021-11-22

γ Range: 0 - 180DEG
 γ Interval: 1.0DEG
 Test System:EVERFINE GO-2000A_V1 SYSTEM V2.0.362
 Humidity:53.0%
 Test Distance:10.530m [K=1.0000]
 Remarks:

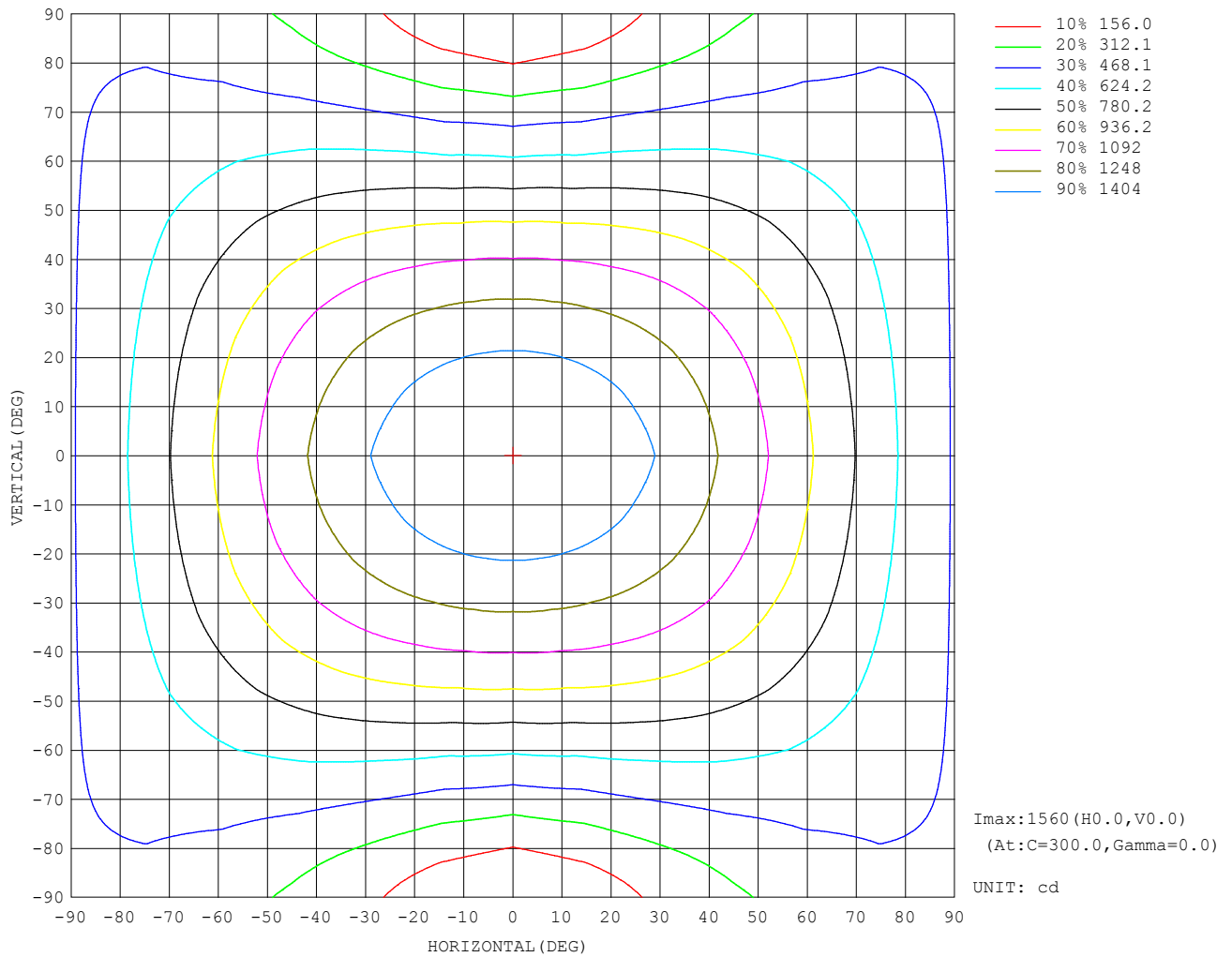
UTILIZATION FACTORS TABLE

REFLECTANCE										
Ceiling	0.8	0.8	0.8	0.7	0.7	0.7	0.5	0.5	0.5	0
Walls	0.7	0.5	0.3	0.7	0.5	0.3	0.7	0.5	0.3	0
Working plane	0.2	0.2	0.2	0.2	0.2	0.2	0.2	0.2	0.2	0
ROOM INDEX	UTILIZATION FACTORS (PERCENT) $k(RI) \times RCR = 5$									
k = 0.60	50	38	31	49	38	31	48	37	30	24
0.80	60	47	39	58	46	39	56	45	38	31
1.00	68	55	47	66	54	47	63	55	46	37
1.25	75	63	54	72	61	54	69	59	52	43
1.50	80	68	60	77	67	59	73	64	57	47
2.00	87	76	69	84	75	67	79	71	65	54
2.50	91	82	74	88	79	73	82	75	70	58
3.00	95	86	79	92	84	77	85	79	74	62
4.00	99	92	86	96	89	84	89	84	79	66
5.00	102	96	90	98	93	88	92	87	83	69
ROOM INDEX	UF (total)									Direct
According to DIN EN 13032-2 2004			Suspended				SHRNOM = 1.25			

C Range: 0 - 360DEG
 C Interval: 15.0DEG
 Test Speed: HIGH
 Temperature: 25.3DEG
 Operators: QC
 Test Date: 2021-11-22

γ Range: 0 - 180DEG
 γ Interval: 1.0DEG
 Test System: EVERFINE GO-2000A_V1 SYSTEM V2.0.362
 Humidity: 53.0%
 Test Distance: 10.530m [K=1.0000]
 Remarks:

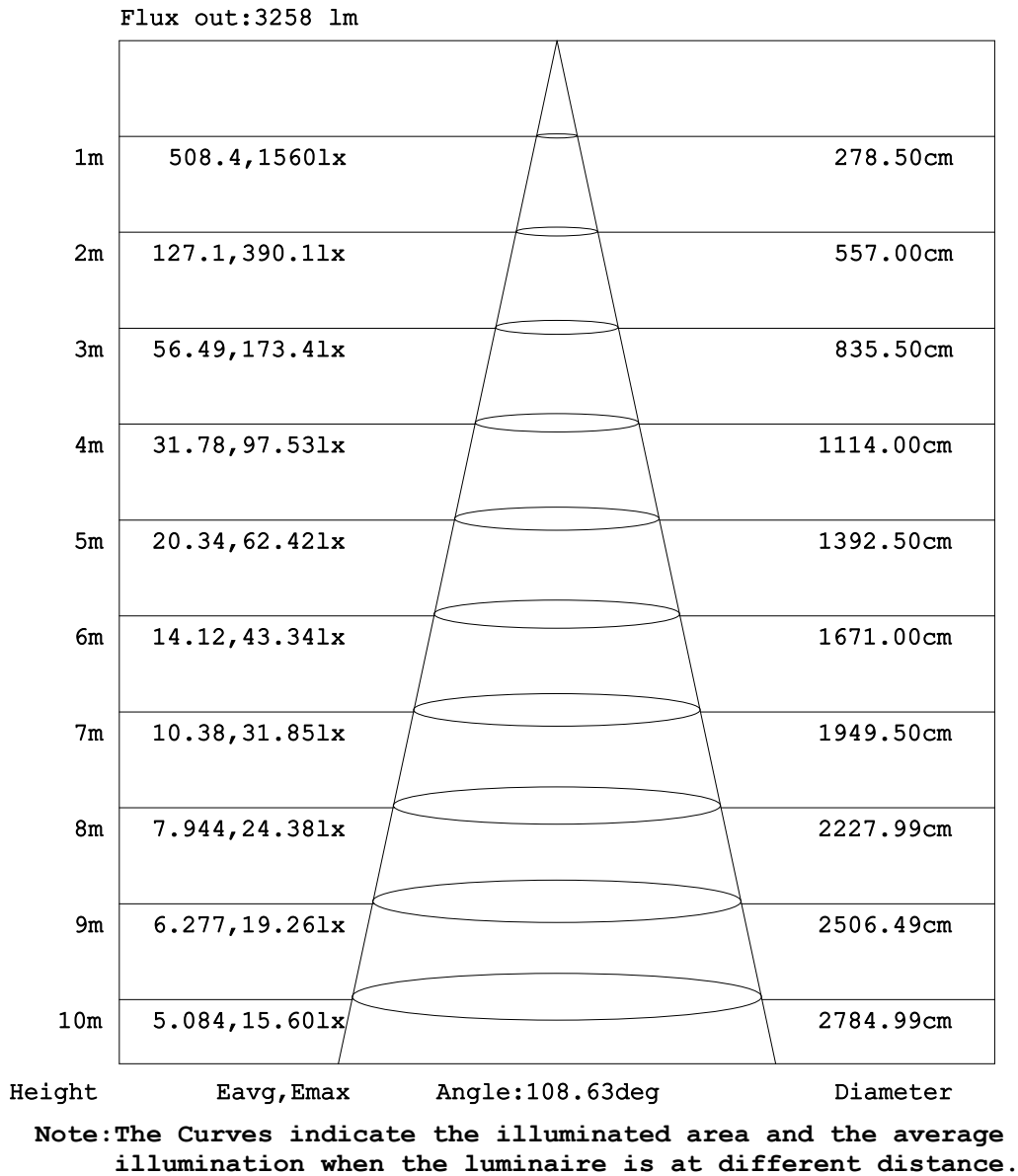
ISOCANDELA DIAGRAM



C Range: 0 - 360DEG
 C Interval: 15.0DEG
 Test Speed: HIGH
 Temperature: 25.3DEG
 Operators: QC
 Test Date: 2021-11-22

γ Range: 0 - 180DEG
 γ Interval: 1.0DEG
 Test System: EVERFINE GO-2000A_V1 SYSTEM V2.0.362
 Humidity: 53.0%
 Test Distance: 10.530m [K=1.0000]
 Remarks:

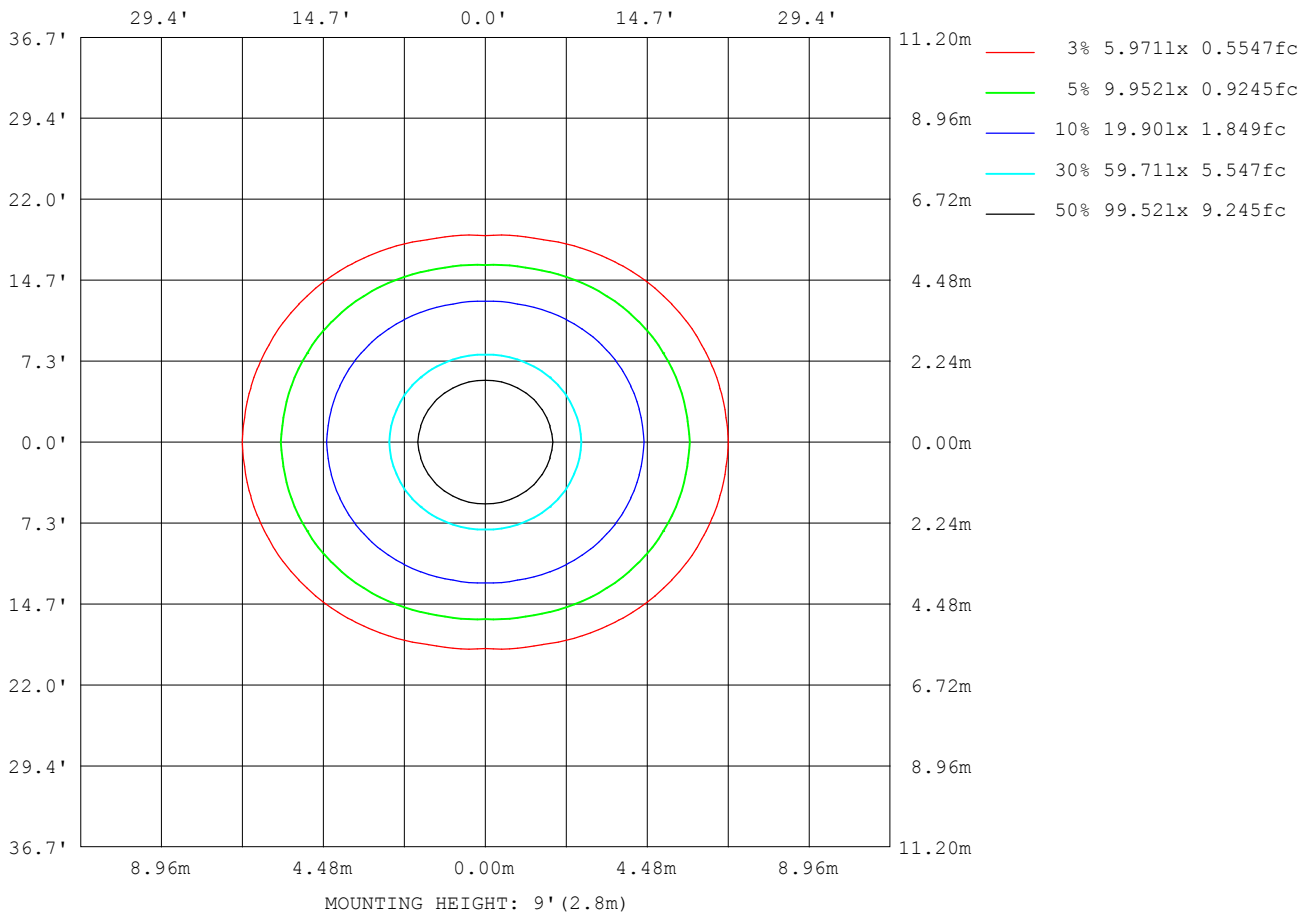
AAI Figure



C Range: 0 - 360DEG
 C Interval: 15.0DEG
 Test Speed: HIGH
 Temperature:25.3DEG
 Operators:QC
 Test Date:2021-11-22

γ Range: 0 - 180DEG
 γ Interval: 1.0DEG
 Test System:EVERFINE GO-2000A_V1 SYSTEM V2.0.362
 Humidity:53.0%
 Test Distance:10.530m [K=1.0000]
 Remarks:

ISOLUX DIAGRAM



C Range: 0 - 360DEG
 C Interval: 15.0DEG
 Test Speed: HIGH
 Temperature: 25.3DEG
 Operators: QC
 Test Date: 2021-11-22

γ Range: 0 - 180DEG
 γ Interval: 1.0DEG
 Test System: EVERFINE GO-2000A_V1 SYSTEM V2.0.362
 Humidity: 53.0%
 Test Distance: 10.530m [K=1.0000]
 Remarks:

LED Avg.L Report

Test:U:230.5V I:0.1564A P:34.43W PF:0.9555 Freq:49.99Hz Lamp Flux:6069.06x1 lm		
NAME: TB33-34-1500K-40H-R8	TYPE:	WEIGHT:
SPEC.:	DIM.:	SERIAL No.:
MFR.: ERVAN	SUR.:	Shielding Angle:

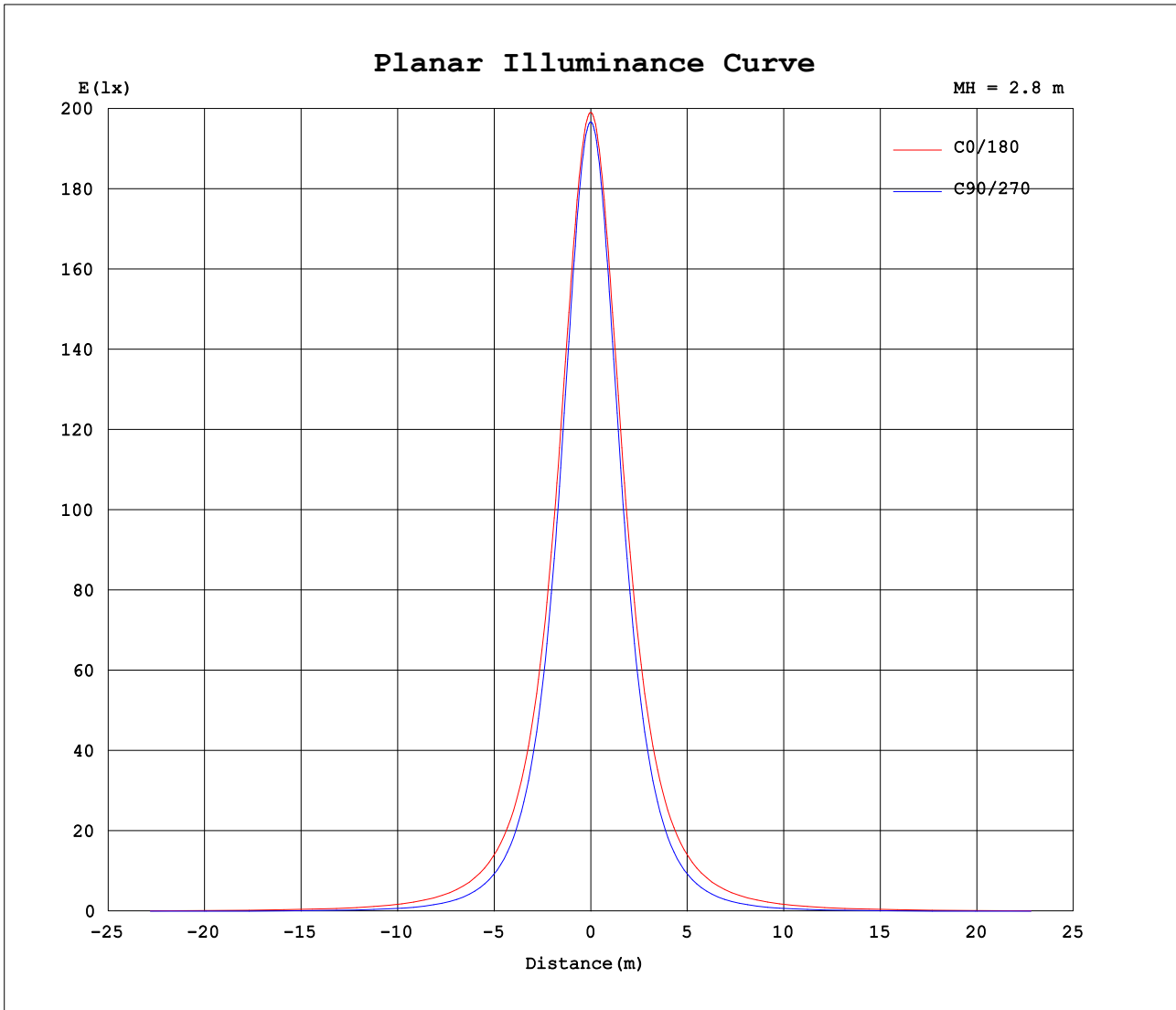
AvgL	cd/m2
L_0~180 (65) av	21674
L_0~180 (75) av	27891
L_0~180 (85) av	63323
L_90~270 (65) av	13155
L_90~270 (75) av	11064
L_90~270 (85) av	6869
L_45 (65) av	18130
L_45 (75) av	21438
L_45 (85) av	42745

Standard: GB/T 29293-2012

C Range: 0 - 360DEG
 C Interval: 15.0DEG
 Test Speed: HIGH
 Temperature:25.3DEG
 Operators:QC
 Test Date:2021-11-22

γ Range: 0 - 180DEG
 γ Interval: 1.0DEG
 Test System:EVERFINE GO-2000A_V1 SYSTEM V2.0.362
 Humidity:53.0%
 Test Distance:10.530m [K=1.0000]
 Remarks:

Planar Illuminance Curve



C Range: 0 - 360DEG
 C Interval: 15.0DEG
 Test Speed: HIGH
 Temperature:25.3DEG
 Operators:QC
 Test Date:2021-11-22

γ Range: 0 - 180DEG
 γ Interval: 1.0DEG
 Test System:EVERFINE GO-2000A_V1 SYSTEM V2.0.362
 Humidity:53.0%
 Test Distance:10.530m [K=1.0000]
 Remarks:

LUMINOUS DISTRIBUTION INTENSITY DATA

Table--1

UNIT: cd

C (DEG) γ (DEG)	0	15	30	45	60	75	90	105	120	135	150	165	180	195	210	225	240	255	270
0	1544	1544	1544	1544	1544	1544	1544	1544	1544	1544	1544	1544	1544	1544	1544	1544	1544	1544	1544
5	1539	1539	1539	1538	1537	1537	1537	1537	1537	1538	1539	1539	1539	1539	1539	1538	1537	1537	1537
10	1524	1524	1522	1519	1516	1514	1513	1514	1516	1519	1522	1524	1524	1524	1522	1519	1516	1514	1513
15	1500	1498	1494	1488	1481	1477	1475	1477	1481	1488	1494	1498	1500	1498	1494	1488	1481	1477	1475
20	1467	1464	1456	1445	1434	1426	1423	1426	1434	1445	1456	1464	1467	1464	1456	1445	1434	1426	1423
25	1427	1423	1410	1392	1375	1362	1357	1362	1375	1392	1410	1423	1427	1423	1410	1392	1375	1362	1357
30	1379	1373	1355	1330	1305	1287	1281	1287	1305	1330	1355	1373	1379	1373	1355	1330	1305	1287	1281
35	1323	1315	1293	1260	1227	1202	1194	1202	1227	1260	1293	1315	1323	1315	1293	1260	1227	1202	1194
40	1260	1250	1223	1183	1141	1109	1097	1109	1141	1183	1223	1250	1260	1250	1223	1183	1141	1109	1097
45	1190	1178	1146	1099	1048	1008	993	1008	1048	1099	1146	1178	1190	1178	1146	1099	1048	1008	993
50	1114	1101	1063	1010	950	901	882	901	950	1010	1063	1101	1114	1101	1063	1010	950	901	882
55	1033	1018	976	916	847	788	765	788	847	916	976	1018	1033	1018	976	916	847	788	765
60	948	932	886	818	741	673	644	673	741	818	886	932	948	932	886	818	741	673	644
65	859	841	792	719	634	557	522	557	634	719	792	841	859	841	792	719	634	557	522
70	768	749	697	619	527	437	393	437	527	619	697	749	768	749	697	619	527	437	393
75	677	658	603	520	421	321	269	321	421	520	603	658	677	658	603	520	421	321	269
80	593	572	515	428	323	216	151	216	323	428	515	572	593	572	515	428	323	216	151
85	518	497	439	349	240	126	56.2	126	240	349	439	497	518	497	439	349	240	126	56.2
90	453	432	376	290	183	72.3	5.85	72.3	183	290	376	432	453	432	376	290	183	72.3	5.85
95	398	379	326	247	150	54.7	8.36	54.7	150	247	326	379	398	379	326	247	150	54.7	8.36
100	355	338	290	217	129	45.5	8.55	45.5	129	217	290	338	355	338	290	217	129	45.5	8.55
105	319	304	260	192	112	40.9	7.99	40.9	112	192	260	304	319	304	260	192	112	40.9	7.99
110	287	272	231	170	98.9	37.7	9.35	37.7	98.9	170	231	272	287	272	231	170	98.9	37.7	9.35
115	256	242	205	149	85.6	35.1	11.2	35.1	85.6	149	205	242	256	242	205	149	85.6	35.1	11.2
120	226	215	182	128	76.0	33.5	13.0	33.5	76.0	128	182	215	226	215	182	128	76.0	33.5	13.0
125	199	189	159	111	68.0	32.9	14.9	32.9	68.0	111	159	189	199	189	159	111	68.0	32.9	14.9
130	175	165	135	96.6	61.3	32.3	16.8	32.3	61.3	96.6	135	165	175	165	135	96.6	61.3	32.3	16.8
135	152	144	114	84.9	55.9	31.9	18.7	31.9	55.9	84.9	114	144	152	144	114	84.9	55.9	31.9	18.7
140	131	125	96.9	74.4	51.1	32.0	21.2	32.0	51.1	74.4	96.9	125	131	125	96.9	74.4	51.1	32.0	21.2
145	112	105	84.0	65.4	48.0	32.9	24.0	32.9	48.0	65.4	84.0	105	112	105	84.0	65.4	48.0	32.9	24.0
150	95.1	84.0	72.1	58.0	45.1	33.4	26.6	33.4	45.1	58.0	72.1	84.0	95.1	84.0	72.1	58.0	45.1	33.4	26.6
155	79.7	68.1	61.1	52.3	42.1	33.4	29.1	33.4	42.1	52.3	61.1	68.1	79.7	68.1	61.1	52.3	42.1	33.4	29.1
160	65.9	56.4	51.7	46.5	40.6	33.6	31.4	33.6	40.6	46.5	51.7	56.4	65.9	56.4	51.7	46.5	40.6	33.6	31.4
165	52.1	45.9	44.3	42.3	38.2	34.4	33.2	34.4	38.2	42.3	44.3	45.9	52.1	45.9	44.3	42.3	38.2	34.4	33.2
170	41.9	38.9	39.6	38.0	36.0	35.5	34.7	35.5	36.0	38.0	39.6	38.9	41.9	38.9	39.6	38.0	36.0	35.5	34.7
175	31.1	33.5	35.6	36.4	36.7	36.2	35.9	36.2	36.7	36.4	35.6	33.5	31.1	33.5	35.6	36.4	36.7	36.2	35.9
180	25.7	34.6	36.0	36.3	36.8	36.9	36.7	36.9	36.8	36.3	36.0	34.6	25.7	34.6	36.0	36.3	36.8	36.9	36.7

C Range: 0 - 360DEG
 C Interval: 15.0DEG
 Test Speed: HIGH
 Temperature:25.3DEG
 Operators:QC
 Test Date:2021-11-22

γ Range: 0 - 180DEG
 γ Interval: 1.0DEG
 Test System:EVERFINE GO-2000A_V1 SYSTEM V2.0.362
 Humidity:53.0%
 Test Distance:10.530m [K=1.0000]
 Remarks:

LUMINOUS DISTRIBUTION INTENSITY DATA

Table--2

UNIT: cd

C (DEG) γ (DEG)	285	300	315	330	345															
0	1544	1544	1544	1544	1544															
5	1537	1537	1538	1539	1539															
10	1514	1516	1519	1522	1524															
15	1477	1481	1488	1494	1498															
20	1426	1434	1445	1456	1464															
25	1362	1375	1392	1410	1423															
30	1287	1305	1330	1355	1373															
35	1202	1227	1260	1293	1315															
40	1109	1141	1183	1223	1250															
45	1008	1048	1099	1146	1178															
50	901	950	1010	1063	1101															
55	788	847	916	976	1018															
60	673	741	818	886	932															
65	557	634	719	792	841															
70	437	527	619	697	749															
75	321	421	520	603	658															
80	216	323	428	515	572															
85	126	240	349	439	497															
90	72.3	183	290	376	432															
95	54.7	150	247	326	379															
100	45.5	129	217	290	338															
105	40.9	112	192	260	304															
110	37.7	98.9	170	231	272															
115	35.1	85.6	149	205	242															
120	33.5	76.0	128	182	215															
125	32.9	68.0	111	159	189															
130	32.3	61.3	96.6	135	165															
135	31.9	55.9	84.9	114	144															
140	32.0	51.1	74.4	96.9	125															
145	32.9	48.0	65.4	84.0	105															
150	33.4	45.1	58.0	72.1	84.0															
155	33.4	42.1	52.3	61.1	68.1															
160	33.6	40.6	46.5	51.7	56.4															
165	34.4	38.2	42.3	44.3	45.9															
170	35.5	36.0	38.0	39.6	38.9															
175	36.2	36.7	36.4	35.6	33.5															
180	36.9	36.8	36.3	36.0	34.6															

C Range: 0 - 360DEG
 C Interval: 15.0DEG
 Test Speed: HIGH
 Temperature:25.3DEG
 Operators:QC
 Test Date:2021-11-22

γ Range: 0 - 180DEG
 γ Interval: 1.0DEG
 Test System:EVERFINE GO-2000A_V1 SYSTEM V2.0.362
 Humidity:53.0%
 Test Distance:10.530m [K=1.0000]
 Remarks:

Photometric Data Table [cd]

G/C	0.0	15.0	30.0	45.0	60.0	75.0	90.0	105.0	120.0	135.0
0.0	1544	1544	1544	1544	1544	1544	1544	1544	1544	1544
3.0	1543	1542	1542	1542	1542	1542	1542	1542	1542	1542
6.0	1537	1537	1536	1535	1534	1533	1533	1533	1534	1535
9.0	1528	1528	1526	1524	1521	1520	1519	1520	1521	1524
12.0	1516	1515	1512	1508	1504	1501	1500	1501	1504	1508
15.0	1500	1498	1494	1488	1481	1477	1475	1477	1481	1488
18.0	1482	1479	1473	1463	1454	1448	1445	1448	1454	1463
21.0	1460	1457	1448	1435	1423	1414	1411	1414	1423	1435
24.0	1436	1432	1420	1403	1387	1376	1371	1376	1387	1403
27.0	1409	1404	1389	1368	1348	1333	1328	1333	1348	1368
30.0	1379	1373	1355	1330	1305	1287	1281	1287	1305	1330
33.0	1347	1339	1319	1289	1259	1237	1229	1237	1259	1289
36.0	1311	1303	1279	1245	1210	1184	1175	1184	1210	1245
39.0	1273	1264	1237	1199	1158	1128	1117	1128	1158	1199
42.0	1233	1222	1193	1150	1104	1069	1056	1069	1104	1150
45.0	1190	1178	1146	1099	1048	1008	993.1	1008	1048	1099
48.0	1145	1133	1097	1046	989.8	944.2	927.3	944.2	989.8	1046
51.0	1099	1085	1046	991.0	929.6	878.6	859.2	878.6	929.6	991.0
54.0	1050	1035	994.3	934.8	868.2	811.3	789.2	811.3	868.2	934.8
57.0	999.8	984.1	940.7	877.0	805.3	742.4	717.5	742.4	805.3	877.0
60.0	948.2	931.6	885.6	818.2	741.5	672.6	643.9	672.6	741.5	818.2
63.0	895.0	877.9	829.6	758.7	676.8	602.0	570.4	602.0	676.8	758.7
66.0	841.0	823.1	773.0	698.7	612.5	532.8	496.2	532.8	612.5	698.7
69.0	786.1	767.5	715.9	638.7	548.4	460.6	418.7	460.6	548.4	638.7
72.0	731.1	712.0	658.8	579.0	484.4	389.7	342.0	389.7	484.4	579.0
75.0	677.1	657.6	602.7	520.5	421.4	321.4	268.6	321.4	421.4	520.5
78.0	625.4	605.3	549.1	464.0	361.2	256.8	196.5	256.8	361.2	464.0
81.0	576.8	556.5	499.1	410.4	304.6	196.3	130.3	196.3	304.6	410.4
84.0	532.0	511.4	453.1	363.5	254.8	142.2	72.74	142.2	254.8	363.5
87.0	490.6	470.2	412.3	323.6	214.2	98.38	29.31	98.38	214.2	323.6
90.0	452.7	432.3	375.6	289.9	183.4	72.29	5.853	72.29	183.4	289.9
93.0	419.2	398.4	344.4	262.1	161.3	59.85	6.729	59.85	161.3	262.1
96.0	387.9	369.8	318.3	240.0	145.6	52.44	8.560	52.44	145.6	240.0
99.0	362.5	345.1	296.4	222.1	133.2	47.10	8.523	47.10	133.2	222.1
102.0	339.9	323.6	277.3	206.2	122.3	43.27	8.562	43.27	122.3	206.2
105.0	319.5	303.8	259.6	191.9	112.4	40.88	7.993	40.88	112.4	191.9
108.0	299.5	284.7	242.6	178.0	104.0	39.02	8.662	39.02	104.0	178.0
111.0	280.3	266.2	226.1	165.7	96.16	37.09	9.695	37.09	96.16	165.7
114.0	261.7	248.3	210.4	153.5	88.15	35.49	10.78	35.49	88.15	153.5
117.0	243.4	231.0	195.4	140.7	81.37	34.32	11.89	34.32	81.37	140.7
120.0	226.0	214.9	181.8	128.0	75.97	33.52	13.01	33.52	75.97	128.0
123.0	209.6	199.1	168.4	117.3	71.03	33.05	14.16	33.05	71.03	117.3
126.0	194.2	184.2	154.2	107.4	66.53	32.70	15.33	32.70	66.53	107.4
129.0	179.4	170.0	140.0	99.10	62.54	32.35	16.46	32.35	62.54	99.10
132.0	165.3	157.0	125.9	91.65	59.08	32.07	17.57	32.07	59.08	91.65
135.0	152.0	144.4	114.2	84.92	55.89	31.90	18.65	31.90	55.89	84.92
138.0	139.3	132.4	103.2	78.11	52.98	31.71	20.13	31.71	52.98	78.11
141.0	127.3	120.5	94.02	72.54	50.42	32.21	21.76	32.21	50.42	72.54
144.0	115.9	109.6	86.26	67.14	48.60	32.81	23.40	32.81	48.60	67.14
147.0	105.2	96.65	78.76	62.12	46.85	33.15	25.04	33.15	46.85	62.12
150.0	95.09	83.99	72.10	58.04	45.09	33.43	26.61	33.43	45.09	58.04
153.0	85.68	73.57	65.35	54.60	43.31	33.44	28.14	33.44	43.31	54.60
156.0	76.86	65.65	59.09	51.07	41.67	33.45	29.57	33.45	41.67	51.07
159.0	68.48	58.60	53.40	47.63	41.01	33.54	30.95	33.54	41.01	47.63
162.0	60.76	51.93	48.57	44.32	39.71	33.73	32.16	33.73	39.71	44.32
165.0	52.11	45.93	44.34	42.34	38.20	34.44	33.21	34.44	38.20	42.34
168.0	45.83	41.67	41.49	39.92	36.69	35.24	34.12	35.24	36.69	39.92
171.0	40.70	37.63	38.48	37.22	35.92	35.63	34.96	35.63	35.92	37.22
174.0	32.34	33.97	35.78	35.93	36.70	36.09	35.71	36.09	36.70	35.93
177.0	26.61	34.22	36.00	36.42	36.66	36.49	36.29	36.49	36.66	36.42
180.0	25.73	34.57	35.96	36.34	36.82	36.85	36.72	36.85	36.82	36.34
G/C	150.0	165.0	180.0	195.0	210.0	225.0	240.0	255.0	270.0	285.0
0.0	1544	1544	1544	1544	1544	1544	1544	1544	1544	1544
3.0	1542	1542	1543	1542	1542	1542	1542	1542	1542	1542
6.0	1536	1537	1537	1537	1536	1535	1534	1533	1533	1533
9.0	1526	1528	1528	1528	1526	1524	1521	1520	1519	1520
12.0	1512	1515	1516	1515	1512	1508	1504	1501	1500	1501
15.0	1494	1498	1500	1498	1494	1488	1481	1477	1475	1477
18.0	1473	1479	1482	1479	1473	1463	1454	1448	1445	1448
21.0	1448	1457	1460	1457	1448	1435	1423	1414	1411	1414
24.0	1420	1432	1436	1432	1420	1403	1387	1376	1371	1376
27.0	1389	1404	1409	1404	1389	1368	1348	1333	1328	1333
30.0	1355	1373	1379	1373	1355	1330	1305	1287	1281	1287

C Range: 0 - 360DEG
 C Interval: 15.0DEG
 Test Speed: HIGH
 Temperature: 25.3DEG
 Operators: QC
 Test Date: 2021-11-22

v Range: 0 - 180DEG
 v Interval: 1.0DEG
 Test System: EVERFINE GO-2000A_V1 SYSTEM V2.0.362
 Humidity: 53.0%
 Test Distance: 10.530m [K=1.0000]
 Remarks:

Photometric Data Table [cd]

33.0	1319	1339	1347	1339	1319	1289	1259	1237	1229	1237
36.0	1279	1303	1311	1303	1279	1245	1210	1184	1175	1184
39.0	1237	1264	1273	1264	1237	1199	1158	1128	1117	1128
42.0	1193	1222	1233	1222	1193	1150	1104	1069	1056	1069
45.0	1146	1178	1190	1178	1146	1099	1048	1008	993.1	1008
48.0	1097	1133	1145	1133	1097	1046	989.8	944.2	927.3	944.2
51.0	1046	1085	1099	1085	1046	991.0	929.6	878.6	859.2	878.6
54.0	994.3	1035	1050	1035	994.3	934.8	868.2	811.3	789.2	811.3
57.0	940.7	984.1	999.8	984.1	940.7	877.0	805.3	742.4	717.5	742.4
60.0	885.6	931.6	948.2	931.6	885.6	818.2	741.5	672.6	643.9	672.6
63.0	829.6	877.9	895.0	877.9	829.6	758.7	676.8	602.0	570.4	602.0
66.0	773.0	823.1	841.0	823.1	773.0	698.7	612.5	532.8	496.2	532.8
69.0	715.9	767.5	786.1	767.5	715.9	638.7	548.4	460.6	418.7	460.6
72.0	658.8	712.0	731.1	712.0	658.8	579.0	484.4	389.7	342.0	389.7
75.0	602.7	657.6	677.1	657.6	602.7	520.5	421.4	321.4	268.6	321.4
78.0	549.1	605.3	625.4	605.3	549.1	464.0	361.2	256.8	196.5	256.8
81.0	499.1	556.5	576.8	556.5	499.1	410.4	304.6	196.3	130.3	196.3
84.0	453.1	511.4	532.0	511.4	453.1	363.5	254.8	142.2	72.74	142.2
87.0	412.3	470.2	490.6	470.2	412.3	323.6	214.2	98.38	29.31	98.38
90.0	375.6	432.3	452.7	432.3	375.6	289.9	183.4	72.29	5.853	72.29
93.0	344.4	398.4	419.2	398.4	344.4	262.1	161.3	59.85	6.729	59.85
96.0	318.3	369.8	387.9	369.8	318.3	240.0	145.6	52.44	8.560	52.44
99.0	296.4	345.1	362.5	345.1	296.4	222.1	133.2	47.10	8.523	47.10
102.0	277.3	323.6	339.9	323.6	277.3	206.2	122.3	43.27	8.562	43.27
105.0	259.6	303.8	319.5	303.8	259.6	191.9	112.4	40.88	7.993	40.88
108.0	242.6	284.7	299.5	284.7	242.6	178.0	104.0	39.02	8.662	39.02
111.0	226.1	266.2	280.3	266.2	226.1	165.7	96.16	37.09	9.695	37.09
114.0	210.4	248.3	261.7	248.3	210.4	153.5	88.15	35.49	10.78	35.49
117.0	195.4	231.0	243.4	231.0	195.4	140.7	81.37	34.32	11.89	34.32
120.0	181.8	214.9	226.0	214.9	181.8	128.0	75.97	33.52	13.01	33.52
123.0	168.4	199.1	209.6	199.1	168.4	117.3	71.03	33.05	14.16	33.05
126.0	154.2	184.2	194.2	184.2	154.2	107.4	66.53	32.70	15.33	32.70
129.0	140.0	170.0	179.4	170.0	140.0	99.10	62.54	32.35	16.46	32.35
132.0	125.9	157.0	165.3	157.0	125.9	91.65	59.08	32.07	17.57	32.07
135.0	114.2	144.4	152.0	144.4	114.2	84.92	55.89	31.90	18.65	31.90
138.0	103.2	132.4	139.3	132.4	103.2	78.11	52.98	31.71	20.13	31.71
141.0	94.02	120.5	127.3	120.5	94.02	72.54	50.42	32.21	21.76	32.21
144.0	86.26	109.6	115.9	109.6	86.26	67.14	48.60	32.81	23.40	32.81
147.0	78.76	96.65	105.2	96.65	78.76	62.12	46.85	33.15	25.04	33.15
150.0	72.10	83.99	95.09	83.99	72.10	58.04	45.09	33.43	26.61	33.43
153.0	65.35	73.57	85.68	73.57	65.35	54.60	43.31	33.44	28.14	33.44
156.0	59.09	65.65	76.86	65.65	59.09	51.07	41.67	33.45	29.57	33.45
159.0	53.40	58.60	68.48	58.60	53.40	47.63	41.01	33.54	30.95	33.54
162.0	48.57	51.93	60.76	51.93	48.57	44.32	39.71	33.73	32.16	33.73
165.0	44.34	45.93	52.11	45.93	44.34	42.34	38.20	34.44	33.21	34.44
168.0	41.49	41.67	45.83	41.67	41.49	39.92	36.69	35.24	34.12	35.24
171.0	38.48	37.63	40.70	37.63	38.48	37.22	35.92	35.63	34.96	35.63
174.0	35.78	33.97	32.34	33.97	35.78	35.93	36.70	36.09	35.71	36.09
177.0	36.00	34.22	26.61	34.22	36.00	36.42	36.66	36.49	36.29	36.49
180.0	35.96	34.57	25.73	34.57	35.96	36.34	36.82	36.85	36.72	36.85
G/C	300.0	315.0	330.0	345.0						
0.0	1544	1544	1544	1544						
3.0	1542	1542	1542	1542						
6.0	1534	1535	1536	1537						
9.0	1521	1524	1526	1528						
12.0	1504	1508	1512	1515						
15.0	1481	1488	1494	1498						
18.0	1454	1463	1473	1479						
21.0	1423	1435	1448	1457						
24.0	1387	1403	1420	1432						
27.0	1348	1368	1389	1404						
30.0	1305	1330	1355	1373						
33.0	1259	1289	1319	1339						
36.0	1210	1245	1279	1303						
39.0	1158	1199	1237	1264						
42.0	1104	1150	1193	1222						
45.0	1048	1099	1146	1178						
48.0	989.8	1046	1097	1133						
51.0	929.6	991.0	1046	1085						
54.0	868.2	934.8	994.3	1035						
57.0	805.3	877.0	940.7	984.1						
60.0	741.5	818.2	885.6	931.6						
63.0	676.8	758.7	829.6	877.9						
66.0	612.5	698.7	773.0	823.1						

C Range: 0 - 360DEG
 C Interval: 15.0DEG
 Test Speed: HIGH
 Temperature:25.3DEG
 Operators:QC
 Test Date:2021-11-22

γ Range: 0 - 180DEG
 γ Interval: 1.0DEG
 Test System:EVERFINE GO-2000A_V1 SYSTEM V2.0.362
 Humidity:53.0%
 Test Distance:10.530m [K=1.0000]
 Remarks:

Photometric Data Table [cd]

69.0	548.4	638.7	715.9	767.5
72.0	484.4	579.0	658.8	712.0
75.0	421.4	520.5	602.7	657.6
78.0	361.2	464.0	549.1	605.3
81.0	304.6	410.4	499.1	556.5
84.0	254.8	363.5	453.1	511.4
87.0	214.2	323.6	412.3	470.2
90.0	183.4	289.9	375.6	432.3
93.0	161.3	262.1	344.4	398.4
96.0	145.6	240.0	318.3	369.8
99.0	133.2	222.1	296.4	345.1
102.0	122.3	206.2	277.3	323.6
105.0	112.4	191.9	259.6	303.8
108.0	104.0	178.0	242.6	284.7
111.0	96.16	165.7	226.1	266.2
114.0	88.15	153.5	210.4	248.3
117.0	81.37	140.7	195.4	231.0
120.0	75.97	128.0	181.8	214.9
123.0	71.03	117.3	168.4	199.1
126.0	66.53	107.4	154.2	184.2
129.0	62.54	99.10	140.0	170.0
132.0	59.08	91.65	125.9	157.0
135.0	55.89	84.92	114.2	144.4
138.0	52.98	78.11	103.2	132.4
141.0	50.42	72.54	94.02	120.5
144.0	48.60	67.14	86.26	109.6
147.0	46.85	62.12	78.76	96.65
150.0	45.09	58.04	72.10	83.99
153.0	43.31	54.60	65.35	73.57
156.0	41.67	51.07	59.09	65.65
159.0	41.01	47.63	53.40	58.60
162.0	39.71	44.32	48.57	51.93
165.0	38.20	42.34	44.34	45.93
168.0	36.69	39.92	41.49	41.67
171.0	35.92	37.22	38.48	37.63
174.0	36.70	35.93	35.78	33.97
177.0	36.66	36.42	36.00	34.22
180.0	36.82	36.34	35.96	34.57

C Range: 0 - 360DEG
 C Interval: 15.0DEG
 Test Speed: HIGH
 Temperature:25.3DEG
 Operators:QC
 Test Date:2021-11-22

γ Range: 0 - 180DEG
 γ Interval: 1.0DEG
 Test System:EVERFINE GO-2000A_V1 SYSTEM V2.0.362
 Humidity:53.0%
 Test Distance:10.530m [K=1.0000]
 Remarks: